

Product datasheet for **RG237245**

ZDHHC20 (NM_001286638) Human Tagged ORF Clone

Product data:

Product Type:	Expression Plasmids
Product Name:	ZDHHC20 (NM_001286638) Human Tagged ORF Clone
Tag:	TurboGFP
Symbol:	ZDHHC20
Synonyms:	4933421L13Rik; DHHC-20; DHHC20
Mammalian Cell Selection:	Neomycin
Vector:	pCMV6-AC-GFP (PS100010)
E. coli Selection:	Ampicillin (100 ug/mL)
ORF Nucleotide Sequence:	>RG237245 representing NM_001286638. Blue=ORF Red=Cloning site Green=Tag(s)

```
GCTCGTTTAGTGAACCGTCAGAATTTTGTAAACGACTCACTATAGGGCGCCGGGAATTCGTCGACTG
GATCCGGTACCGAGGAGATCTGCCGCCGCGATCGCC
ATGTTTGTATGGTCCTATTGGATGACAATTTTCACATCTCCCGCTTCCCCTCCAAGAGTTCTACTTG
TCCAATTCTGAAAAGGAACGTTATGAAAAAGAATTCAGCCAAGAAAGACAACAAGAAATTTGAGAAGA
GCAGCAAGAGCTTACCTATCTATACCACATCAGCTTCAAAAATCAGATATTGTAAAAATGTCAG
CTGATTAACCTGATCGGGCGCATCACTGCTCAGCCTGTGACTCATGTATTCTTAAGATGGATCATCAC
TGTCCTTGGGTGAATAACTGTGTGGGATTTTCTAATTACAAATCTTCTGCTGTTTTTATTGTATTCC
CTATTATATTGCCTTTTCTGGCTGCAACAGTTTTAGAGTACTTTATAAAATTTGGACGAATGAACGTG
ACAGATACACGTGCAAAATTCACGTACTTTTTCTTTCTTTGTGTCTGCAATGTTCTTCATCAGGGTC
CTCTCACTTTTACGTACCACTGCTGGCTAGTTGGAAAAATAGAACAACAATAGAATCATTCCGCGCA
CCCACGTTTTCATACGGACCTGATGAAATGGTTTCTCTTTGGATGCAGTAAAAATGGAGACAAGTC
TTTGGTATGAAAAGAAATATTGGCTACTTCCAATATTTCAAGCTTGGGTGATGGTTGCAGTTTTCCA
ACTCGCCTTGTGGGATGGATCCAGAACAAGCTTCTGTTACAACCAGAATGAGTATGCCAGAAGTAGT
GGCTCAAATCAACCTTTTCTATCAAACCACTTAGTGAATCAAAAACCGCTTGTGGACAGTGAATCT
CAGTGGCTGGAGAATGGAGCTGAAGAAGGCATCGTCAAATCAGGTGTA
ACGCGTACGCGGCCGCTCGAG - GFP Tag - GTTTAAAC
```



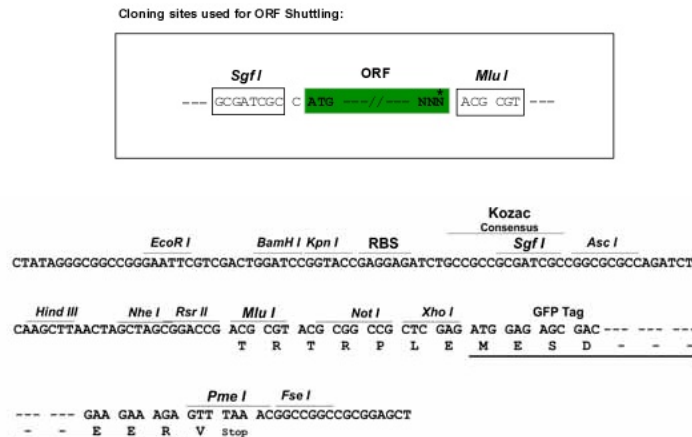
[View online »](#)

Protein Sequence: >Peptide sequence encoded by RG237245
 Blue=ORF Red=Cloning site Green=Tag(s)

MFVWSYWMTIFTSPASPSKEFYLSNSEKERYEKEFSQERQQEILRRAARALPIYTTSASKTIRYCEKQ
 LIKPDRAHHCSACDSCILKMDHHCWPVNNCVGFSNYKFFLLFLLYSLLYCLFVAATVLEYFIKFTNEL
 TDTRAKFHVLFVFFVSAMFFISVLSLFSYHCWLVGKNRRTTIESFRAPTFSYGPDGNFSLGC SKNWRQV
 FGDEKKYWLLPIFSSLGDGCSFPTRLVGMDEQASVTNQNEYARSSGNSQFPFIKPLSESKNRLDSES
 QWLENGAEEGIVKSGV
 TRTRPLEMESDESGLPAMEIECRITGTLNGVEFELVGGGEGTPEQGRMTNKMSTKGALTFSPYLLSHV
 MGYGFYHFGTYPSTYENPFLHAINNGGYTNTRIEKYEDGGVLHVSFSYRYEAGRVIGDFKVMGTGFPED
 SVIFTDKIIRS NATVEHLHPMGDNDLDGSFTRTFSLRDGGYSSVVD SHMHFKSAIHPSILQNGGPMFA
 FRRVEEDHSNTELGIVEYQHAFKTPDADAGEERV

Restriction Sites: SgfI-MluI

Cloning Scheme:



ACCN: NM_001286638

ORF Size: 876 bp

OTI Disclaimer: The molecular sequence of this clone aligns with the gene accession number as a point of reference only. However, individual transcript sequences of the same gene can differ through naturally occurring variations (e.g. polymorphisms), each with its own valid existence. This clone is substantially in agreement with the reference, but a complete review of all prevailing variants is recommended prior to use. [More info](#)

OTI Annotation: This clone was engineered to express the complete ORF with an expression tag. Expression varies depending on the nature of the gene.

Components: The ORF clone is ion-exchange column purified and shipped in a 2D barcoded Matrix tube containing 10ug of transfection-ready, dried plasmid DNA (reconstitute with 100 ul of water).

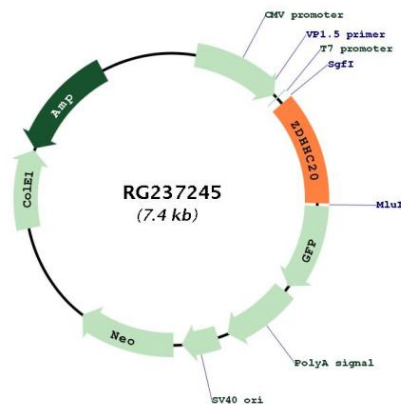
RefSeq: [NM_001286638.1](#), [NP_001273567.1](#)

RefSeq Size: 5333 bp

RefSeq ORF: 879 bp

Locus ID:	253832
UniProt ID:	Q5W0Z9
Cytogenetics:	13q12.11
Protein Families:	Transmembrane
MW:	34.2 kDa
Gene Summary:	Catalyzes palmitoylation of Cys residues on target proteins (PubMed:27153536, PubMed:29326245). Catalyzes palmitoylation of Cys residues in the cytoplasmic C-terminus of EGFR, and modulates the duration of EGFR signaling by modulating palmitoylation-dependent EGFR internalization and degradation (PubMed:27153536). Has a preference for acyl-CoA with C16 fatty acid chains (PubMed:29326245). Can also utilize acyl-CoA with C14 and C18 fatty acid chains (PubMed:29326245).[UniProtKB/Swiss-Prot Function]

Product images:



Circular map for RG237245