

Product datasheet for **RG237228**

TMPRSS4 (NM_001290096) Human Tagged ORF Clone

Product data:

Product Type:	Expression Plasmids
Product Name:	TMPRSS4 (NM_001290096) Human Tagged ORF Clone
Tag:	TurboGFP
Symbol:	TMPRSS4
Synonyms:	CAP2; CAPH2; MT-SP2; TMPRSS3
Mammalian Cell Selection:	Neomycin
Vector:	pCMV6-AC-GFP (PS100010)
E. coli Selection:	Ampicillin (100 ug/mL)
ORF Nucleotide Sequence:	>RG237228 representing NM_001290096. Blue=ORF Red=Cloning site Green=Tag(s)

```
GCTCGTTTAGTGAACCGTCAGAATTTTGTAAACGACTCACTATAGGGCGCCGGGAATTCGTCGACTG
GATCCGGTACCGAGGAGATCTGCCGCCGCGATCGCC
ATGGGCTACAGCAGAGCTGTGGAGATTGGCCAGACCAGGATCTGGATGTTGTTGAAATCACAGAAAAC
AGCCAGGAGCTTCGCATGCGGAACTCAAGTGGGCCCTGTCTCTCAGGCTCCCTGGTCTCCCTGCACTGT
CTTGCCCTGTGGGAAGAGCCTGAAGACCCCGTGTGGTGGGTGGGGAGGAGGCCTCTGTGGATTCTTGG
CCTTGGCAGGTCAGCATCCAGTACGACAAACAGCACGTCTGTGGAGGGAGCATCCTGGACCCCACTGG
GTCCTCACGGCAGCCCACTGCTTCAGGAAACATACCGATGTGTTCAACTGGAAGGTGCGGGCAGGCTCA
GACAAACTGGGCAGCTTCCCATCCCTGGCTGTGGCCAAGATCATCATCATTGAATTCAACCCCATGTAC
CCCAAAGACAATGACATCGCCCTCATGAAGCTGCAGTTCCCACTCACTTTCTCAGGCACAGTCAGGCC
ATCTGTCTGCCCTTCTTTGATGAGGAGCTCACTCCAGCCACCCCACTCTGGATCATTGGATGGGGCTTT
ACGAAGCAGAAATGGAGGGAAGATGTCTGACATACTGCTGCAGGCGTCAGTCCAGGTCAATTGACAGACA
CGGTGCAATGCAGACGATGCGTACCAGGGGGAAGTCACCGAGAAGATGATGTGTGCAGGCATCCCGGAA
GGGGGTGTGGACACCTGCCAGGGTACAGTGGTGGGCCCTGATGTACCAATCTGACCAGTGGCATGTG
GTGGGCATCGTTAGTTGGGGCTATGGCTGCGGGGGCCGAGCACCCAGGAGTATACACCAAGGTCTCA
GCCTATCTCAACTGGATCTACAATGTCTGGAAGGCTGAGCTG
ACGCGTACGCGGCCGCTCGAG - GFP Tag - GTTTAAAC
```



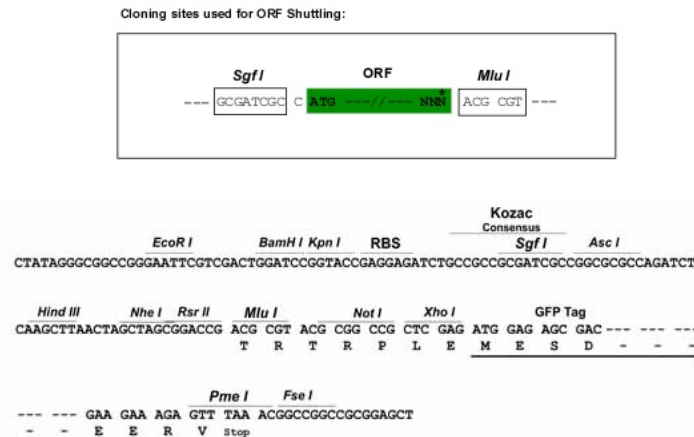
[View online »](#)

Protein Sequence: >Peptide sequence encoded by RG237228
 Blue=ORF Red=Cloning site Green=Tag(s)

MGYSRAVEIGPDQDLDVVEITENSQELMRNSSGPCLSGSLVSLHCLACGKSLKTPRVVGGEEASVDSW
 PWQVSIQYDKQHVCVGGSSILDPHWLTAHCFRKHTDVFNWKVRAGSDKLGSPSLAVAKIIIEFNPMY
 PKDNDIALMKLQFPLTFSGTVRPICLPFFDEELTPATPLWIIIGWFTKQNGGKMSDILLQASVQVIDST
 RCNADDA YQGEVTEKMM CAGIPEGGVDT CQGDSSGGLMYQSDQWHVVGIVSWGYCGGPGSTPGVYTKVS
 AYLNWIYNVWKAEL
 TRTRPLEMESDESGLPAMEIECRITGTLNGVEFELVGGEGTPEQGRMTNKMKSTKGALTFSPYLLSHV
 MGYGFYHFGTYPSTYENPFLHAINNGGYNTRIEKYEDGGVLHVSFSYRYEAGRVIGDFKVMGTGFPED
 SVIFTDKIIRSNATVEHLHPMGDNDLDGSFTRTFSLRDGGYSSVVD SHMHFKSAIHPSILQNGGPMFA
 FRRVEEDHSNTELGIVEYQHAFKTPDADAGEERV

Restriction Sites: SgfI-MluI

Cloning Scheme:



ACCN: NM_001290096

ORF Size: 870 bp

OTI Disclaimer: The molecular sequence of this clone aligns with the gene accession number as a point of reference only. However, individual transcript sequences of the same gene can differ through naturally occurring variations (e.g. polymorphisms), each with its own valid existence. This clone is substantially in agreement with the reference, but a complete review of all prevailing variants is recommended prior to use. [More info](#)

OTI Annotation: This clone was engineered to express the complete ORF with an expression tag. Expression varies depending on the nature of the gene.

Components: The ORF clone is ion-exchange column purified and shipped in a 2D barcoded Matrix tube containing 10ug of transfection-ready, dried plasmid DNA (reconstitute with 100 ul of water).

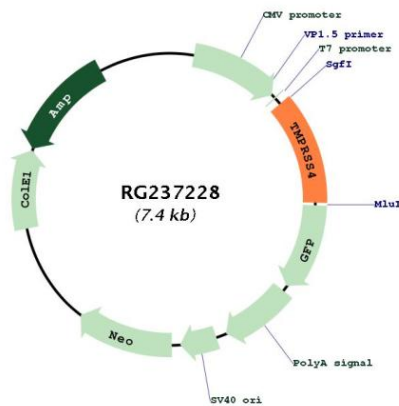
RefSeq: [NM_001290096.1](#), [NP_001277025.1](#)

RefSeq Size: 3464 bp

RefSeq ORF: 873 bp

Locus ID: 56649
Cytogenetics: 11q23.3
Protein Families: Druggable Genome, Protease, Transmembrane
MW: 32.3 kDa
Gene Summary: This gene encodes a member of the serine protease family. Serine proteases are known to be involved in a variety of biological processes, whose malfunction often leads to human diseases and disorders. This gene was identified as a gene overexpressed in pancreatic carcinoma. The encoded protein is membrane bound with a N-terminal anchor sequence and a glycosylated extracellular region containing the serine protease domain. Multiple transcript variants encoding different isoforms have been found for this gene. [provided by RefSeq, Jul 2008]

Product images:



Circular map for RG237228