

Product datasheet for **RG237222**

BOULE (BOLL) (NM_001284362) Human Tagged ORF Clone

Product data:

| | |
|---------------------------|--|
| Product Type: | Expression Plasmids |
| Product Name: | BOULE (BOLL) (NM_001284362) Human Tagged ORF Clone |
| Tag: | TurboGFP |
| Symbol: | BOULE |
| Synonyms: | BOULE |
| Mammalian Cell Selection: | Neomycin |
| Vector: | pCMV6-AC-GFP (PS100010) |
| E. coli Selection: | Ampicillin (100 ug/mL) |
| ORF Nucleotide Sequence: | >RG237222 representing NM_001284362. Blue=ORF Red=Cloning site Green=Tag(s) |

```
GCTCGTTTAGTGAACCGTCAGAATTTTGTAAATACGACTCACTATAGGGCGGCCGGGAATTCGTGCGACTG
GATCCGGTACCGAGGAGATCTGCCGCCGCGATCGCC
ATGCAAACATCAAACCAGATGCAAACAGATTCATTATCTCCATCCCCTAATCCTGTGTCACCTGTGCCT
TTGAATAACCCAACAAGTGCCCCAAGATATGGAACAGTGATCCCTAATCGCATCTTTGTAGGAGGAATT
GATTTTAAAGACAAACGAAAGTGATTTAAGAAAATTTTTTCCAGTATGGGTCTGTGAAAGAAGTGAAG
ATTGTAATGACAGAGCTGGAGTATCAAAGGGTATGGTTTCGTCACCTTTGAAACACAAGAAGATGCA
CAAAAAATTTTACAAGAGGCTGAAAACTTAATTATAAGGATAAGAAGCTGAACATTGGTCCAGCAATA
AGAAAACAACAAGTAGGGATCCCTCGTTCTAGTATAATGCCAGCAGCTGGAACAATGTATCTAACAAC
TCAACTGGATATCCTTATACTTACCATAATGGTGTGCTTATTTTCATACTCCAGAGGTAACCTTCGGTC
CCACCGCCTTGGCCTTACGTTCTGTATGTAGCTCCCCTGTGATGGTAGCTCAGCCATTATCAGCAA
CCTGCATATCACTACCAGGCCACCACACAGTATTTACCAGGACAGTGGCAGTGGAGTGTTCTCAGCCT
TCTGCCTCTTCTGCTCCATTCTTATACCTGCAACCTTCTGAGGTATTTATCAACCAGTGAAAATTGCA
CAGGATGGTGGATGTGTTCTCCTCCACTGTCTCTGATGGAACTTCAGTTCAGAGCCTTATTCTGAT
CATGGAGTTCAAGCAACATATCACCAGGTTTATGCTCCAAGTGCCATCACTATGCCTGCGCCTGTGATG
CAGCCTGAGCCAATTAACAGTGTGGAGCATTTCATTAT
ACGCGTACGCGGCCGCTCGAG - GFP Tag - GTTTAAAC
```



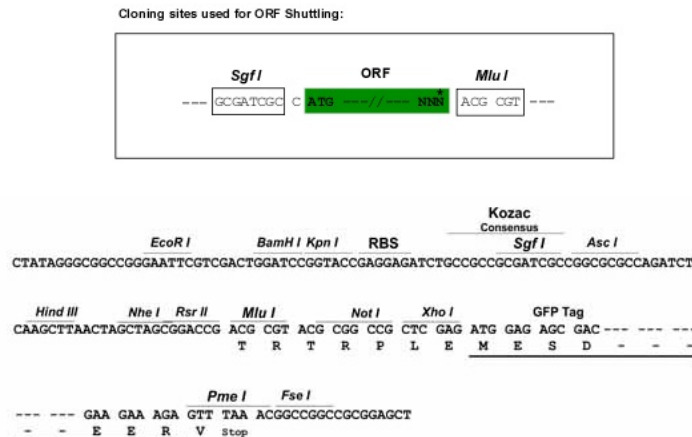
[View online »](#)

Protein Sequence: >Peptide sequence encoded by RG237222
 Blue=ORF Red=Cloning site Green=Tag(s)

MQTSNQMQTDLSPPSPNPVSPVPLNNPTSAPRYGTVIPNRI FVGGIDFKTNESDLRKFFSQYGSVKEVK
 IVNDRAGVSKGYGFVTFETQEDAQKILQEAELNYKDKKLNIGPAIRKQQVGI PRSSIMPAAGTMYLTT
 STGYPTYHNGVAYFHTPEVTSVPPPWPSSVCSPPMVAQPIYQQPAYHYQATTQYLPQQWQVSPQP
 SASSAPFLYLQPSEVIYQPVEIAQDGGCVPPPLSLMETSVPPEYSDHGVQATYHQVYAPSAITMPAPVM
 QPEPIKTVWSIHY
 TRTRPLEMESDESGLPAMEIECRITGTLNGVEFELVGGEGTPEQGRMTNKMSTKGALTFSPYLLSHV
 MGYGFYHFGTYPSTYENPFLHAINNGGYNTRIEKYEDGGVLHVSFSYRYEAGRVIGDFKVMGTGFPED
 SVIFTDKIIRSNATVEHLHPMGDNDLDGSFTRTFSLRDGGYSSVVD SHMHFKSAIHPSILQNGGPMFA
 FRRVEEDHSNTELGIVEYQHAFKTPDADAGEERV

Restriction Sites: SgfI-MluI

Cloning Scheme:



ACCN: NM_001284362

ORF Size: 867 bp

OTI Disclaimer: The molecular sequence of this clone aligns with the gene accession number as a point of reference only. However, individual transcript sequences of the same gene can differ through naturally occurring variations (e.g. polymorphisms), each with its own valid existence. This clone is substantially in agreement with the reference, but a complete review of all prevailing variants is recommended prior to use. [More info](#)

OTI Annotation: This clone was engineered to express the complete ORF with an expression tag. Expression varies depending on the nature of the gene.

Components: The ORF clone is ion-exchange column purified and shipped in a 2D barcoded Matrix tube containing 10ug of transfection-ready, dried plasmid DNA (reconstitute with 100 ul of water).

RefSeq: [NM_001284362.2](#)

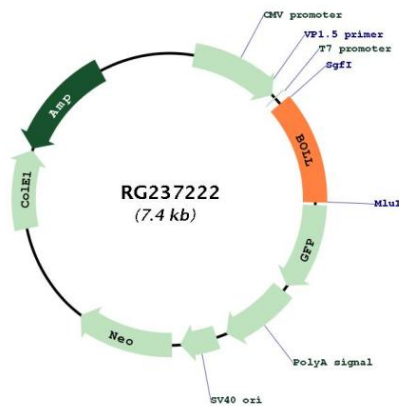
RefSeq Size: 2925 bp

RefSeq ORF: 870 bp

Locus ID: 66037
UniProt ID: [Q8N9W6](#)
Cytogenetics: 2q33.1
MW: 32.4 kDa

Gene Summary: This gene belongs to the DAZ gene family required for germ cell development. It encodes an RNA-binding protein which is more similar to Drosophila Boule than to human proteins encoded by genes DAZ (deleted in azoospermia) or DAZL (deleted in azoospermia-like). Loss of this gene function results in the absence of sperm in semen (azoospermia). Histological studies demonstrated that the primary defect is at the meiotic G2/M transition. Two alternatively spliced transcript variants encoding distinct isoforms have been found for this gene. [provided by RefSeq, Jul 2008]

Product images:



Circular map for RG237222