

Product datasheet for **RG237220**

PYCR1 (NM_001282279) Human Tagged ORF Clone

Product data:

Product Type:	Expression Plasmids
Product Name:	PYCR1 (NM_001282279) Human Tagged ORF Clone
Tag:	TurboGFP
Symbol:	PYCR1
Synonyms:	ARCL2B; ARCL3B; P5C; P5CR; PIG45; PP222; PRO3; PYCR
Mammalian Cell Selection:	Neomycin
Vector:	pCMV6-AC-GFP (PS100010)
E. coli Selection:	Ampicillin (100 ug/mL)
ORF Nucleotide Sequence:	>RG237220 representing NM_001282279. Blue=ORF Red=Cloning site Green=Tag(s)

```
GCTCGTTTAGTGAACCGTCAGAATTTTGTAAACGACTCACTATAGGGCGGCCGGGAATTCGTCGACTG
GATCCGGTACCGAGGAGATCTGCCGCCGCGATCGCC
ATGAGCGTGGGCTTCATCGGCGCTGGCCAGCTGGCTTTTGCCTGGCCAAGGGCTTACAGCAGCAGGC
GTCTTGGCTGCCACAAGATAATGGCTAGCTCCCCAGACATGGACCTGGCCACAGTTTCTGCTCTCAGG
AAGATGGGGTGAAGTTGACACCCACAACAAGGAGACGGTGCAGCACAGTGATGTGCTTCTCTGGCT
GTGAAGCCACACATCATCCCTTCATCCTGGATGAAATAGGCGCCGACATTGAGGACAGACATTGTG
GTGTCTGCGCGCCGGCGTCACCATCAGCTCCATTGAGAAGAAGCTGTCAGCGTTTCGGCCAGCCCC
AGGGTCATCCGCTGCATGACCAACTCCAGTCGTGGTGGGAGGGGGCCACCGTGTATGCCACAGGC
ACGCACGCCAGGTGGAGACGGGAGGCTCATGGAGCAGCTGCTGAGCAGCGTGGGCTTCTGCACGGAG
GTGGAAGAGGACCTGATTGATGCCGTACGCGGGCTCAGTGGCAGCGGCCCGCCTACGGGGCTGCCAAG
ATGCTGCTGCACTCAGAACAGCACCCAGGCCAGCTCAAGGACAACGTGAGCTCTCCTGGTGGGGCCACC
ATCCATGCCTTGATGTGCTGGAGAGTGGGGGCTTCCGCTCCCTGCTCATCAACGCTGTGGAGGCCCTC
TGCATCCGCACACGGGAGCTGCAGTCCATGGCTGACCAGGAGCAGGTGTCACCAGCCGCATCAAGAAG
ACCATCCTGGACAAGGTGAAGCTGGACTCCCCTGCAGGGACCCTCTGTGCCTTCTGGCCACACCAAG
CTGCTCCCCCGCAGCCTGGCCCCAGCGGCAAGGAT
ACGCGTACGCGGCCGCTCGAG - GFP Tag - GTTTAAAC
```



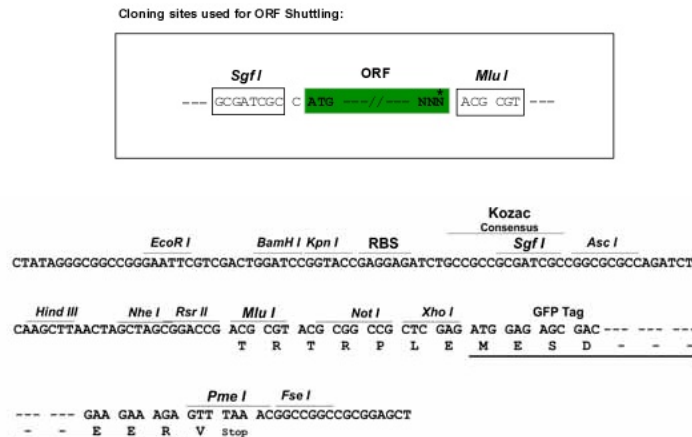
[View online »](#)

Protein Sequence: >Peptide sequence encoded by RG237220
 Blue=ORF Red=Cloning site Green=Tag(s)

MSVGFIGAGQLAFALAKGFTAAGVLAHKIMASSPMDLATVSALRKMVKLTPHNKETVQHSDFLFA
 VKPHIIPFILDEIGADIEDRHIVVSCAAGVTISSIEKKLSAFRPAPRVIRCMTNTPVVVREGATVYATG
 THAQVEDGRLMEQLLSSVGFCTEVEEDLIDAVTGLSGSGPAYGAAMLLHSEQHPQLKDNVSSPGGAT
 IHALHVLESGGFRSLLINAVEASCIRTRELQSMADQEQVSPAAIKKTILDKVKLDSPAGTALSPSGHTK
 LLPRSLAPAGKD
 TRTRPLEMESDESGLPAMEIECRITGTLNGVEFELVGGGEGTPEQGRMTNKMSTKGALTFSPYLLSHV
 MGYGFYHFGTYPSTYENPFLHAINNGGYNTRIEKYEDGGVLHVSFSYRYEAGRVIGDFKVMGTGFPED
 SVIFTDKIIRSNATVEHLHPMGDNDLDGSFTRTFSLRDGGYSSVVDSHMHFKSAIHPSILQNGGPMFA
 FRRVEEDHSNTELGIVEYQHAFKTPDADAGEERV

Restriction Sites: SgfI-MluI

Cloning Scheme:



ACCN: NM_001282279

ORF Size: 864 bp

OTI Disclaimer: The molecular sequence of this clone aligns with the gene accession number as a point of reference only. However, individual transcript sequences of the same gene can differ through naturally occurring variations (e.g. polymorphisms), each with its own valid existence. This clone is substantially in agreement with the reference, but a complete review of all prevailing variants is recommended prior to use. [More info](#)

OTI Annotation: This clone was engineered to express the complete ORF with an expression tag. Expression varies depending on the nature of the gene.

Components: The ORF clone is ion-exchange column purified and shipped in a 2D barcoded Matrix tube containing 10ug of transfection-ready, dried plasmid DNA (reconstitute with 100 ul of water).

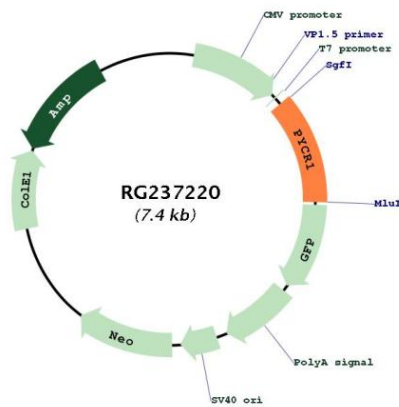
RefSeq: [NM_001282279.1](#), [NP_001269208.1](#)

RefSeq Size: 1811 bp

RefSeq ORF: 867 bp

Locus ID: 5831
Cytogenetics: 17q25.3
Protein Pathways: Arginine and proline metabolism, Metabolic pathways
MW: 30.7 kDa
Gene Summary: This gene encodes an enzyme that catalyzes the NAD(P)H-dependent conversion of pyrroline-5-carboxylate to proline. This enzyme may also play a physiologic role in the generation of NADP(+) in some cell types. The protein forms a homopolymer and localizes to the mitochondrion. Alternative splicing results in multiple transcript variants. [provided by RefSeq, Aug 2013]

Product images:



Circular map for RG237220