

## Product datasheet for **RG237217**

### LETM2 (NM\_001286787) Human Tagged ORF Clone

#### Product data:

Product Type:	Expression Plasmids
Product Name:	LETM2 (NM_001286787) Human Tagged ORF Clone
Tag:	TurboGFP
Symbol:	LETM2
Synonyms:	SLC55A2
Mammalian Cell Selection:	Neomycin
Vector:	pCMV6-AC-GFP (PS100010)
E. coli Selection:	Ampicillin (100 ug/mL)
ORF Nucleotide Sequence:	>RG237217 representing NM_001286787. Blue=ORF Red=Cloning site Green=Tag(s)

```
GCTCGTTTAGTGAACCGTCAGAATTTTGTAAACGACTCACTATAGGGCGCCGGGAATTCGTCGACTG
GATCCGGTACCGAGGAGATCTGCCGCCCGGATCGCC
ATGTTGCCATCAACTTTTAAAAGTGAATCCAAAAGGAAGAAAACAGAAAAGAAAATGGCTGTAAAG
TTGGAAGTAGCAAAATTTCTTCAAGAAACCATGACAGAAATGGCAAGGAGGAACAGAGCCAAGATGGGC
GATGCCTTACACAGCTCTCATCTACGTGAAGCAGGTCCAGACAGGCCACAAGCCAGCACAAAGGAG
ATAGTTCGCTTCCAAACTATTTGAGGACCAGCTGGCCCTGGAACACTTAGATCGCCCTCAGCTGGTT
GCCCTTGGCAACTGCTGGAATGCAGACATTTGGAACCAACAACCTGCTCCGCTTTCAGCTCCTGATG
AAACTGAAGTCTATAAAGCAGATGATGAAATAATTGCCAAGGAAGGGGTGACAGCATTGAGTGTATCA
GAACTACAGGCTGCCTGTAGGGCCCGAGGGATGAGATCACTGGGTCTCACGGAGGAACAACCTGCGACAA
CAGCTCACGGAGTGGCAGGACCTCCACCTGAAGGAGAACGTCCCTCCTTCCCTTTTGTCTCTGTCCCGC
ACCTTCTACCTGATAGATGTGAAGCCCAAGCCGATTGAGATACCACTCAGTGGGGAGGCTCCAAAGACT
GATATTCTTGGAATTACCTACTTTCACTGAATCTAAAGAGAACATGGTGGATCTTGCACCTCAACTG
AAGGGAACAAAGGATGAAGACTTTATACAGCCGCCACCAGTTACATCATCAACCCATAACACCATCAACA
CCTATTTACCTAACCTAAAGACCCATCACTTCTTCTGAAGAACCTACACTCCAGGCCAAATCACAAATG
ACGGCCAGAACAGCAAGGCTAGTTCAAAAGGAGCA
ACGGGTACGGCGCCGCTCGAG - GFP Tag - GTTTAAAC
```



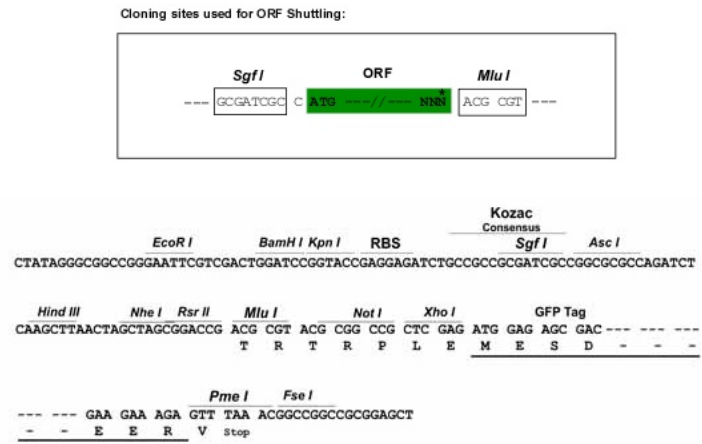
[View online »](#)

**Protein Sequence:** >Peptide sequence encoded by RG237217  
 Blue=ORF Red=Cloning site Green=Tag(s)

MLPSTFESESKKEEKQKKKMAVKLELAKFLQETMTEMARRNRAKMGDASTQLSSYVKQVQTGHKPSTKE  
 IVRFSKLFEDQLALEHLDRPQLVALCKLLELQTFGTNLLRFQLLMKLSIKADDEIIAKEGVTAHSV  
 ELQAACRARGMRLGLTEEQLRQQLTEWQDLHLKENVPPSLLLLSRTFYLIDVKPKPIEIPLSGEAPKT  
 DILVELPTFTESKENMVDLAPQLKGTKDEDFIQPPPVTSSPITPSTPISLPGKPISSSEPTLQAKSQM  
 TAQNSKASSKGA  
 TRTRPLEMESDESGLPAMEIECRITGTLNGVEFELVGGEGTPEQGRMTNKMSTKGALTFSPYLLSHV  
 MGYGFYHFGTYPSTYENPFLHAINNGGYNTRIEKYEDGGVLHVSFSYRYEAGRVIGDFKVMGTGFPED  
 SVIFTDKIIRSNAIVEHLHPMGDNDLDGSFTRTFSLRDGGYSSVVDSHMHFKSAIHPSILQNGGPMFA  
 FRRVEEDHSNTELGIVEYQHAFKTPDADAGEERV

**Restriction Sites:** SgfI-MluI

**Cloning Scheme:**



**ACCN:** NM\_001286787

**ORF Size:** 864 bp

**OTI Disclaimer:** The molecular sequence of this clone aligns with the gene accession number as a point of reference only. However, individual transcript sequences of the same gene can differ through naturally occurring variations (e.g. polymorphisms), each with its own valid existence. This clone is substantially in agreement with the reference, but a complete review of all prevailing variants is recommended prior to use. [More info](#)

**OTI Annotation:** This clone was engineered to express the complete ORF with an expression tag. Expression varies depending on the nature of the gene.

**Components:** The ORF clone is ion-exchange column purified and shipped in a 2D barcoded Matrix tube containing 10ug of transfection-ready, dried plasmid DNA (reconstitute with 100 ul of water).

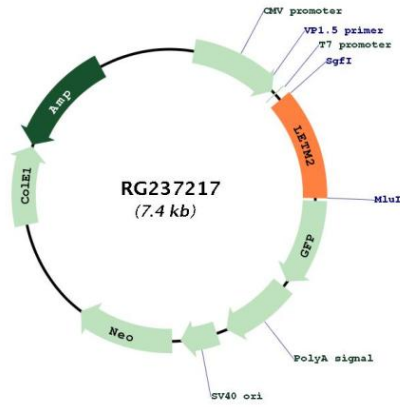
**RefSeq:** [NM\\_001286787.1](#), [NP\\_001273716.1](#)

**RefSeq Size:** 2817 bp

**RefSeq ORF:** 867 bp

Locus ID: 137994  
 Cytogenetics: 8p11.23  
 MW: 32.6 kDa

**Product images:**



Circular map for RG237217