

## Product datasheet for **RG237216**

### Acidic Calponin (CNN3) (NM\_001286056) Human Tagged ORF Clone

#### Product data:

Product Type:	Expression Plasmids
Product Name:	Acidic Calponin (CNN3) (NM_001286056) Human Tagged ORF Clone
Tag:	TurboGFP
Symbol:	CNN3
Mammalian Cell Selection:	Neomycin
Vector:	pCMV6-AC-GFP (PS100010)
E. coli Selection:	Ampicillin (100 ug/mL)
ORF Nucleotide Sequence:	>RG237216 representing NM_001286056. Blue=ORF Red=Cloning site Green=Tag(s)

```
GCTCGTTTAGTGAACCGTCAGAATTTGTAAATACGACTCACTATAGGGCGGCCGGGAATTCGTCGACTG
GATCCGGTACCGAGGAGATCTGCCGCCGCGATCGCC
ATGAGCATTGGCCCAACTTCCAGCTGGGCTTAAAGGATGGCATCATCCTCTGCGAACTTATAAACAAG
CTACAGCCAGGCTCAGTGAAGAAGGTCAACGAGTCCTCACTGAACTGGCCTCAGTTGGAGAATATTGGC
AACTTTATTAAGCTATTCAGGCTTATGGTATGAAGCCACATGACATATTCGAAGCAAATGATCTTTTT
GAGAATGGAAACATGACCCAGGTTTCAGACTACTCTGGTGGCTCTAGCAGGCTGGCTAAAACAAAAGGA
TTCCATACAACCATTGACATTGGAGTTAAGTATGCAGAAAAACAACAAGACGTTTTGATGAAGGAAAA
TTAAAAGCTGGCCAAAGTGAATTGGTCTGCAGATGGGAACCAAAATGTCCAGCCAGGCAGGTATG
ACAGCTTACGGGACTAGGAGGCATCTTTATGATCCAAAATGCAAACGACAAACCTTTTGACCAGACC
ACAATTAGTCTGCAGATGGGCACTAATAAAGGAGCCAGCCAGGCAGGGATGTTAGCACCAGTACCAGA
AGAGACATCTATGATCAGAAGCTAACATTACAGCCGGTGGACAACGACAATTTCCCTACAGATGGGT
ACCAACAAAGTTGCTTCCAGAAAGGAATGAGTGTGTATGGGCTTGGGCGCAAGTATATGATCCAAA
TACTGTGCTGCTCTACAGAACCTGTCATTACAACGGAAGCCAAGGAACAGGAACAAATGGTTCGGAA
ATCAGTGATAGTGATTATCAGGCAGAATACCCTGATGAGTATCATGGCGAGTACCAGGATGACTACCCC
AGAGATTACCAATATAGCGACCAAGGCATTGATTAT
ACGCGTACGCGGCCGCTCGAG - GFP Tag - GTTTAAAC
```



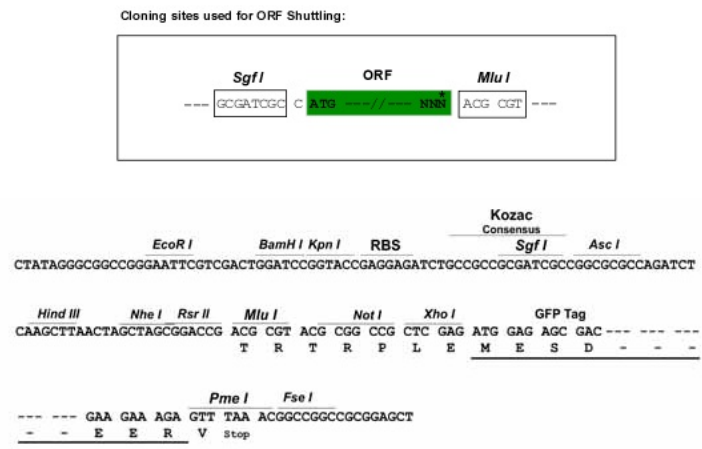
[View online »](#)

**Protein Sequence:** >Peptide sequence encoded by RG237216  
 Blue=ORF Red=Cloning site Green=Tag(s)

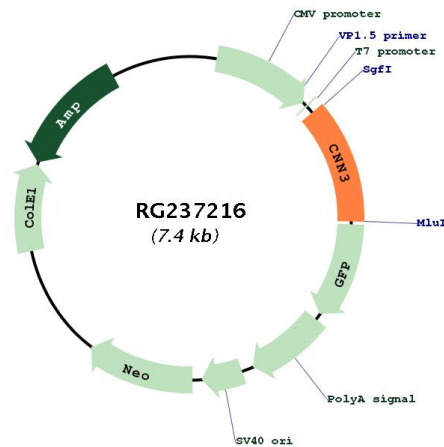
MSIGPNFQLGLKDGII LCELINKLQPGSVKKNVSSLNWPQLENIGNFIKAIQAYGMKPHDIFEANDLF  
 ENGNMTQVQTTLVALAGLAKTKGFHTTIDIGVKYAEKQTRRFDEGKLGAGQSVIGLQMGTNKCASQAGM  
 TAYGTRRHLYDPKMQTDKPFQDTTISLQMGNTKASQAGMLAPGTRRDIYDQKLTLQVPDNSTISLQMG  
 TNKVASQKGMSSVYGLGRQVYDPKYCAAPTEPVIHNGSQGTGTNGSEISDSYQAEYVDEYHGEYQDDYP  
 RDYQYSDQGIDY  
 TRTRPLEMESESGLPAMEIECRITGTLNGVEFELVGGGEGTPEQGRMTNKMKSTKGALTFSPYLLSHV  
 MGYGFYHFGTYPSTYENPFLHAINNGGYTNTRIEKYEDGGVLHVSFSYRYEAGRVIGDFKVMGTGFPEP  
 SVIFTDKIIRS NATVEHLHPMGDNDLDGSFTRTFSLRDGGYSSVVD SHMHFKSAIHPSILQNGGPMFA  
 FRRVEEDHSNTELGIVEYQHAFKTPDADAGEERV

**Restriction Sites:** SgfI-MluI

**Cloning Scheme:**



**Plasmid Map:**



ACCN:	NM_001286056
ORF Size:	864 bp
OTI Disclaimer:	The molecular sequence of this clone aligns with the gene accession number as a point of reference only. However, individual transcript sequences of the same gene can differ through naturally occurring variations (e.g. polymorphisms), each with its own valid existence. This clone is substantially in agreement with the reference, but a complete review of all prevailing variants is recommended prior to use. <a href="#">More info</a>
OTI Annotation:	This clone was engineered to express the complete ORF with an expression tag. Expression varies depending on the nature of the gene.
Components:	The ORF clone is ion-exchange column purified and shipped in a 2D barcoded Matrix tube containing 10ug of transfection-ready, dried plasmid DNA (reconstitute with 100 ul of water).
RefSeq:	<a href="#">NM_001286056.1</a> , <a href="#">NP_001272985.1</a>
RefSeq Size:	1902 bp
RefSeq ORF:	867 bp
Locus ID:	1266
UniProt ID:	<a href="#">Q15417</a>
Cytogenetics:	1p21.3
MW:	32.2 kDa
Gene Summary:	This gene encodes a protein with a markedly acidic C terminus; the basic N-terminus is highly homologous to the N-terminus of a related gene, CNN1. Members of the CNN gene family all contain similar tandemly repeated motifs. This encoded protein is associated with the cytoskeleton but is not involved in contraction. [provided by RefSeq, Jul 2008]