

Product datasheet for **RG237208**

zinc finger protein 138 (ZNF138) (NM_001271638) Human Tagged ORF Clone

Product data:

Product Type:	Expression Plasmids
Product Name:	zinc finger protein 138 (ZNF138) (NM_001271638) Human Tagged ORF Clone
Tag:	TurboGFP
Symbol:	zinc finger protein 138
Synonyms:	pHZ-32
Mammalian Cell Selection:	Neomycin
Vector:	pCMV6-AC-GFP (PS100010)
E. coli Selection:	Ampicillin (100 ug/mL)
ORF Nucleotide Sequence:	>RG237208 representing NM_001271638. Blue=ORF Red=Cloning site Green=Tag(s)

```
GCTCGTTTAGTGAACCGTCAGAATTTTGTAAACGACTCACTATAGGGCGCCGGGAATTCGTCGACTG
GATCCGGTACCGAGGAGATCTGCCGCCGCGATCGCC
ATGGATGTGGCCATAGAGTTCTCTTTGGAGGAGTGGCAGTGCCTGGACTGCACAGCGGAATGTATAT
AGGCATGTGATGTTAGAGAACTACAGAAACCTGGTTTTCTTGGCTCTGTGTTCTCGTTTTGCCAAGAC
CTTTGGCTAGAGCAGAACATAAAAAGATTCTTTCCAAAAGTGACTGAGCAGATATGGAAAATATGGA
CATAAGAATTTACAGTTAAGAAAAGGCTGTAAAAGTGGATGAGTGTAAAGGACACCAAGGAGTTAT
AATGGACTTAACCAATGTTTAAAAATTACCACAAGCAAAATATTTCAATGAATAAATATGTAAAAGTC
ATGCATAAATTTCAAATTCAAATAGACACAAGATAAGACATACTGAAAAATAACATTTTCAGATGTAAA
GAATGTGACAAATCACTTTGCATGCTTTACGCCTAACTCAACATAAAAAAATTCATACTAGAGAGAAT
TTCTACAAATGTGAAGAGTGTGGAAAAACCTTTAACTGGTCCACAAACCTTTCTAAACCTAAGAAAATT
CATACTGGAGAAAAACCTACAAATGTGAAGTATGTGGAAAAGCCTTTACCAATCCTCAATCCTTACT
AAACATAAGATAATTCGTAAGAGAAAAACCTATAAATGTGCACACTGTGGCAAAGCCTTTAAACAG
TCCTCACACCTTACTAGACATAAGATAATTCATACTGAAGAGAAAACCTACAAATGTGAACAATGTGGC
AAGTCTTTAAGCAGTCCCAACCTTACTAAACATCAGATAATTTATACTGGAGAGGAACCATACAAA
TGTGAGGAATGTGGCAAAGCTTTTAAACCTATCT
ACGCGTACGCGGCCGCTCGAG - GFP Tag - GTTTAAAC
```



[View online »](#)

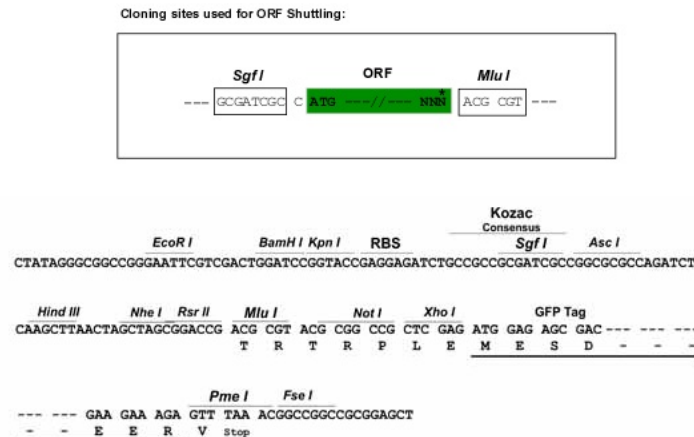
Protein Sequence: >Peptide sequence encoded by RG237208
 Blue=ORF Red=Cloning site Green=Tag(s)

MDVAIEFSLEEWQCLDTAQRNVYRHVMLENYRNLVFLALCSRFAQDLWLEQNIKDSFQKVTLSRYGKYG
 HKNLQLRKGCKSVDECKGHQGGYNLQCLKITTSKI FQC NKYKVMHKFSNSNRHKIRHTENKHFRCCK
 ECDKSLCML SRL TQHKKIHTRENFYKCECGKTFNWSTNL SKPKKIHTGEKPYKCEVCGKAFHQSSILT
 KHKIIRTGEKPYKCAHC GKAFKQSSHL TRHKI IHTEEKPYKCEQCGKVFQKQSPTL TKHQI IYTGE EEPYK
 CEECGKAFNLS

TRTRPLEMESDESGLPAMEIECRITGTLNGVEFELVGGGEGTPEQGRMTNKMKSTKGALTFSPYLLSHV
 MGYGFYHFGTYP SGYENPFLHAINNGGYNTRIEKYEDGGVLHVSFSYRYEAGRVIGDFKVMGTGFPED
 SVIFTDKIIRSNATVEHLHPMGDNDLDGSFTRTFSLRDGGYSSVVD SHMHFKSAIHPSILQNGGPMFA
 FRRVEEDHSNTELGIVEYQHAFKTPDADAGEERV

Restriction Sites: SgfI-MluI

Cloning Scheme:



ACCN: NM_001271638

ORF Size: 861 bp

OTI Disclaimer: The molecular sequence of this clone aligns with the gene accession number as a point of reference only. However, individual transcript sequences of the same gene can differ through naturally occurring variations (e.g. polymorphisms), each with its own valid existence. This clone is substantially in agreement with the reference, but a complete review of all prevailing variants is recommended prior to use. [More info](#)

OTI Annotation: This clone was engineered to express the complete ORF with an expression tag. Expression varies depending on the nature of the gene.

Components: The ORF clone is ion-exchange column purified and shipped in a 2D barcoded Matrix tube containing 10ug of transfection-ready, dried plasmid DNA (reconstitute with 100 ul of water).

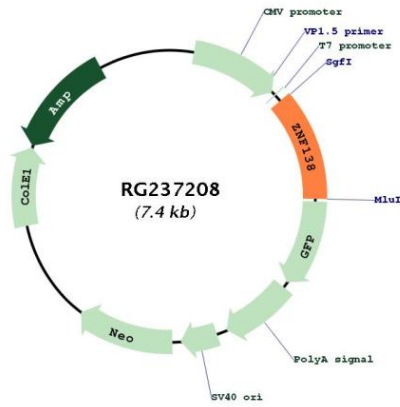
RefSeq: [NM_001271638.1](#), [NP_001258567.1](#)

RefSeq Size: 2631 bp

RefSeq ORF: 864 bp

Locus ID: 7697
 Cytogenetics: 7q11.21
 Protein Families: Transcription Factors
 MW: 34.2 kDa
 Gene Summary: May be involved in transcriptional regulation as a repressor.[UniProtKB/Swiss-Prot Function]

Product images:



Circular map for RG237208