

Product datasheet for **RG237186**

GRASP65 (GORASP1) (NM_001278790) Human Tagged ORF Clone

Product data:

| | |
|---------------------------|--|
| Product Type: | Expression Plasmids |
| Product Name: | GRASP65 (GORASP1) (NM_001278790) Human Tagged ORF Clone |
| Tag: | TurboGFP |
| Symbol: | GRASP65 |
| Synonyms: | GOLPH5; GRASP65; P65 |
| Mammalian Cell Selection: | Neomycin |
| Vector: | pCMV6-AC-GFP (PS100010) |
| E. coli Selection: | Ampicillin (100 ug/mL) |
| ORF Nucleotide Sequence: | >RG237186 representing NM_001278790. Blue=ORF Red=Cloning site Green=Tag(s) |

```
GCTCGTTTAGTGAACCGTCAGAATTTTGTAAACGACTCACTATAGGGCGGCCGGGAATTCGTCGACTG
GATCCGGTACCGAGGAGATCTGCCGCCGCGATCGCC
ATGGGCCTGGGCGTCAGCGCTGAGCAGCCCGCAGGCGGGCGCCGAGGGCTTCCACCTCCACGGGGATGTG
GAACCATCTTCACCTGCTGCCCTTGCCGGCCTGCGCCCTACACAGACTATGTGGTTGGTTCGGACCAG
ATTCTCCAGGAGCCCCCAGCTACCACAAGAAGCCACCTGGCACCCACCACCTTCTGCTTACCCTT
GGTGCCCCACCACCTGATGCTCTACCACCTGGACCCACCCCGAGGACTCTCTTCCCTGGAGACAGGT
TCCAGGCAGAGTGACTACATGGAGGCCCTGCTGCAGGCACCTGGCTCCTCCATGGAGGATCCCCTTCT
GGGCCTGGGAGTCCCAGCCACAGTGCTCCAGACCCTGATGGACTTCCCCATTTTCATGGAGACTCCTCTT
CAGCCCCCACCTCCAGTGCAGCGAGTTATGGACCCAGGCTTCTTGACGTGTCGGGAATTTCTCTCTTG
GACAACAGCAATGCCAGTGTGTGGCCAGCCTGCCCTTCCACAGAAGTACCACACAGCTGTCTCA
ACCTCAGGGCCAGAGGACATCTGCTCCAGCAGCAGTTCTCATGAGCGGGGTGGTGAAGCTACATGGTCT
GGGTGAGAGTTTGGGTCTCCTTCTGACAGCCAGGTGCCAAGCCAGGCGGACCACCTGCCTCAG
CTGACTTCTGACAGTCTCACCTCTGCAGCCTCACCAGAAGATGGGCTGTCCGCCGAGCTGCTTGAA
GCTCAGGCTGAGGAGGAACCAGCAAGCACAGAGGGCCTAGATACTGGGACGGAGGCTGAGGGGCTGGAC
AGCCAGGCCAGATCTCTACCACAGAA
ACGCGTACGCGGCCGCTCGAG - GFP Tag - GTTTAAAC
```



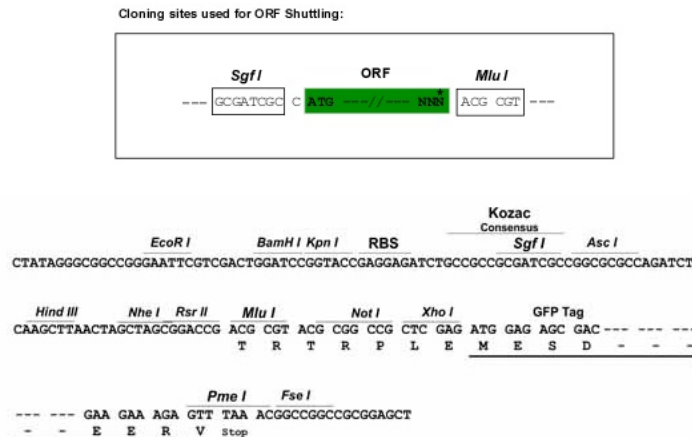
[View online »](#)

Protein Sequence: >Peptide sequence encoded by RG237186
 Blue=ORF Red=Cloning site Green=Tag(s)

MGLGVSAEQPAGGAEGFHLHGDVEPSSPAALAGLRPYTDYVVGSDQILQEPPSYHKKPPGTPPPSALPL
 GAPPDPALPPGPTPEDSPSLETGSRQSDYMEALLQAPGSSMEDPLPGPGSPSHSAPDPDGLPHFMETPL
 QPPPPVQRVMDPGFLDVSGISLLDNSNASVWPSLPSSTELTTTAVSTSGPEDICSSSSSHERGGEATWS
 GSEFEVSFLDSPGAQAQADHLPQLTLPDSL TSAASPEDGLSAELLEAQAEEEPASTEGLDTGTEAEGLD
 SQAQISTTE
 TRTRPLEMESDESGLPAMEIECRITGTLNGVEFELVGGEGTPEQGRMTNKMSTKGALTFSPYLLSHV
 MGYGFYHFGTYPSTYENPFLHAINNGGYNTRIEKYEDGGVLHVSFSYRYEAGRVIGDFKVMGTGFPED
 SVIFTDKIIRSNATVEHLHPMGDNDLDGSFTRTFSLRDGGYSSVVDSHMHFKSAIHPSILQNGGPMFA
 FRRVEEDHSNTELGIVEYQHAFKTPDADAGEERV

Restriction Sites: SgfI-MluI

Cloning Scheme:



ACCN: NM_001278790

ORF Size: 855 bp

OTI Disclaimer: The molecular sequence of this clone aligns with the gene accession number as a point of reference only. However, individual transcript sequences of the same gene can differ through naturally occurring variations (e.g. polymorphisms), each with its own valid existence. This clone is substantially in agreement with the reference, but a complete review of all prevailing variants is recommended prior to use. [More info](#)

OTI Annotation: This clone was engineered to express the complete ORF with an expression tag. Expression varies depending on the nature of the gene.

Components: The ORF clone is ion-exchange column purified and shipped in a 2D barcoded Matrix tube containing 10ug of transfection-ready, dried plasmid DNA (reconstitute with 100 ul of water).

RefSeq: [NM_001278790.2](#)

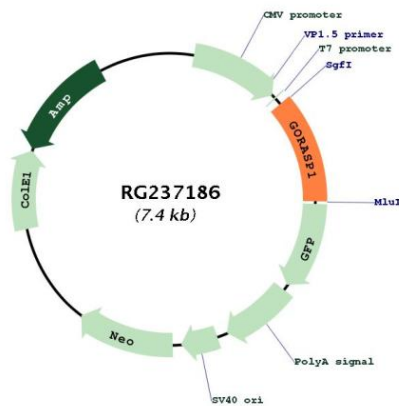
RefSeq Size: 2861 bp

RefSeq ORF: 858 bp

Locus ID: 64689
UniProt ID: [Q9BQQ3](#)
Cytogenetics: 3p22.2
MW: 29.6 kDa

Gene Summary: The Golgi complex plays a key role in the sorting and modification of proteins exported from the endoplasmic reticulum. The protein encoded by this gene is a membrane protein involved in establishing the stacked structure of the Golgi apparatus. It is a caspase-3 substrate, and cleavage of this encoded protein contributes to Golgi fragmentation in apoptosis. This encoded protein can form a complex with the Golgi matrix protein GOLGA2, and this complex binds to the vesicle docking protein p115. Alternative splicing results in multiple transcript variants of this gene. [provided by RefSeq, Jul 2013]

Product images:



Circular map for RG237186