

Product datasheet for **RG237182**

LINC02210-CRHR1 (NM_001303016) Human Tagged ORF Clone

Product data:

Product Type:	Expression Plasmids
Product Name:	LINC02210-CRHR1 (NM_001303016) Human Tagged ORF Clone
Tag:	TurboGFP
Symbol:	LINC02210-CRHR1
Synonyms:	CRHR1-IT1-CRHR1; MGC57346-CRHR1
Mammalian Cell Selection:	Neomycin
Vector:	pCMV6-AC-GFP (PS100010)
E. coli Selection:	Ampicillin (100 ug/mL)
ORF Nucleotide Sequence:	>RG237182 representing NM_001303016. Blue=ORF Red=Cloning site Green=Tag(s)

```
GCTCGTTTAGTGAACCGTCAGAATTTTGTAAACGACTCACTATAGGGCGGCCGGGAATTCGTCGACTG
GATCCGGTACCGAGGAGATCTGCCGCCCGGATCGCC
ATGGTGTCCGCTACAATACCACAAAAAAGCAAGGTGCACTACCATGTCGCAGTCATCATCAACTAC
CTGGGCCACTGTATCTCCCTGGTGGCCCTCTGGTGGCCTTTGCCTCTTCTGCGGCTCAGGAGCATC
CGGTGCCGTGCGAAACATCATCCACTGGAACCTCATCTCCGCCTTCATCCTGCGCAACGCCACCTGGTTC
GTGGTCCAGCTAACCATGAGCCCCGAGGTCCACCAGAGCAACGTGGGCTGGTGCAGGTTGGTGACAGCC
GCCTACAACACTTCCATGTGACCAACTCTTCTGGATGTTCCGGCAGGGCTGCTACCTGCACACAGCC
ATCGTGCTCACCTACTCCACTGACCGGCTGCGCAAATGGATGTTTCATCTGCATTGGCTGGGGTGTGCC
TTCCCCATCATTGTGGCCTGGGCCATTGGGAAGCTGTACTACGACAATGAGAAGTCTGGTTTGGCAA
AGGCCTGGGGTGTACACCGACTACATCTACCAGGGCCCCATGATCCTGGTCTGTGATCAATTTATC
TTCTTTTCAACATCGTCCGCATCTCATGACCAAGCTCCGGGCATCCACCACGTCTGAGACCATTGAG
TACAGGGCTTCTTTGTGTCTGTGTTCTACTGTTTCTCAATAGTGAGGTCGGTCTGCCATCCGGAAGA
GGTGGCACCGGTGGCAGGACAAGCACTCGATCCGTGCCGAGTGGCCCGTCCATGTCCATCCCCACCT
CCCCAACCGTGTGAGCTTTCACAGCATCAAGCAGTCCACAGCAGTCTGAGCTGGCAGGTCATGGAGCA
GCCCCAAAGAGCTGTGGCTGGGGGA
ACGCGTACGCGGCCGCTCGAG - GFP Tag - GTTTAAAC
```



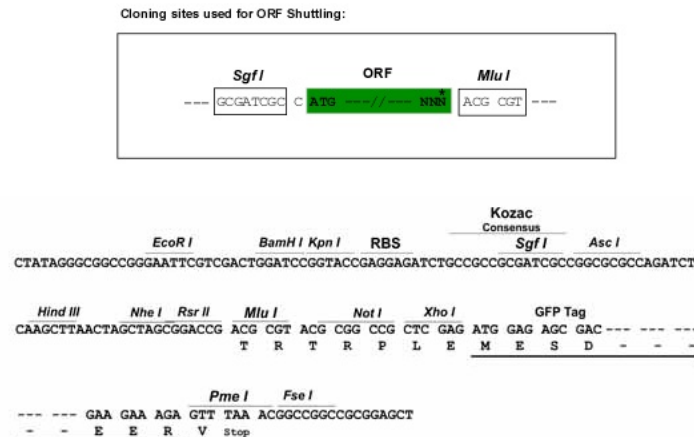
[View online »](#)

Protein Sequence: >Peptide sequence encoded by RG237182
 Blue=ORF Red=Cloning site Green=Tag(s)

MVSATIPQKKS~~KVHYHVAVI~~I~~NYLGH~~CISLVALLVAFVLFRLRSIRCLRNIIHWNLISAFILRNATWF
 VVQLTMSPEVHQSNV~~GW~~CRLVTAAYNYFHVTNFFWMFGE~~GCYLHTAIVL~~TYSTDRLRKWMFICIGWGVP
 FPII~~VAWAIGKL~~YDNEK~~CWF~~GKRP~~GVYTDYIYQ~~GPMLVLLIN~~IFL~~FNIVRILMTKLRAS~~TTSETIQ~~
 YRASLCLCSTVSSIVRSVLP~~SGRGGTGGRT~~STRSVPEWPVPCSP~~PPQPVSAFTA~~SSPQ~~QSEL~~AGHGA
 APKELWLG
 TRTRPLEME~~SDE~~SGLPAMEIECRITGTLNGVEFELVGGGEGTPEQGRMTNKM~~KSTKG~~ALTFSPYLLSHV
 MGYGFYHFGTYP~~SGYENPFL~~HA~~INNGGY~~TNTRIEKYEDGGVLHVSFSYRYEAGRVIGDFKVMGTGF~~PED~~
 SVIF~~TDKI~~I~~RS~~NATVEHLHPMGDNDLDGSFTRTFSLRDGGYSSVVD~~SHMHF~~KSAIHPSILQNGGPMFA
 FRRVEEDHSNTELGIVEYQHAFKTPDADAGEERV

Restriction Sites: SgfI-MluI

Cloning Scheme:



ACCN: NM_001303016

ORF Size: 855 bp

OTI Disclaimer: The molecular sequence of this clone aligns with the gene accession number as a point of reference only. However, individual transcript sequences of the same gene can differ through naturally occurring variations (e.g. polymorphisms), each with its own valid existence. This clone is substantially in agreement with the reference, but a complete review of all prevailing variants is recommended prior to use. [More info](#)

OTI Annotation: This clone was engineered to express the complete ORF with an expression tag. Expression varies depending on the nature of the gene.

Components: The ORF clone is ion-exchange column purified and shipped in a 2D barcoded Matrix tube containing 10ug of transfection-ready, dried plasmid DNA (reconstitute with 100 ul of water).

RefSeq: [NM_001303016.1](#), [NP_001289945.1](#)

RefSeq Size: 2522 bp

RefSeq ORF: 858 bp

Locus ID: 104909134

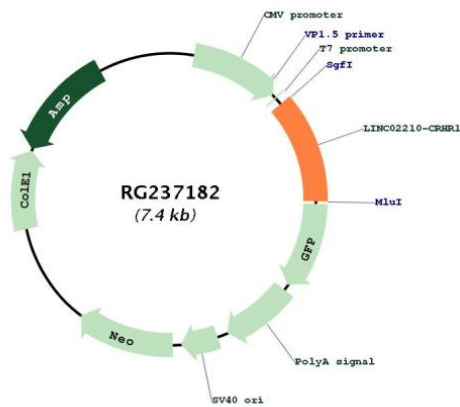
UniProt ID: [P34998](#)

Cytogenetics: 17q21.31

MW: 32.5 kDa

Gene Summary: This locus represents naturally occurring readthrough transcription between neighboring genes CRHR1-IT1, CRHR1 intronic transcript 1 (Gene ID: 147081) and CRHR1, corticotropin releasing hormone receptor 1 (Gene ID: 1394) on chromosome 17. The readthrough transcript encodes a protein that shares sequence identity with the product of the CRHR1 gene. [provided by RefSeq, Dec 2016]

Product images:



Circular map for RG237182