

## Product datasheet for **RG237164**

### PSMG1 (NM\_001261824) Human Tagged ORF Clone

#### Product data:

Product Type:	Expression Plasmids
Product Name:	PSMG1 (NM_001261824) Human Tagged ORF Clone
Tag:	TurboGFP
Symbol:	PSMG1
Synonyms:	C21LRP; DSCR2; LRPC21; PAC-1; PAC1
Mammalian Cell Selection:	Neomycin
Vector:	pCMV6-AC-GFP (PS100010)
E. coli Selection:	Ampicillin (100 ug/mL)
ORF Nucleotide Sequence:	>RG237164 representing NM_001261824. Blue=ORF Red=Cloning site Green=Tag(s)

```
GCTCGTTTAGTGAACCGTCAGAATTTTGTAAACGACTCACTATAGGGCGGCCGGGAATTCGTCGACTG
GATCCGGTACCGAGGAGATCTGCCGCCGCGATCGCC
ATGGCGGCCACGTTCTTCGGAGAGGTGGTGAAGGCGCCGTGCCGAGCTGGGACTGAGGACGAAGAGGAG
GAGGAGGAGGGGCGGAGGGAGACGCCCGAGGACAGGGAGGTGCGTCTGCAGCTGGCGCGGAAGAGGGAA
GTGCGGCTCCTTCGAAGACAAACAAAACATCTTTGGAAGTTCTTTGCTAGAAAAATATCCGTGCTCC
AAGTTTAAATTGCTATAGGAAATAATGCAGTAGCATTCTGTGCATCATTTGTTATGAATTCAGGAGTC
TGGGAGGAAGTTGGTTGTCTAAACTCTGGAATGAATGGTGTAGAACAACAGACACTACACATCTGTCC
TCCACAGAGGCTTTTTGTGTGTTTTATCATCTAAAATCCAATCCCTCGTGCAGTTGCTATGTTGCAGAA
GATCAACAGTATCAGTGGCTGGAAAAGTTTTTGGCTCTGTCCAAGGAAGAACATGCAGATAACTATT
CTCACATGTGACATGTTACCGATTATAAAACCTCAGAATCCACCGGCAGCCTTCCTTCTCCTTTCTG
AGAGCCCTAAAAACACAGAATTTCAAAGACTCGGCGTGTGTCCATTGCTAGAACAAACCGAATATAGTA
CACGACCTTCTGCAGCAGTTCTAAGCTACTGTCAAGTATGAAAATCCCAGCAATTCTGTACTTGTGT
TATACTGATGTGATGAAATTAGACCTAATCACAGTGGAAGCTTTTAAGCCTATACTTTCTACCAGAAGC
TTGAAGGTTTGGTTAAGAATATCCCCAAAGCACTGAGATACTAAAGAAATTGATGACAACAAATGAG
ATTCAGAGTAACATTTATACA
ACGCGTACGCGGCCGCTCGAG - GFP Tag - GTTTAAAC
```



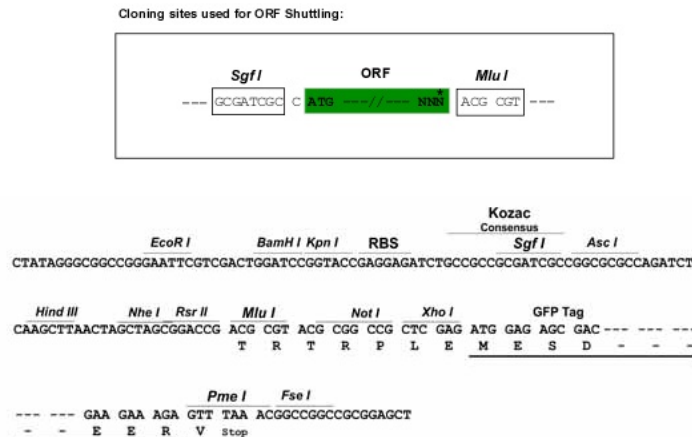
[View online »](#)

**Protein Sequence:** >Peptide sequence encoded by RG237164  
 Blue=ORF Red=Cloning site Green=Tag(s)

MAATFFGEVVKAPCRAGTEDEEEEEGRRETPEDREVRLQLARKREVRLRRQTKTSLEVSLLLEKYPCS  
 KFIIAIGNNAVAFLSSFVMNSGVWEEVGCALWNEWCRTDTHLSSTEAFVVFYHLKSNPSCSCYVAE  
 DQYQWLEKVFVGCSPRKNMQITILTCRHVTDYKTSESTGSLPSPFLRALKTQNFKDSACCPLEQPNIV  
 HDLPAAVLSYQCQVWKIPAILYLCTYDVMKLDLITVEAFKPIILSTRSLKGLVKNIPQSTEILKMLMTNE  
 IQSNIYT  
 TRTRPLEMESDESGLPAMEIECRITGTLNGVEFELVGGEGTPEQGRMTNKMKSTKGALTFSPYLLSHV  
 MGYGFYHFGTYPSTYENPFLHAINNGGYNTRIEKYEDGGVLHVSFSYRYEAGRVIGDFKVMGTGFPED  
 SVIFTDKIIIRSNATVEHLHPMGDNDLDGSFTRTFSLRDGGYSSVVDSHMHFKSAIHPSILQNGGPMFA  
 FRRVEEDHSNTELGIVEYQHAFKTPDADAGEERV

**Restriction Sites:** SgfI-MluI

**Cloning Scheme:**



**ACCN:** NM\_001261824

**ORF Size:** 849 bp

**OTI Disclaimer:** The molecular sequence of this clone aligns with the gene accession number as a point of reference only. However, individual transcript sequences of the same gene can differ through naturally occurring variations (e.g. polymorphisms), each with its own valid existence. This clone is substantially in agreement with the reference, but a complete review of all prevailing variants is recommended prior to use. [More info](#)

**OTI Annotation:** This clone was engineered to express the complete ORF with an expression tag. Expression varies depending on the nature of the gene.

**Components:** The ORF clone is ion-exchange column purified and shipped in a 2D barcoded Matrix tube containing 10ug of transfection-ready, dried plasmid DNA (reconstitute with 100 ul of water).

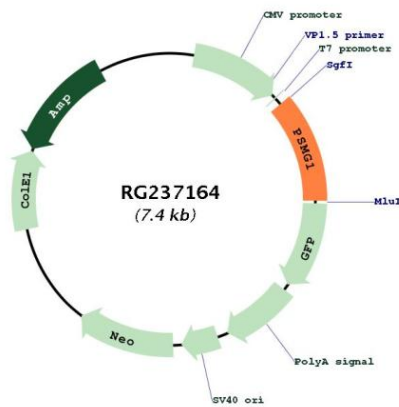
**RefSeq:** [NM\\_001261824.1](#), [NP\\_001248753.1](#)

**RefSeq Size:** 1125 bp

**RefSeq ORF:** 852 bp

**Locus ID:** 8624  
**Cytogenetics:** 21q22.2  
**MW:** 32.7 kDa  
**Gene Summary:** Chaperone protein which promotes assembly of the 20S proteasome as part of a heterodimer with PSMG2. The PSMG1-PSMG2 heterodimer binds to the PSMA5 and PSMA7 proteasome subunits, promotes assembly of the proteasome alpha subunits into the heteroheptameric alpha ring and prevents alpha ring dimerization.[UniProtKB/Swiss-Prot Function]

**Product images:**



Circular map for RG237164