

Product datasheet for **RG237159**

RNPS1 (NM_001286626) Human Tagged ORF Clone

Product data:

| | |
|---------------------------|--|
| Product Type: | Expression Plasmids |
| Product Name: | RNPS1 (NM_001286626) Human Tagged ORF Clone |
| Tag: | TurboGFP |
| Symbol: | RNPS1 |
| Synonyms: | E5.1 |
| Mammalian Cell Selection: | Neomycin |
| Vector: | pCMV6-AC-GFP (PS100010) |
| E. coli Selection: | Ampicillin (100 ug/mL) |
| ORF Nucleotide Sequence: | >RG237159 representing NM_001286626. Blue=ORF Red=Cloning site Green=Tag(s) |

```
GCTCGTTTAGTGAACCGTCAGAATTTTGTAAACGACTCACTATAGGGCGCCGGGAATTCGTCGACTG
GATCCGGTACCGAGGAGATCTGCCGCCGCGATCGCC
ATGGCTCCTTCACCTACCAAACGCAAAGACCGCTCAGATGAGAAGTCCAAGGATCGCTCAAAAGATAAA
GGGGCCACCAAGGAGTCGAGTGAGAAGGATCGCGGCCGGGACAAAACCCGAAAGAGGCGCAGCGCTTCC
AGTGGTAGCAGCAGTACCAGGTCTCGGTCCAGCTCGACTTCCAGCTCAGGCTCCAGCACCCAGCACTGGC
TCAAGCAGTGGCTCCAGCTCTTCTCAGCATCCAGCCGCTCAGGAAGCTCCAGCACCTCCCGCAGCTCC
AGCTCTAGCAGCTCTTCTGGCTCTCAAGTCCTTCTCGGCGCAGACACGACAACAGGAGGCGCTCCCGC
TCCAAATCCAAACCACCTAAAAGAGATGAAAAGGAGAGGAAAAGGCGGAGCCCATCTCCTAAGCCCACC
AAAGTGCACATTGGGAGACTCACCCGGAATGTGACAAAGGATCACATCATGGAGATATTTTCCACCTAT
GGGAAAATTTAAATGATTGACATGCCCGTGAAAAGGATGCATCCCCATCTGTCCAAGGCTATGCGTAC
GTAGAGTTTGAGAATCCAGATGAAGCCGAGAAGGCGCTGAAGCACATGGATGGAGGACAAATTGATGGC
CAGGAGATCACTGCCACCGCCGTGCTGGCCCCCTGGCCTAGGCCACCCCCCAGGAGATTCAGCCCTCCC
AGGAGAATGTTGCCACCACCGCCTATGTGGCGCAGGTCTCCCCACGGATGAGGAGAAGTCCCGCTCC
CCGAGGCGCAGTCCCCCGTGCGCCGAGATCACGGTCCCCGGCCGCCGCCACAGGAGCCGCTCC
AGCTCCAACCTCTCCCGA
ACGCGTACGCGGCCGCTCGAG - GFP Tag - GTTTAAAC
```



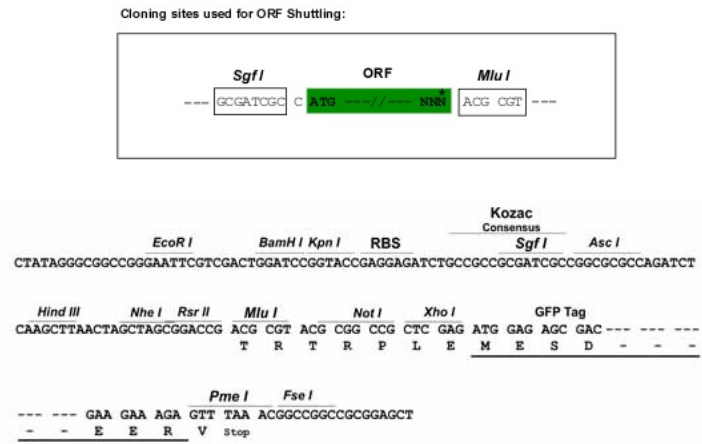
[View online »](#)

Protein Sequence: >Peptide sequence encoded by RG237159
 Blue=ORF Red=Cloning site Green=Tag(s)

MAPSPTRKRKDRSDEKSKDRSKDKGATKESSEKDRGRDKTRKRRSASSGSSSTRSRSSSTSSSGSSTSTG
 SSSGSSSSASSRSGSSSTRSSSSSSSSGSPSPSRRRHDNRSSRSKSKPPKRDEKERKRRSPSPKPT
 KVHIGRLTRNVTKDHIMEIFSTYGIKIMIDMPVERMHPLSKGYAYVEFENPDEAEKALKHMDGGQIDG
 QEITATAVLAPWPRPPRRFSPRRMLPPPPMWRSPRRRRSRSPRRRSPVRRRSRSPGRRRHSRS
 SSNSSR
 TRTRPLEMESDESGLPAMEIECRITGTLNGVEFELVGGEGTPEQGRMTNKMSTKGALTFSPYLLSHV
 MGYGFYHFGTYPYSGYENPFLHAINNGGYNTRIEKYEDGGVLHVSFSYRYEAGRVIGDFKVMGTGFPED
 SVIFTDKIIRSNAIVEHLHPMGDNDLDGSFTRTFSLRDGGYSSVVDSHMHFKSAIHPSILQNGGPMFA
 FRRVEEDHSNTELGIVEYQHAFKTPDADAGEERV

Restriction Sites: SgfI-MluI

Cloning Scheme:



ACCN: NM_001286626

ORF Size: 846 bp

OTI Disclaimer: The molecular sequence of this clone aligns with the gene accession number as a point of reference only. However, individual transcript sequences of the same gene can differ through naturally occurring variations (e.g. polymorphisms), each with its own valid existence. This clone is substantially in agreement with the reference, but a complete review of all prevailing variants is recommended prior to use. [More info](#)

OTI Annotation: This clone was engineered to express the complete ORF with an expression tag. Expression varies depending on the nature of the gene.

Components: The ORF clone is ion-exchange column purified and shipped in a 2D barcoded Matrix tube containing 10ug of transfection-ready, dried plasmid DNA (reconstitute with 100 ul of water).

RefSeq: [NM_001286626.2](#)

RefSeq Size: 2063 bp

RefSeq ORF: 849 bp

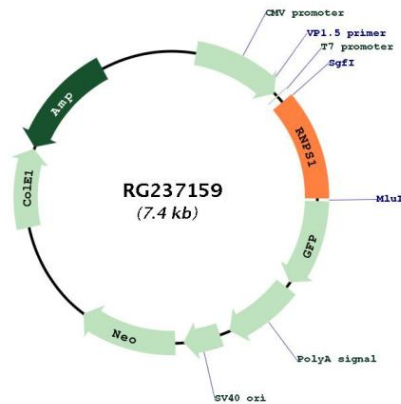
Locus ID: 10921
 UniProt ID: [Q15287](#)
 Cytogenetics: 16p13.3

Protein Families: Transcription Factors

MW: 32.2 kDa

Gene Summary: This gene encodes a protein that is part of a post-splicing multiprotein complex involved in both mRNA nuclear export and mRNA surveillance. mRNA surveillance detects exported mRNAs with truncated open reading frames and initiates nonsense-mediated mRNA decay (NMD). When translation ends upstream from the last exon-exon junction, this triggers NMD to degrade mRNAs containing premature stop codons. This protein binds to the mRNA and remains bound after nuclear export, acting as a nucleocytoplasmic shuttling protein. This protein contains many serine residues. Several transcript variants encoding different isoforms have been found for this gene. [provided by RefSeq, Nov 2013]

Product images:



Circular map for RG237159