

## Product datasheet for **RG237149**

### TRMT1 (TRMU) (NM\_001282783) Human Tagged ORF Clone

#### Product data:

Product Type:	Expression Plasmids
Product Name:	TRMT1 (TRMU) (NM_001282783) Human Tagged ORF Clone
Tag:	TurboGFP
Symbol:	TRMT1
Synonyms:	LCAL3; MTO2; MTU1; TRMT; TRMT1
Mammalian Cell Selection:	Neomycin
Vector:	pCMV6-AC-GFP (PS100010)
E. coli Selection:	Ampicillin (100 ug/mL)
ORF Nucleotide Sequence:	>RG237149 representing NM_001282783. Blue=ORF Red=Cloning site Green=Tag(s)

```
GCTCGTTTGTGAACCGTCAGAATTTTGTAAACGACTCACTATAGGGCGCCGGGAATTCGTCGACTG
GATCCGGTACCGAGGAGATCTGCCGCCGCGATCGCC
ATGCCATTGCCACAGGTCACTATGCAAGAACTTCCCTGGAAGATGAAGAAGTCTTTGAGCAGAAGCACG
TTAAGAAGCCCGAAGGGCTTTTCAGAAATCGGTTTGAAGTTAGAAATGGTTTCCAGGATGCCCTGAGG
AGAACCATCTCCCTCTGGGGGATTAACGAAAGAGTTTGTAAAGAAAATCGCTGCTGAGAATAGACTT
CATCATGTGCTTCAGAAGAAAGAGAGCATGGGCATGTGTTTCATCGGGAAGAGGAATTTGAACATTTT
CTTCTTCAGTATCTGCAGCCTCGACCTGGTCACTTTATTTCCATAGAAGACAATAAGGTTCTGGGAACA
CATAAAGTTGGTTCCTGTATACCTTGGGCCAGAGAGCAAACATAGGTGGCCTGAGAGAGCCCTGGTAC
GTGGTGGAGAAGGACAGCGTCAAGGGTGACGTGTTTGTGGCCCCCGGACAGACCACCCAGCCCTGTAC
AGGGACCTGTGAGGACCAGCCGCTGCACTGGATTGCGGAGGAGCCTCCCGCAGCACTGGTCCGGGAC
AAGATGATGGAGTGCCACTTCCGATTCCGCCACCAGATGGCACTAGTGCCTGTGTGCTGACCCTCAAT
CAAGATGGCACCCTGTGGGTGACAGCTGTGAGGCTGTGCGTGCCTTGGCACAGGACAGTTTGTGTG
TTCTACAAGGGGGACGAGTGCCTGGGCAGCGGGAAGATCTGCGGCTGGGGCCGTCTGCCTACACGCTC
CAGAAGGGCCAGCGCAGAGCTGGGATGGCCACTGAGAGCCCCAGTGACAGCCCAGAAGATGGTCCAGGC
CTGAGTCCCTTGCTC
ACGCGTACGCGGCCGCTCGAG - GFP Tag - GTTTAAAC
```



[View online »](#)

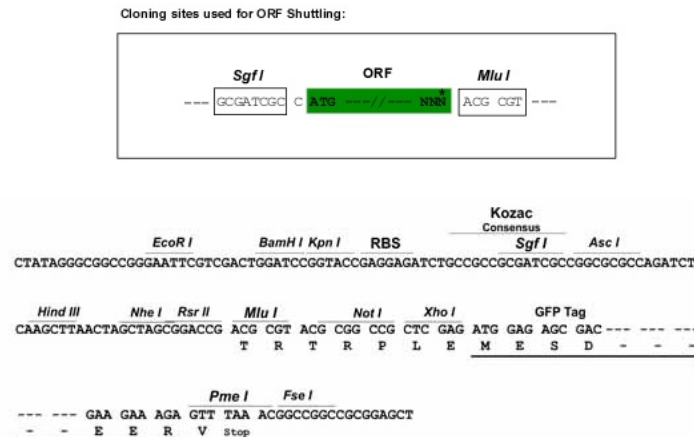
**Protein Sequence:** >Peptide sequence encoded by RG237149  
 Blue=ORF Red=Cloning site Green=Tag(s)

MPLPQVTMQELPWKMKKSLSRSTLRSPKGFSEIGLKLEMVSQDALRRTIFPLGGLTKEFVKKIAAENRL  
 HHVLQKKE SMG MCF IGKRNFEHLLQYLQPRPGHFISIEDNKVLGTHKGWFLYTLGQRANIGGLREPWY  
 VVEKDSVKGDV F VAPRTDHPAL YRDL LRTSRVHWIAEEPPAAL VRDKMMECHFRFRHQMALVPCVLT LN  
 QDGT VVWTVAVQAVRALATGQFAV FYKGDDECLGSGKILRLGPSAYTLQKGQRRAGMATESPSPDSPEDGPG  
 LSPLL

TRTRPLEMESDESGLPAMEIECRITGTLNGVEFELVGGGEGTPEQGRMTNKMKSTKGALTFSPYLLSHV  
 MGYGFYHFGTYP SGYENPFLHAINNGGYNTRIEKYEDGGVLHVSFSYRYEAGRVIGDFKVMGTGFPEP  
 SVIFTDKIIRSNATVEHLHPMGDNDLDGSFTRTFSLRDGGYSSVVD SHMHFKSAIHPSILQNGGPMFA  
 FRRVEEDHSNTELGIVEYQHAFKTPDADAGEERV

**Restriction Sites:** SgfI-MluI

**Cloning Scheme:**



**ACCN:** NM\_001282783

**ORF Size:** 843 bp

**OTI Disclaimer:** The molecular sequence of this clone aligns with the gene accession number as a point of reference only. However, individual transcript sequences of the same gene can differ through naturally occurring variations (e.g. polymorphisms), each with its own valid existence. This clone is substantially in agreement with the reference, but a complete review of all prevailing variants is recommended prior to use. [More info](#)

**OTI Annotation:** This clone was engineered to express the complete ORF with an expression tag. Expression varies depending on the nature of the gene.

**Components:** The ORF clone is ion-exchange column purified and shipped in a 2D barcoded Matrix tube containing 10ug of transfection-ready, dried plasmid DNA (reconstitute with 100 ul of water).

**RefSeq:** [NM\\_001282783.2](#)

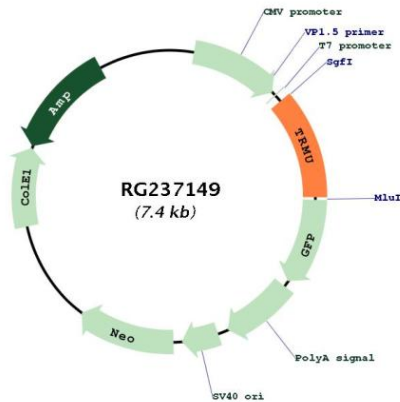
**RefSeq Size:** 1808 bp

**RefSeq ORF:** 846 bp

**Locus ID:** 55687  
**UniProt ID:** [O75648](#)  
**Cytogenetics:** 22q13.31  
**MW:** 32.2 kDa

**Gene Summary:** This nuclear gene encodes a mitochondrial tRNA-modifying enzyme. The encoded protein catalyzes the 2-thiolation of uridine on the wobble positions of tRNA(Lys), tRNA(Glu), and tRNA(Gln), resulting in the formation of 5-taurinomethyl-2-thiouridine moieties. Mutations in this gene may cause transient infantile liver failure. Polymorphisms in this gene may also influence the severity of deafness caused by mitochondrial 12S ribosomal RNA mutations. Alternative splicing results in multiple transcript variants. [provided by RefSeq, Sep 2013]

### Product images:



Circular map for RG237149