

Product datasheet for **RG237145**

EEF1D (NM_001289950) Human Tagged ORF Clone

Product data:

Product Type:	Expression Plasmids
Product Name:	EEF1D (NM_001289950) Human Tagged ORF Clone
Tag:	TurboGFP
Symbol:	EEF1D
Synonyms:	EF-1D; EF1D; FP1047
Mammalian Cell Selection:	Neomycin
Vector:	pCMV6-AC-GFP (PS100010)
E. coli Selection:	Ampicillin (100 ug/mL)



[View online »](#)

ORF Nucleotide Sequence:

>RG237145 representing NM_001289950.
 Blue=ORF Red=Cloning site Green=Tag(s)

```
GCTCGTTTAGTGAACCGTCAGAATTTTGTAAACGACTCACTATAGGGCGGCCGGGAATTCGTGACTG
GATCCGGTACCGAGGAGATCTGCCGCCACGATCGCC
ATGAGGAGCGGGAAGGCCTCTGCACCCCTGGAGACCGTGTGGGAAGACAAGCACAAGTATGAGGAGGCC
GAGCGCGCTTCTACGAACACGAGGCCACACAGCGGCCCGCTCCGCCACGAGCTGCCAGCCGAGGGG
CCAGCCATGAATGGGCCCGGCCAGGACGACCCCTGAGGACGCTGATGAGGCGGAAGCCCTGACGGCGGC
AGCAGGCGTGATCCCAGGAAGAGCCAGGACAGCAGGAAGCCCTGCAGAAAAAGGGAAGCGCTCCCCC
AAGAGCGGGCTCGGCCCGCGGACTGGCCCTCTGGCCCTCTCGGCCGAACGTGTGTGGCTGGACAAG
TCACTTTTCGACCAGGCAGAGAGCTCTACCGCCAGAAGCTGGCAGATGTGGCTGCCAGGCAGCCTGG
CCTCTGCCTTGGCCCTTGGGGTCTCTGCACCCATGAAACCAGGTGGCCTGCCACCACGTGACCTGG
GGGATCTGGGTCAACAAGTCTCTTCGACCAGGCTGAGCGGGCCTTCGTGGAGTGGTCTCAGGCCCTG
TTGCTGGCCCCGAGGGCAGCCGAGGCAGGGGACTCCCAACACAGGCCAGCAGGTGGCCGTCCCCGAC
CTGGCCACCAGCCAGCCACCGGTCAATGGCCAGCCCCGCTGGGCAGCCTGCAGGCAGTGGTTCGG
GAGGTGTGGCTGGAGAAGCCCGTATGATGCAGCCGAGAGGGGCTTCTACGAGGCCCTGTTTGAGGGC
CATCCCCAGGGAAGGTGCGCCTGCAAGAGCGAGCCGGCCTGGCCGAGGGTGCCCGGGGGCCGAGA
GACCGGGGGGGCCGAACATCTTAGGGAACAAGCGGGCCGGGCTGCGACGGGCCGATGGGGAGGCCCCC
TCTGCCTTGCCTACTGTTACTTCTGCAGAAGGATGCAGAGGCCCTGGCTCAGCAAGCTGCCTAC
GACAGCGCCGAGTGCCGCCACCACGCTGCCGAGGCCCTGCGTGTGGCCTGGTGCCTCGAAGCTGCCTC
CTGTCTCACCGACCCGGTCTCGGTCTGGCCTGTCCGTGTCCAGCCTGAGACCCAACAGAAAAATGGCT
ACAAACTTCTAGCACATGAGAAGATCTGGTTCGACAAGTTCAAATATGACGACGCAGAAAGGAGATTC
TACGAGCAGATGAACGGCCTGTGGCAGGTGCCCTCCCGCCAGGAGAACGGCGCCAGCGTGATCTCCGT
GACATTGCGAGAGCCAGAGAGAACATCCAGAAATCCCTGGCTGGAAGCTCAGGCCCGGGGCTCCAGC
GGCACCAGCGGAGACCACGGTGAGCTCGTCCGATTGCCAGTCTGGAAGTGGAGAACCAGAGTCTG
CGTGGCGTGGTACAGGAGCTGCAGCAGGCCATCTCCAAGCTGGAGGCCGGCTGAACGTGCTGGAGAAG
AGCTCGCCTGGCCACCGGCCACGGCCCCACAGACCAGCAGTATCTCCCATGCGCCAAGTGGAGCCC
CCAGCCAAGAAGCCAGCCACACCAGCAGAGGATGACGAGGATGATGACATTGACCTGTTTGGCAGTGAC
AATGAGGAGGAGACAAGGAGGGCGCACAGCTGCGGGAGGAGCGGCTACGGCAGTACGCGGAGAAGAAG
GCCAAGAAGCCTGCACTGGTGGCCAAGTCTCCATCCTGCTGGATGTCAAGCCTTGGGATGATGAGACG
GACATGGCCCAGCTGGAGCCTGTGTGCGCTCTATCCAGCTGGACGGGCTGGTCTGGGGGCTTCCAAG
CTGGTGCCTGGGCTACGGTATCCGGAAGCTACAGATTCAAGTGTGTGGTGGAGGACGACAAGGTGGGG
ACAGACTTGCTGGAGGAGGAGATCACCAAGTTTGGAGGACAGTGCAGAGTGTGCATATCGCAGCTTTC
AACAAAGATC
ACCGGTACGCGGCCGCTCGAG - GFP Tag - GTTTAAAC
```

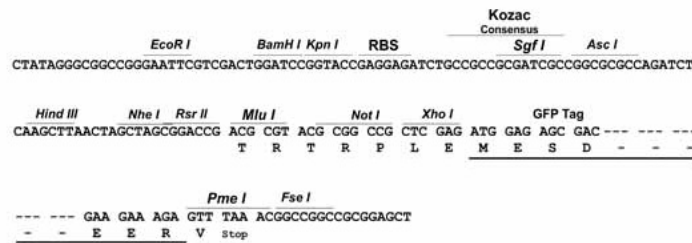
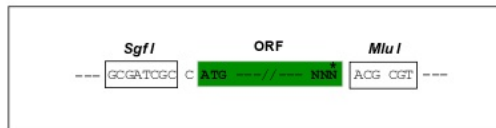
Protein Sequence: >Peptide sequence encoded by RG237145
 Blue=ORF Red=Cloning site Green=Tag(s)

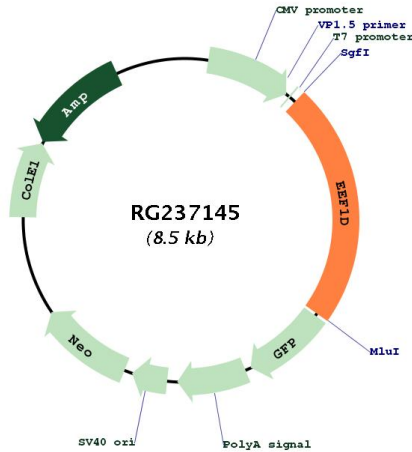
MRSKGASCTLETVWEDKHKYEEAERRFYEHEATQAAASAQQLPAEGPAMNGPGQDDPEDADEAEAPDGG
 SRRDPRKSQDSRKPLQKKRKRSPKSGLGPADLALLGLSAERVWLDKSLFDQAESSYRQKLADVAAQAAW
 PPALAPWGLCTHGNQVACHHVTWGIWVNKSSFDAQERAFVEWSQALLLAPEGSRRTGTPNTGQQVAVPD
 LAHQSPSPVNGQPPLGSLQALVREWLEKPRYDAAERGFYEALFDGHPGKVRLLQERAGLAEGARRGRR
 DRRGRNILLGNKRAGLRRADGEAPSAIPYCYFLQKDAEAPWLSKPAYDSAECRHHAAEALRVAWCLEAAS
 LSHRPGPRSGLSVSSLRPNRKMATNFLAHEKIWFDFKYDDAERRFYEQMNGPVAGASRQENGASVILR
 DIARARENIQKSLAGSSGPGASSGTSGDHGELVVRASLEVENQSLRGVVQELQQAI SKLEARLNVLEK
 SSPGHRATAPQTQHVSPMRQVEPPAKKPATPAEDDEDDIDLFGSDNEEDKEAAQLREERLRQYAEKK
 AKKPALVAKSSILLDVKPWDETDMAQLEACVRSIQLDGLVWGASKLVPVGYGIRKLIQICVVEDDKVG
 TDLEEEITKFEHVQSVDIAAFNKI
 TRTRPLEMESDEGLPAMEIECRITGTLNGVEFELVGGEGTPEQGRMTNKMSTKGALTFSPYLLSHV
 MGYGFYHFGTYPSTYENPFLHAINNGGYTNTRIEKYEDGGVLHVSFSYRYEAGRVIGDFKVMGTGFPED
 SVIFTDKIIRS NATVEHLHPMGDNDLDGSFTRTFLRDGGYYSSVVD SHMHFKSAIHP SILQNGGPMFA
 FRRVEEDHSNTELGIVEYQHAFKTPDADAGEERV

Restriction Sites: SgfI-MluI

Cloning Scheme:

Cloning sites used for ORF Shuttling:



Plasmid Map:


ACCN:	NM_001289950
ORF Size:	1941 bp
OTI Disclaimer:	The molecular sequence of this clone aligns with the gene accession number as a point of reference only. However, individual transcript sequences of the same gene can differ through naturally occurring variations (e.g. polymorphisms), each with its own valid existence. This clone is substantially in agreement with the reference, but a complete review of all prevailing variants is recommended prior to use. More info
OTI Annotation:	This clone was engineered to express the complete ORF with an expression tag. Expression varies depending on the nature of the gene.
Components:	The ORF clone is ion-exchange column purified and shipped in a 2D barcoded Matrix tube containing 10ug of transfection-ready, dried plasmid DNA (reconstitute with 100 ul of water).
RefSeq:	NM_001289950.1 , NM_001289950.2 , NP_001276879.1
RefSeq Size:	1273 bp
RefSeq ORF:	846 bp
Locus ID:	1936
UniProt ID:	P29692
Cytogenetics:	8q24.3
MW:	71.4 kDa

Gene Summary:

This gene encodes a subunit of the elongation factor-1 complex, which is responsible for the enzymatic delivery of aminoacyl tRNAs to the ribosome. This subunit, delta, functions as guanine nucleotide exchange factor. It is reported that following HIV-1 infection, this subunit interacts with HIV-1 Tat. This interaction results in repression of translation of host cell proteins and enhanced translation of viral proteins. Several alternatively spliced transcript variants encoding multiple isoforms have been found for this gene. Related pseudogenes have been defined on chromosomes 1, 6, 7, 9, 11, 13, 17, 19.[provided by RefSeq, Aug 2010]