

Product datasheet for **RG237143**

DACT2 (NM_001286351) Human Tagged ORF Clone

Product data:

Product Type:	Expression Plasmids
Product Name:	DACT2 (NM_001286351) Human Tagged ORF Clone
Tag:	TurboGFP
Symbol:	DACT2
Synonyms:	bA503C24.7; C6orf116; DAPPER2; DPR2
Mammalian Cell Selection:	Neomycin
Vector:	pCMV6-AC-GFP (PS100010)
E. coli Selection:	Ampicillin (100 ug/mL)
ORF Nucleotide Sequence:	>RG237143 representing NM_001286351. Blue=ORF Red=Cloning site Green=Tag(s)

```
GCTCGTTTAGTGAACCGTCAGAATTTTGTAAACGACTCACTATAGGGCGGCCGGGAATTCGTCGACTG
GATCCGGTACCGAGGAGATCTGCCGCCGCGATCGCC
ATGTGGACGCGGGCGGACCCCGGGTCCGCGGGCTGGGACCGCGTAGGTTGGGCGGAGGTTGCGC
GCGGGCTTCGCGGGGCTGCAGGAGCTGCAGGGGCTGCGAGCCACGCAGCAGGAGCGGTTACGGGGCGCC
CTGGCCCTGCAGCCCCCGCCGCGCCGCGCCCTGCGGCCCCACGGCCTCCACGGCCCCGAGCAG
CAGCTGGAGGCGGCGCTGGCCGCGCTGCAGGAGCAGCTGTCCCGGCTGAGACAACAGGACATCGGCCTG
AAGACCCACCTGGACCAGCTGGACCTGCAGATTAGCAAGCTGCAGCTGGATGTGGGCACAGCCTCAGGG
GAGGCCCTGGACAGCGACAGCAGGCCAGCTCAGGCTTTTACGAGATGAGCGACGGTGGATCCTGCTCC
CTGTCCACGTCTGTGCCTCCGTCTGCAGTGACCACATCTCTCCCTCGCTGGGCAGTTTGTTCCTGTG
GCCAGGCCACAAAGGCCAGGCCAGCATGGGGGACTGGAGGCCCGGTCGGTTGATGAGACTACTGTG
CCAGCGTGGAGACCCAGGCTACCGAGGAGGGCGCCAGGCCCCAGGGAGCGTGGAGGATGCAGGCCAG
CCGTGGGGCACATTCTGGCCAGGCCTGTGTCTACAGAGCTGTGCAATGCTCCAGGTGAACCTTGACATG
CATGCTCCGCCTGCAGGCTGCACCTCCAGTTCAGTACAGGTGTAGGTTCTGTTTGAGAGGAAAGTGT
GGCCTCTGTGGCTGTCAGCTCCCTTTCTGCTCAGTGAACACAAGTTCAAAGACAAAATCATCAGGAAT
TCAAGACAGCAA
ACGCGTACGCGGCCGCTCGAG - GFP Tag - GTTTAAAC
```



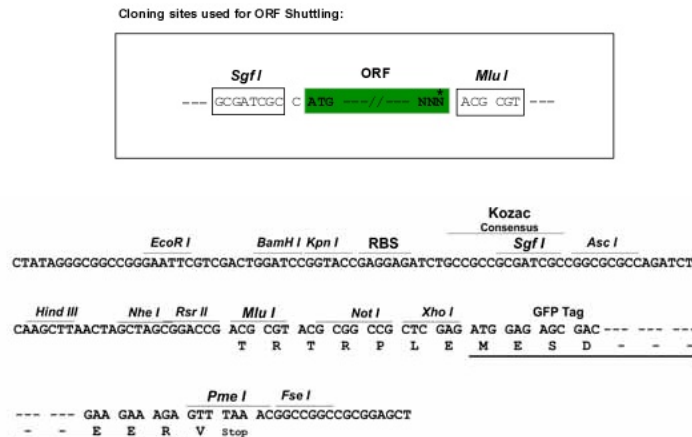
[View online »](#)

Protein Sequence: >Peptide sequence encoded by RG237143
 Blue=ORF Red=Cloning site Green=Tag(s)

MWTPGGPPGSAGWDRRLGARLRAAFAGLQELQGLRATQQERVRGALALQPPPAPAAPCGPHLHGPEQ
 QLEAALAEALQELSRLRQQDIGLKTHLDQLDLQISKLQLDVGATASGEALDSDSRPSSGFYEMSDGGSCS
 LSTSCASVCSDDHISPLGSLLPVAQAHKARPSMGDWRPRSVDETTVPAWRPQATEEGARPPGSVEDAGQ
 PWGTFWPRPVSTELCNAPGELDMHAPPAGCTSSSLTGVGSGLRGKCGCLCGCQLPFCVNTSSKTKSSGI
 SRQQ
 TRTRPLEMESDESGLPAMEIECRITGTLNGVEFELVGGGEGTPEQGRMTNKMSTKGALTFSPYLLSHV
 MGYGFYHFGTYPSTYENPFLHAINNGGYNTRIEKYEDGGVLHVSFSYRYEAGRVIGDFKVMGTGFPEP
 SVIFTDKIIRSNATVEHLHPMGDNDLDGSFTRTFSLRDGGYSSVVDSHMHFKSAIHPSILQNGGPMFA
 FRRVEEDHSNTELGIVEYQHAFKTPDADAGEERV

Restriction Sites: SgfI-MluI

Cloning Scheme:



ACCN: NM_001286351

ORF Size: 840 bp

OTI Disclaimer: The molecular sequence of this clone aligns with the gene accession number as a point of reference only. However, individual transcript sequences of the same gene can differ through naturally occurring variations (e.g. polymorphisms), each with its own valid existence. This clone is substantially in agreement with the reference, but a complete review of all prevailing variants is recommended prior to use. [More info](#)

OTI Annotation: This clone was engineered to express the complete ORF with an expression tag. Expression varies depending on the nature of the gene.

Components: The ORF clone is ion-exchange column purified and shipped in a 2D barcoded Matrix tube containing 10ug of transfection-ready, dried plasmid DNA (reconstitute with 100 ul of water).

RefSeq: [NM_001286351.2](#)

RefSeq Size: 2043 bp

RefSeq ORF: 843 bp

Locus ID: 168002

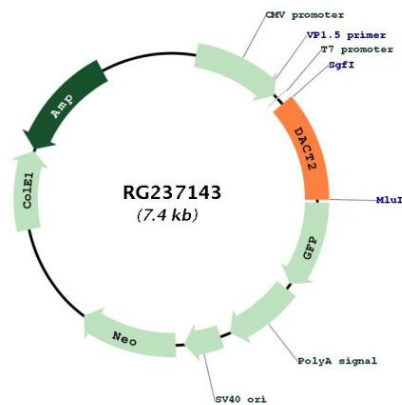
UniProt ID: [Q5SW24](#)

Cytogenetics: 6q27

MW: 29.8 kDa

Gene Summary: Involved in regulation of intracellular signaling pathways during development. Negatively regulates the Nodal signaling pathway, possibly by promoting the lysosomal degradation of Nodal receptors, such as TGFBR1. May be involved in control of the morphogenetic behavior of kidney ureteric bud cells by keeping cells epithelial and restraining their mesenchymal character. May play an inhibitory role in the re-epithelialization of skin wounds by attenuating TGF-beta signaling (By similarity).[UniProtKB/Swiss-Prot Function]

Product images:



Circular map for RG237143