

## Product datasheet for **RG237142**

### **AZI2 (NM\_001271650) Human Tagged ORF Clone**

#### Product data:

Product Type:	Expression Plasmids
Product Name:	AZI2 (NM_001271650) Human Tagged ORF Clone
Tag:	TurboGFP
Symbol:	AZI2
Synonyms:	AZ2; NAP1; TILP
Mammalian Cell Selection:	Neomycin
Vector:	pCMV6-AC-GFP (PS100010)
E. coli Selection:	Ampicillin (100 ug/mL)
ORF Nucleotide Sequence:	>RG237142 representing NM_001271650. Blue=ORF Red=Cloning site Green=Tag(s)

```
GCTCGTTTAGTGAACCGTCAGAATTTTGTAAACGACTCACTATAGGGCGGCCGGGAATTCGTCGACTG
GATCCGGTACCGAGGAGATCTGCCGCCGCGATCGCC
ATGAATAAAGACAACCTCTGAATCTTTGAAAGTATTGAATGAGCAGCTACAATCTAAAGAAGTAGAACTC
CTCCAGCTGAGGACAGAGGTGGAACTCAGCAGGTGATGAGGAATTTAAATCCACCTTCATCAAAGTGG
GAGGTGGAAAAGTTGAGCTGTGACCTGAAGATCCATGGTTTGAACAAGAGCTGGAAGTATGAGGAAA
GAATGTAGCGATCTCAAATAGAAGTACAGAAAGCCAAACAAACGGATCCATATCAGGAAGACAATCTG
AAGAGCAGAGATCTCAAAAATAAGCATTTCAGTGATAATATGCAGCATGCATACTGGGAAGTGAAG
AGAGAAATGTCTAATTTACATCTGGTACTCAAGTACAAGCTGAAGTACTAAGAAAAGTAAAACCTCA
ACTGCAATCAAGAAAGCCTGTGCCCTGTAGGATGCAGTGAAGACCTTGAAGAGACAGCACAAAAGTGG
CACTTGATGAATTTTACTGCAACATACACAAGACATCCCCCTCTCTTACCAAATGGCAAAGCTCTTTGT
CATACCACATCTTCCCCTTACCAGGAGATGTAAGGTTTTATCAGAGAAAGCAATCCTCCAATCATGG
ACAGACAATGAGAGATCCATTCTAATGATGGTACATGCTTTCAGGAACACAGTTCTTATGGCAGAAAT
TCTCTGGAAGACAATTCCTGGTATTTCCAAGTCTCCTAAATCAAGTGAAGACAGCATTTGGGAAAAGT
AAAATAAACTTTGCCTTACCAACCTTCCACCCTGCATTACTTGGATCAACATAATCAGAAGTGG
CTTTATAAGAAT
ACGCGTACGCGGCCGCTCGAG - GFP Tag - GTTTAAAC
```



[View online »](#)

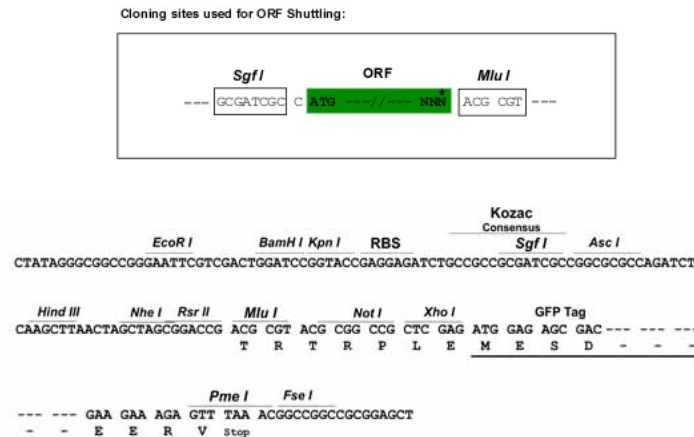
**Protein Sequence:** >Peptide sequence encoded by RG237142  
 Blue=ORF Red=Cloning site Green=Tag(s)

MNKDNSESLKVLNEQLQSKEVELLQLRTEVETQQVMRNLNPPSSNWEVEKLSCDLKIHGLEQELELMRK  
 ECSDLKIELQKAKQTDPTYQEDNLKSRDLQKLSISSDNMQHAYWELKREMSNLHLVTQVQAELLRKLKTS  
 TAIKKACAPVGCSEDLGRDSTKLHLMNFTATYTRHPPLLPNGKALCHTTSSPLPGDVKVLSEKAILQSW  
 TDNERSIPNDGTCFQEHSSYGRNSLEDNSWVFPSPKSSSETAFGETKTKTLPLPNLPLHYLDQHNQNC  
 LYKN

TRTRPLEMESDESGLPAMEIECRITGTLNGVEFELVGGGEGTPEQGRMTNKMKSTKGALTFSPYLLSHV  
 MGYGFYHFGTYPYSGYENPFLHAINNGGYNTRIEKYEDGGVLHVSFSYRYEAGRVIGDFKVMGTGFPEP  
 SVIFTDKIIRSNAIVEHLHPMGDNDLDGSFTRTFSLRDGGYSSVVDSHMHFKSAIHPSILQNGGPMFA  
 FRRVEEDHSNTELGIVEYQHAFKTPDADAGEERV

**Restriction Sites:** SgfI-MluI

**Cloning Scheme:**



**ACCN:** NM\_001271650

**ORF Size:** 840 bp

**OTI Disclaimer:** The molecular sequence of this clone aligns with the gene accession number as a point of reference only. However, individual transcript sequences of the same gene can differ through naturally occurring variations (e.g. polymorphisms), each with its own valid existence. This clone is substantially in agreement with the reference, but a complete review of all prevailing variants is recommended prior to use. [More info](#)

**OTI Annotation:** This clone was engineered to express the complete ORF with an expression tag. Expression varies depending on the nature of the gene.

**Components:** The ORF clone is ion-exchange column purified and shipped in a 2D barcoded Matrix tube containing 10ug of transfection-ready, dried plasmid DNA (reconstitute with 100 ul of water).

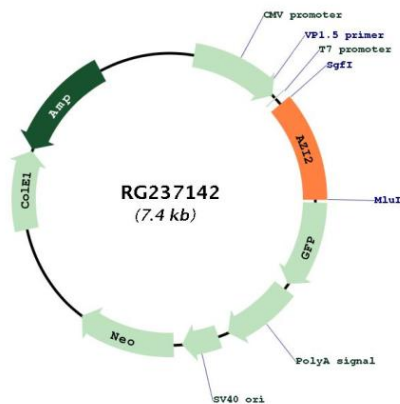
**RefSeq:** [NM\\_001271650.2](#)

**RefSeq Size:** 3474 bp

**RefSeq ORF:** 843 bp

**Locus ID:** 64343  
**Cytogenetics:** 3p24.1  
**Protein Pathways:** RIG-I-like receptor signaling pathway  
**MW:** 32.4 kDa  
**Gene Summary:** AZI2, or NAP1, contributes to the activation of NFkB (see MIM 164011)-dependent gene expression by activating IKK-related kinases, such as NAK (TBK1; MIM 604834) (Fujita et al., 2003 [PubMed 14560022]).[supplied by OMIM, Mar 2008]

**Product images:**



Circular map for RG237142