

Product datasheet for **RG237133**

FRG2 (NM_001286820) Human Tagged ORF Clone

Product data:

Product Type:	Expression Plasmids
Product Name:	FRG2 (NM_001286820) Human Tagged ORF Clone
Tag:	TurboGFP
Symbol:	FRG2
Synonyms:	FRG2A
Mammalian Cell Selection:	Neomycin
Vector:	pCMV6-AC-GFP (PS100010)
E. coli Selection:	Ampicillin (100 ug/mL)
ORF Nucleotide Sequence:	>RG237133 representing NM_001286820. Blue=ORF Red=Cloning site Green=Tag(s)

```
GCTCGTTTAGTGAACCGTCAGAATTTTGTAAATACGACTCACTATAGGGCGCCGGGAATTCGTCGACTG
GATCCGGTACCGAGGAGATCTGCCGCCGCGATCGCC
ATGGGAAAGGGAAATGAAGACTCCGATCTCCACTGCTCCTCCATCCAGTGCTCCACTGACCAGCCCCCT
TTCCAACAGATCTCCTTTACAGAAAAGGGCTCAGATGAGAAGAAACCATTCAAAGAAAAAGGCAAGACC
GCCTTCTCCATTCCAGTGAGAAGCACATACAAAGGCAAGCAGGATCGGAGCCCAATCCAAACAAGGAG
AATTCTGAGGAAACCAAGCTCAAGGCCGGGAACAGCACTGCTGGATCAGAACAGAGTCCAGCTCATAT
CGGGAAAAGTGCAGGAAAAGAAAATGAGTTCCAAGGACAGCTGCCAAGACACAGCAGGGAAGTGTCCA
GAAAAGGAGTGCAGCTTGTGATTGAATAAAAAATCAAGATCCTCCACTGCTGTGCACAACAGTGAATC
CAGGAGACCTGTGATGCCACCATAGGGGACATTCAGGGCTTGCACTGGGCACAGCAAGCGGCATAGG
TCTCGGGCCCTAGGAGTCCAAACACCGTCAATTCGAAAAGCTTGGTGACTTCTGTGCGAGCTATGTCA
GAGGCTGTTTATCAAGACCTAGCCAGGTGTGGGCACAGCAGATCCATTCTCCACTTACCTGTGAGCAG
CTGACACTGCTCACTCGGCTCCGGGGCCCTCTGTGTGCCAGGTGCAGACCTTGTATTCCATGGCCACC
CAGGCAGCTTATGTCTTCCCTGCTGAGAGCTGGCTTGCCAGCCACACTGCCAGTCTGGGGAATCA
GCCCTGGATAGAGAAGCCATCCCTTCCCTGGGCAGGAGATAACTGAGACTGTGAGTGGATCAGATGAG
GCTAAGCTG
ACGCGTACGCGGCCGCTCGAG - GFP Tag - GTTTAAAC
```



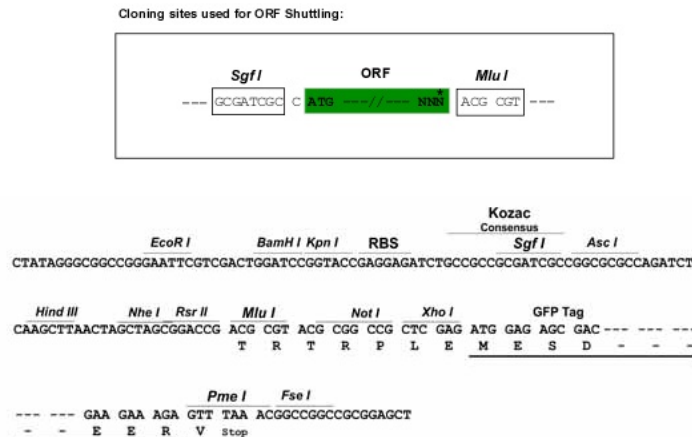
[View online »](#)

Protein Sequence: >Peptide sequence encoded by RG237133
 Blue=ORF Red=Cloning site Green=Tag(s)

MGKGNEDSDLHCSSIQCSTDQPPFQQISFTEKGSDEKKPFKEKGTAFSHSSEKHIQRQAGSEPNPNKE
 NSEETKLKAGNSTAGSEPESSSYRENCRKRMSSKDSCQDTAGNCPEKECSLNLNKKSRSTAVHNSEI
 QETCDAHHRGHSRACTGHSKRHRSRALGVQTPSIRKSLVTSVRAMSEAVYQDLAQVWAQQIHSPLTCEQ
 LTLTLRLRGLCAQVQTLYSMATQAAYVFPAESWLVPATLPGPGESALDREAHPFPQEITETVSGSDE
 AKL
 TRTRPLEMESDESGLPAMEIECRITGTLNGVEFELVGGEGTPEQGRMTNKMSTKGALTFSPYLLSHV
 MGYGFYHFGTYPSTYENPFLHAINNGGYNTRIEKYEDGGVLHVSFSYRYEAGRVIGDFKVMGTGFPEP
 SVIFTDKIIRSNAIVEHLHPMGDNDLDGSFTRTFSLRDGGYSSVVDSHMHFKSAIHPSILQNGGPMFA
 FRRVEEDHSNTELGIVEYQHAFKTPDADAGEERV

Restriction Sites: SgfI-MluI

Cloning Scheme:



ACCN: NM_001286820

ORF Size: 837 bp

OTI Disclaimer: The molecular sequence of this clone aligns with the gene accession number as a point of reference only. However, individual transcript sequences of the same gene can differ through naturally occurring variations (e.g. polymorphisms), each with its own valid existence. This clone is substantially in agreement with the reference, but a complete review of all prevailing variants is recommended prior to use. [More info](#)

OTI Annotation: This clone was engineered to express the complete ORF with an expression tag. Expression varies depending on the nature of the gene.

Components: The ORF clone is ion-exchange column purified and shipped in a 2D barcoded Matrix tube containing 10ug of transfection-ready, dried plasmid DNA (reconstitute with 100 ul of water).

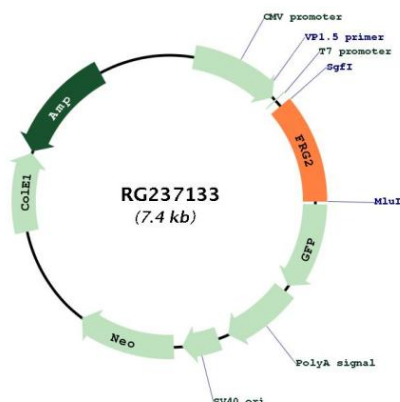
RefSeq: [NM_001286820.2](#)

RefSeq Size: 2087 bp

RefSeq ORF: 840 bp

Locus ID: 448831
 UniProt ID: [Q64ET8](#)
 Cytogenetics: 4q35.2
 MW: 31 kDa

Product images:



Circular map for RG237133