

Product datasheet for **RG237129**

PPIL6 (NM_001286360) Human Tagged ORF Clone

Product data:

Product Type:	Expression Plasmids
Product Name:	PPIL6 (NM_001286360) Human Tagged ORF Clone
Tag:	TurboGFP
Symbol:	PPIL6
Synonyms:	bA425D10.6; dj919F19.1; PPIase; RSPH12
Mammalian Cell Selection:	Neomycin
Vector:	pCMV6-AC-GFP (PS100010)
E. coli Selection:	Ampicillin (100 ug/mL)
ORF Nucleotide Sequence:	>RG237129 representing NM_001286360. Blue=ORF Red=Cloning site Green=Tag(s)

```
GCTCGTTTAGTGAACCGTCAGAATTTTGTAAACGACTCACTATAGGGCGGCCGGGAATTCGTCGACTG
GATCCGGTACCGAGGAGATCTGCCGCCGCGATCGCC
ATGGCAAGGCCGAGCCGTGCGGGCCCCGCACGCTAGGTGCGGCTCGCCGTCGCTGCCGGAGCGGCCG
CTGCAGGTGAAGGTGGTGGGCTCTTCAGCTGCCCAACTTTCAGATTGCGAAGAGCGCCGCTGAGGAA
CTCAAAAATGAAACCTGGGAATATTCTTCCTCTGTGATTTCTTTTGTAAATGGTCAGTTTCTGGGTGAT
GCATTGGATCTGCAGAAATGGGCCACGAGGTGTGGGATATAGTTGACATTAACCCTCTGCACTTTAT
GACGCACTCACTGAGGATTTTCCGCTAAGTTCTTAAGAGACACCAAGCATGATTTTCGTGTTTTGGAC
ATTTGTATTGATTCTTCCAATTGGAAGATTGATTTTTGAGCTATACTGTGATGTGTGCCAAAACA
TGTAATAATTTTCAGGCTTTGTGCACAGGAAAAGCAGGGTTTTCTCAACGTGGCATAAGACTACATTAC
AAAAATTCATTTTTCATCGAATAGTACAGAATGGCTGGATACAAGGAGGGGATATAGTGTATGAAAA
GGAGATAATGGAGAGTCGATTTATGGTCCAACATTTGAAGATGAAAACCTTTTCAGTTCCTCATAATAAA
AGAGGAGTACTTGAATGGCCAACAAAGCCGTCACAGCAACGGGTACAAATCTATACACTGCAA
GCAACTCCTTATCTAGATAGAAAATTTGTGGCTTTTGGGCAACTGATTGAAGGAACAGAAGTGCTTAAA
CAACTAGAATTAGTTC AACACAGAATGAAAGACCAATACATATGTGTAGAATTACTGACAGTGGAGAT
CCTTATGCT
ACGCGTACGCGGCCGCTCGAG - GFP Tag - GTTTAAAC
```



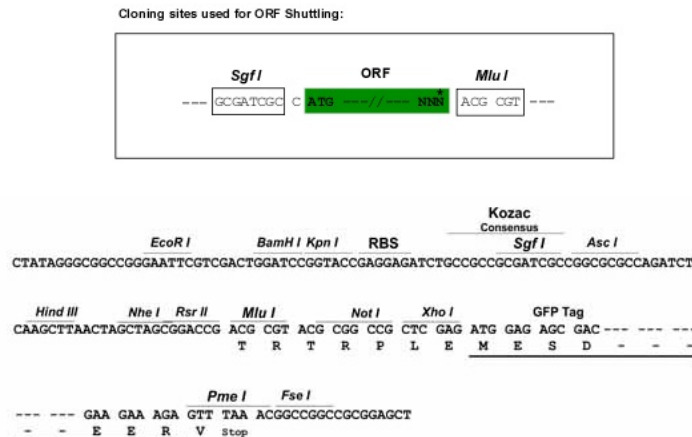
[View online »](#)

Protein Sequence: >Peptide sequence encoded by RG237129
 Blue=ORF Red=Cloning site Green=Tag(s)

MARPQPCGPPHARCSPSLPERPLQVKVVGLFSCPWFQIAKSAEELKNETWEYSSSVISFVNGQFLGD
 ALDLQKWAHEVWDIVDIKPSALYDALTEDFS AKFLRDTKHDFVFLDICIDSSPIGRILIFELYCDVCPKT
 CKNFQVLCTGKAGFSQRGIRLHYKNSIFHRIVQNGWIQGGDIVYKGDNGESIYGPTFEDENFSVPHNK
 RGVLG MANKGRHSNGSQFYITLQATPYLDRKFVAFGQLIEGTEVLKQLELVPTQNERPIHMCRTDSDG
 PYA
 TRTRPLEMESDESGLPAMEIECRITGTLNGVEFELVGGGEGTPEQGRMTNKMKSTKGALTFSPYLLSHV
 MGYGFYHFGTYPSTYENPFLHAINNGGYNTRIEKYEDGGVLHVSFSYRYEAGRVIGDFKVMGTGFPEP
 SVIFTDKIIRSNATVEHLHPMGDNDLDGSGFTRTFSLRDGGYSSVVD SHMHFKSAIHPSILQNGGPMFA
 FRRVEEDHSNTELGIVEYQHAFKTPDADAGEERV

Restriction Sites: SgfI-MluI

Cloning Scheme:



ACCN: NM_001286360

ORF Size: 837 bp

OTI Disclaimer: The molecular sequence of this clone aligns with the gene accession number as a point of reference only. However, individual transcript sequences of the same gene can differ through naturally occurring variations (e.g. polymorphisms), each with its own valid existence. This clone is substantially in agreement with the reference, but a complete review of all prevailing variants is recommended prior to use. [More info](#)

OTI Annotation: This clone was engineered to express the complete ORF with an expression tag. Expression varies depending on the nature of the gene.

Components: The ORF clone is ion-exchange column purified and shipped in a 2D barcoded Matrix tube containing 10ug of transfection-ready, dried plasmid DNA (reconstitute with 100 ul of water).

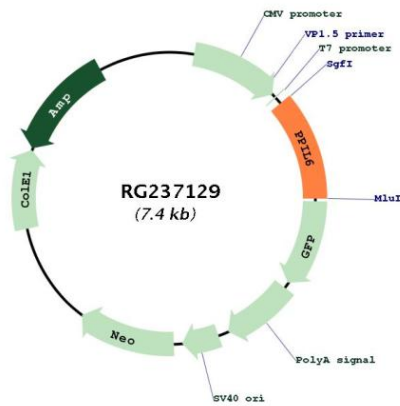
RefSeq: [NM_001286360.1](#), [NP_001273289.1](#)

RefSeq Size: 4049 bp

RefSeq ORF: 840 bp

Locus ID: 285755
UniProt ID: [Q8IXY8](#)
Cytogenetics: 6q21
MW: 31.3 kDa
Gene Summary: Probable inactive PPIase with no peptidyl-prolyl cis-trans isomerase activity.[UniProtKB/Swiss-Prot Function]

Product images:



Circular map for RG237129