

Product datasheet for **RG237118**

SH3GL3 (NM_001301108) Human Tagged ORF Clone

Product data:

Product Type:	Expression Plasmids
Product Name:	SH3GL3 (NM_001301108) Human Tagged ORF Clone
Tag:	TurboGFP
Symbol:	SH3GL3
Synonyms:	CNSA3; EEN-B2; HsT19371; SH3D2C; SH3P13
Mammalian Cell Selection:	Neomycin
Vector:	pCMV6-AC-GFP (PS100010)
E. coli Selection:	Ampicillin (100 ug/mL)
ORF Nucleotide Sequence:	>RG237118 representing NM_001301108. Blue=ORF Red=Cloning site Green=Tag(s)

```
GCTCGTTTAGTGAACCGTCAGAATTTTGTAAACGACTCACTATAGGGCGCCGGGAATTCGTCGACTG
GATCCGGTACCGAGGAGATCTGCCGCCGCGATCGCC
ATGCTGAACACTGTGTCGAAGATCCGAGGGCAGGTGAAGACCACAGGATACCCGCAGACGGAAGGCTTG
CTGGGGGACTGTATGCTGAAATACGGGAAGGAGCTCGGGGAAGACTCCACCTTTGGCAATGCATTGATA
GAAGTTGGTGAATCCATGAAGCTAATGGCTGAGGTGAAAGACTCTCTTGATTAATGTAAGCAAACCTG
TTTATTGATCCACTTCAGTTACTACAAGATAAAGATTTAAAGAGATCGGGCATCACCTGAAAAAGCTG
GAAGGCCCGCCCTGGATTACGATTATAAAAAGAAACGAGTAGGTAAGATACCAGACGAAGAAGTCAGA
CAAGCGGTAGAAAAATTTGAAGAGTCAAAGGAGTTGGCTGAAAGAAGCATGTTAACTTTTAGAAAAAT
GATGTAGAACAAGTCAGCCAGTTGGCTGTGTTTCATAGAGGCAGCATTAGACTATCACAGACAGTCCACA
GAGATTCTGCAGGAGCTGCAGAGCAAGCTACAGATGCGAATATCAGCTGCATCCAGTGTCCCCAGACGA
GAATACAAGCCAAGGCCTGTGAAAAGGAGTTCTAGTGAGCTCAATGGAGTTTCCACCACCTCTGTAGTG
AAGACGACAGGTTCTAACATTCATGGACCAGCCCTGCTGTCGTGGTCTCTATGACTTTGAGCCAGAA
AACCAAGGAGAATTAGGATTTAAAGAAGGGGACATCATTACATTAACCAATCAAATAGATGAAAACCTGG
TATGAAGGAATGATACACGGAGAATCGGGATTCTCCCATTAATTACGTGGAAGTGATCGTGCCTTTA
CCTCAG
ACGCGTACGCGGCCGCTCGAG - GFP Tag - GTTAAAC
```



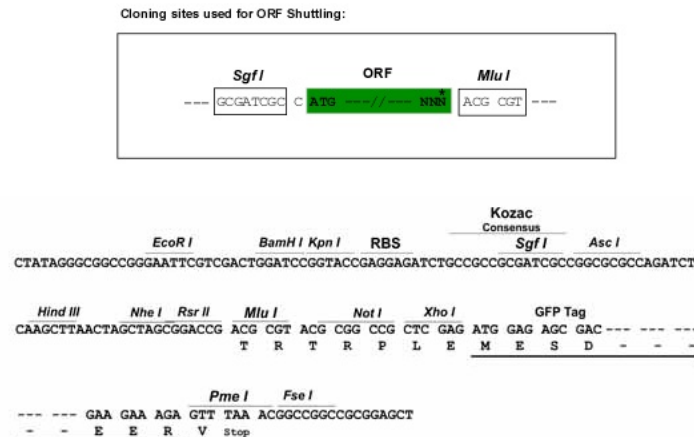
[View online »](#)

Protein Sequence: >Peptide sequence encoded by RG237118
 Blue=ORF Red=Cloning site Green=Tag(s)

MLNTVSKIRGQVKTTGYPQTEGLLGDCMLKYGKELGEDSTFGNALIEVGESMKLMAEVKDSL DINVKQT
 FIDPLQLLQDKDLKEIGHHLKKLEGRRLDYDKKKRVGKIPDEEVRQAVEKFEESKELAERSMFNLEN
 DVEQVSQLAVFIEAALDYHRQSTEILQELQSKLQMRISAASSVPRREYKPRPVKRSSSELNGVSTTSVV
 KTTGSNIPMDQPCCRGLYDFEPENQGELGFKEGDIITLTNQIDENWYEGMIHGESGFFPINYVEVIVPL
 PQ
 TRTRPLEMESDESGLPAMEIECRITGTLNGVEFELVGGEGTPEQGRMTNKMKSTKGALTFSPYLLSHV
 MGYGFYHFGTYPSTYENPFLHAINNGGYNTRIEKYEDGGVLHVSFSYRYEAGRVIGDFKVMGTGFPED
 SVIFTDKIIRS NATVEHLHPMGDNDLDGSFTRTFSLRDGGYSSVVD SHMHFKSAIHPSILQNGGPMFA
 FRRVEEDHSNTELGIVEYQHAFKTPDADAGEERV

Restriction Sites: SgfI-MluI

Cloning Scheme:



ACCN: NM_001301108

ORF Size: 834 bp

OTI Disclaimer: The molecular sequence of this clone aligns with the gene accession number as a point of reference only. However, individual transcript sequences of the same gene can differ through naturally occurring variations (e.g. polymorphisms), each with its own valid existence. This clone is substantially in agreement with the reference, but a complete review of all prevailing variants is recommended prior to use. [More info](#)

OTI Annotation: This clone was engineered to express the complete ORF with an expression tag. Expression varies depending on the nature of the gene.

Components: The ORF clone is ion-exchange column purified and shipped in a 2D barcoded Matrix tube containing 10ug of transfection-ready, dried plasmid DNA (reconstitute with 100 ul of water).

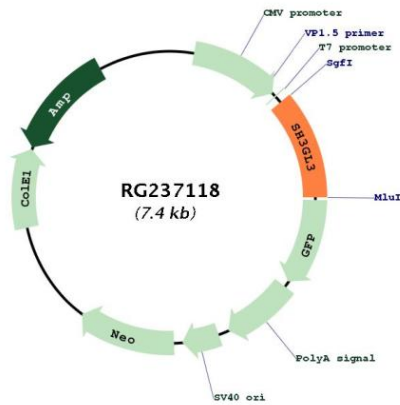
RefSeq: [NM_001301108.1](#), [NP_001288037.1](#)

RefSeq Size: 1836 bp

RefSeq ORF: 837 bp

Locus ID: 6457
UniProt ID: [Q99963](#)
Cytogenetics: 15q25.2
Protein Pathways: Endocytosis
MW: 32 kDa
Gene Summary: Implicated in endocytosis. May recruit other proteins to membranes with high curvature (By similarity).[UniProtKB/Swiss-Prot Function]

Product images:



Circular map for RG237118