

Product datasheet for **RG237116**

TSNARE1 (NM_001291931) Human Tagged ORF Clone

Product data:

Product Type:	Expression Plasmids
Product Name:	TSNARE1 (NM_001291931) Human Tagged ORF Clone
Tag:	TurboGFP
Symbol:	TSNARE1
Mammalian Cell Selection:	Neomycin
Vector:	pCMV6-AC-GFP (PS100010)
E. coli Selection:	Ampicillin (100 ug/mL)
ORF Nucleotide Sequence:	>RG237116 representing NM_001291931. Blue=ORF Red=Cloning site Green=Tag(s)

```
GCTCGTTTAGTGAACCGTCAGAATTTTGTAAACGACTCACTATAGGGCGCCGGGAATTCGTCGACTG
GATCCGGTACCGAGGAGATCTGCCGCCGCGATCGCC
ATGTCATACGGATCCATCGCCCGTGGAGGTGGCCCTGGGGAGCCGTGGCCCTTTCGGGGACCTTCGAGA
CAAGGCTGTCAGCCCCTAGCCACCCAGGTGCATCCGTGCAACCTCCAGGAGCTGTTCCAGGAGATGTCG
GCCAACGTCTTCCGAATCAACTCCAGTGTGACCTCCTGGAGCGGAGCCTTCAGTCCTTAGGGACACCG
AGTGACACGCAGGAGCTTCGGGACAGCCTGCACACGGCACAGCAGGAGACCAACAAGACCATTGCAGCC
AGCGCCAGCTCCGTGAAGCAGATGGCCGAGCTGCTGCGCAGCTCCTGCCGGAGCGTCTGCAGCAGGAG
CGTCCTCAGCTGGACCGGCTGAAAACCCAGCTCTCAGATGCCATTTCAGTGCATATGGAGTGGTGCAGAAG
AAAATTGCAGAAAAGTCCAGAGCGTCTCCCATGGCGCAGAGGGGCAGTAAACAGCAGAGTCCCCAG
GCCCGTTTGGCCGAGCTGGCTGATGATGAGAAGGTCTTTAACGGGAGTGACAACATGTGGCAGGGCCAG
GAGCAGGCGCTGCTCCCGGACATCACTGAAGAGGACCTGGAGGCCATCCGGCTGCGGGAGGAGGCCATC
CTGCAGATGGAGAGCAACTTGCTGGATGTGAATCAGATCATCAAGGACTTGGCCTCCATGGTGTGCAGAG
CAAGGAGAAGCTGTTGATAGTATTGAAGCCAGCCTTGAGGCTGCGTCTCGCATGCGGAGGCAGCCCGC
CAGCTCCTGGCTGGAGCCAGCCGCCACCAACTGATGAGGAGGACGAGACCCCGCTGCTTGTGGCTGC
CCC
ACGCGTACGCGGCCGCTCGAG - GFP Tag - GTTTAAAC
```



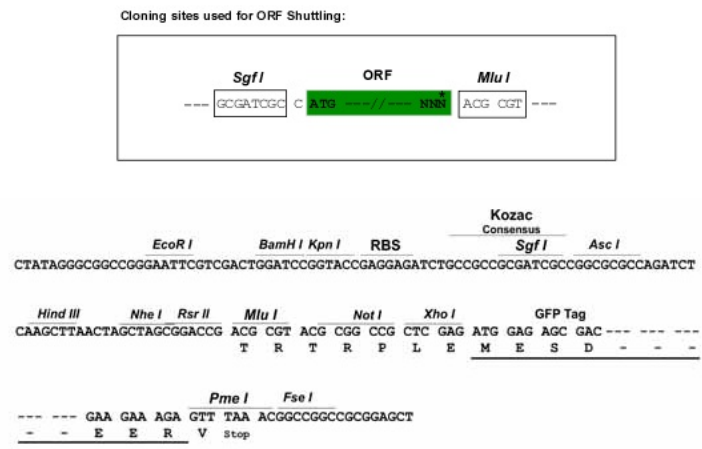
[View online »](#)

Protein Sequence: >Peptide sequence encoded by RG237116
 Blue=ORF Red=Cloning site Green=Tag(s)

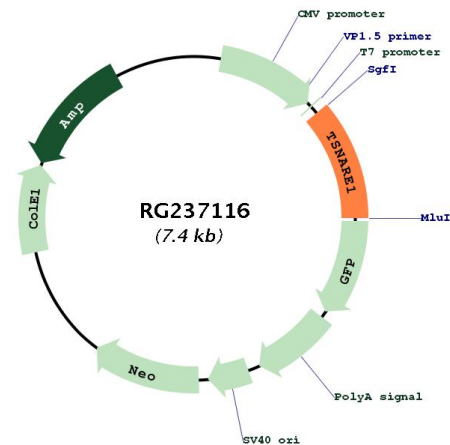
MSYGSIARGGGLGSRGPFGGPSRQGCQPLATQVDPCNLQELFQEMSANVFRINSSVTSLERSLQSLGTP
 SDTQELRDSLHTAQQETNKTI AASASSVKQMAELLRSSCPERLQQERPQLDRLKTQLSDAIQCYGVVQK
 KIAEKSRALLPMAQRGSKQQSPQAPFAELADDEKVFNGSDNMWQGEQALLPDI TEEDLEAIRLREEAI
 LQMESNLLDVNQIIKDLASMVSEQGEAVDSIEASLEAASSHAEARQLLAGASRHQLMRTRPPAACGC
 P
 TRTRPLEMESDESGLPAMEIECRITGTLNGVEFELVGGGEGTPEQGRMTNKMKSTKGALTFSPYLLSHV
 MGYGFYHFGTYPSTYENPFLHAINNGGYNTRIEKYEDGGVLHVSFSYRYEAGRVIGDFKVMGTGFPEP
 SVIFTDKIIRS NATVEHLHPMGDNDLDGSFTRTFSLRDGGYSSVVD SHMHFKSAIHPSILQNGGPMFA
 FRRVEEDHSNTELGIVEYQHAFKTPDADAGEERV

Restriction Sites: SgfI-MluI

Cloning Scheme:



Plasmid Map:



ACCN:	NM_001291931
ORF Size:	831 bp
OTI Disclaimer:	The molecular sequence of this clone aligns with the gene accession number as a point of reference only. However, individual transcript sequences of the same gene can differ through naturally occurring variations (e.g. polymorphisms), each with its own valid existence. This clone is substantially in agreement with the reference, but a complete review of all prevailing variants is recommended prior to use. More info
OTI Annotation:	This clone was engineered to express the complete ORF with an expression tag. Expression varies depending on the nature of the gene.
Components:	The ORF clone is ion-exchange column purified and shipped in a 2D barcoded Matrix tube containing 10ug of transfection-ready, dried plasmid DNA (reconstitute with 100 ul of water).
RefSeq:	NM_001291931.2
RefSeq Size:	3209 bp
RefSeq ORF:	834 bp
Locus ID:	203062
Cytogenetics:	8q24.3
Protein Families:	Druggable Genome, Transmembrane
Protein Pathways:	SNARE interactions in vesicular transport
MW:	30.6 kDa