

Product datasheet for **RG237114**

NRBF2 (NM_001282405) Human Tagged ORF Clone

Product data:

Product Type:	Expression Plasmids
Product Name:	NRBF2 (NM_001282405) Human Tagged ORF Clone
Tag:	TurboGFP
Symbol:	NRBF2
Synonyms:	COPR; COPR1; COPR2; NRBF-2
Mammalian Cell Selection:	Neomycin
Vector:	pCMV6-AC-GFP (PS100010)
E. coli Selection:	Ampicillin (100 ug/mL)
ORF Nucleotide Sequence:	>RG237114 representing NM_001282405. Blue=ORF Red=Cloning site Green=Tag(s)

```
GCTCGTTTAGTGAACCGTCAGAATTTTGTAAACGACTCACTATAGGGCGCCGGGAATTCGTCGACTG
GATCCGGTACCGAGGAGATCTGCCGCCGCGATCGCC
ATGTTCCCGGCCACTACTCCCTTCTAAGGCCCGCGCTTACCCGGGGTCTATGGAAGTAATGGA
AGGACCCCTCAACCTGCATATCTTTCTGAAGCCATGAAGCTGACACAGTCAGAGCAGGCTCATCTTCA
CTGGAATTGCAAAGGGATAGCCATATGAAACAGCTCCTCCTCATCAAGAGAGATGGAAAAGGGCCAG
CGTGAAGAAAGATTGAAAGCCCAGCAGAACACAGACAAGGATGCAGCTGCCATCTTCAGACATCTCAC
AAACCCTCTGCAGAGGATGCAGAGGGCCAGAGTCCCCTTCTCAGAAGTACAGCCCTCCACAGAGAAA
TGCCTGCCTGAGATTCAGGGGATCTTTGACAGGGATCCAGACACACTACTTTATTTACTTCAGAAAAG
AGTGAGCCAGCAGAGCCATGTATTGGAAGCAAAGCCCCAAAAGATGATAAAACAATTATAGAGGAGCAG
GCAACCAAAATTGCAGATTTGAAGAGGCATGTGGAATTCCTTGTGGCTGAGAATGAAAGATTAAGGAAA
GAAAATAAAACAATAAAGGCTGAAAAGGCCAGACTTCTAAAAGGTCCAATAGAAAAGGAGCTGGATGTA
GATGCTGATTTGTAGAAACGTCAGAGTTATGGAGCTTGCCACCACATGCAGAACTGCTACAGCCTCC
TCAACCTGGCAGAAGTTCGCAGCAAATACTGGGAAAGCCAAGGACATTCCAATCCCCAATCTTCTCCC
TTGGATTTCCATCTCCAGAACTTCTCTTATGGAGCTCTCTGAGGATATTCTGAAAGGATTTATGAAT
AAT
ACGCGTACGCGGCCGCTCGAG - GFP Tag - GTTTAAAC
```



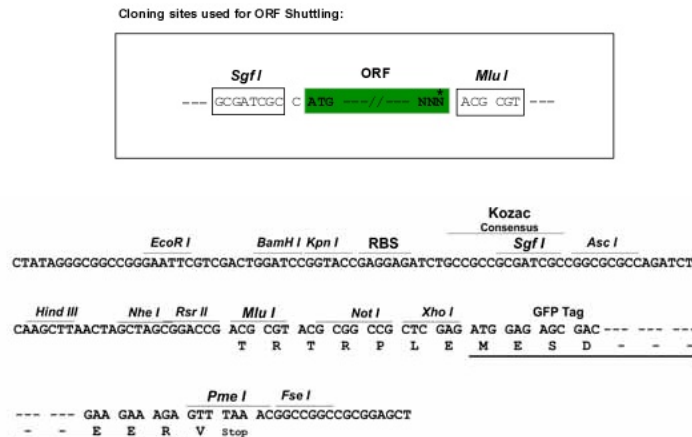
[View online »](#)

Protein Sequence: >Peptide sequence encoded by RG237114
 Blue=ORF Red=Cloning site Green=Tag(s)

MFPGATTPLPKAAAYPGVYVYSGNGRTPQPAYLSEAMKLTQSEQAHLSELELRDQSHMKQLLLIQRWKRAQ
 REERLKAQNTDKDAAAHLQTSKHPAEDAEGQSPLSQKYSPEKCLPEIQGIFDRDPDPTLLYLLQOK
 SEPAEPCIGSKAPKDDKTIIEEQATKIADLKRHVEFLVAENERLRKENKQLKAEKARLLKGPiEKELDV
 DADFVETSELWSPPHAETATASSTWQKFAANTGKAKDIPINLPPLDFPSPPELPLMELSEDILKGFMN
 N
 TRTRPLEMESDESGLPAMEIECRITGTLNGVEFELVGGGEGTPEQGRMTNKMKSTKGALTFSPYLLSHV
 MGYGFYHFGTYPYSGYENPFLHAINNGGYNTRIEKYEDGGVLHVSFSYRYEAGRVIGDFKVMGTGFPED
 SVIFTDKIIRSNATVEHLHPMGDNDLDGSFTRTFSLRDGGYSSVVDSHMHFKSAIHPSILQNGGPMFA
 FRRVEEDHSNTELGIVEYQHAFKTPDADAGEERV

Restriction Sites: SgfI-MluI

Cloning Scheme:



ACCN: NM_001282405

ORF Size: 831 bp

OTI Disclaimer: The molecular sequence of this clone aligns with the gene accession number as a point of reference only. However, individual transcript sequences of the same gene can differ through naturally occurring variations (e.g. polymorphisms), each with its own valid existence. This clone is substantially in agreement with the reference, but a complete review of all prevailing variants is recommended prior to use. [More info](#)

OTI Annotation: This clone was engineered to express the complete ORF with an expression tag. Expression varies depending on the nature of the gene.

Components: The ORF clone is ion-exchange column purified and shipped in a 2D barcoded Matrix tube containing 10ug of transfection-ready, dried plasmid DNA (reconstitute with 100 ul of water).

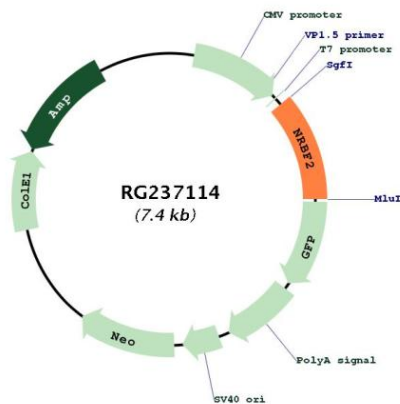
RefSeq: [NM_001282405.1](#), [NP_001269334.1](#)

RefSeq Size: 1830 bp

RefSeq ORF: 834 bp

Locus ID: 29982
UniProt ID: [Q96F24](#)
Cytogenetics: 10q21.3
Protein Families: Druggable Genome
MW: 31.5 kDa
Gene Summary: May modulate transcriptional activation by target nuclear receptors. Can act as transcriptional activator (in vitro).[UniProtKB/Swiss-Prot Function]

Product images:



Circular map for RG237114