

Product datasheet for **RG237097**

C22orf25 (TANGO2) (NM_001283106) Human Tagged ORF Clone

Product data:

Product Type:	Expression Plasmids
Product Name:	C22orf25 (TANGO2) (NM_001283106) Human Tagged ORF Clone
Tag:	TurboGFP
Symbol:	TANGO2
Synonyms:	C22orf25; MECRCN
Mammalian Cell Selection:	Neomycin
Vector:	pCMV6-AC-GFP (PS100010)
E. coli Selection:	Ampicillin (100 ug/mL)
ORF Nucleotide Sequence:	>RG237097 representing NM_001283106. Blue=ORF Red=Cloning site Green=Tag(s)

```
GCTCGTTTAGTGAACCGTCAGAATTTGTAAACGACTCACTATAGGGCGCCGGGAATTCGTCGACTG
GATCCGGTACCGAGGAGATCTGCCGCCGCGATCGCC
ATGTGCATCATCTTCTTTAAGTTTGATCCTCGCCCTGTTTCCAAAAACGCGTACAGGCTCATCTTGGCA
GCCAACAGGGATGAATTCTACAGCCGACCCTCCAAGTTAGCTGACTTCTGGGGAAACAACAACGAGATC
CTCAGTGGGCTGGACATGGAGGAAGGCAAGGAAGGAGGCACATGGCTGGGCATCAGCACACGTGGCAAG
CTGGCAGCACTCACCAACTACCTGCAGCCGAGCTGGACTGGCAGGCCCGAGGGCGAGGTGAACCTTGTG
ACCCACTTCTGACCACTGACGTGGACAGCTTGTCTACCTGAAGAAGGTCTCTATGGAGGGCCATCTG
TACAATGGCTTCAACCTCATAGCAGCCGACCTGAGCACAGCAAAGGGAGACGTCATTTGCTACTATGGG
AACCGAGGGGAGCCTGATCCTATCGTTTTGACGCCAGGCACCTACGGGCTGAGCAACGCGCTGCTGGAG
ACTCCCTGGAGGAAGCTGTGCTTTGGGAAGCAGCTCTTCCCTGGAGGCTGTGGAACGGAGCCAGGCGCTG
CCCAAGGATGTGCTCATCGCCAGCCTCCTGGATGTGCTCAACAATGAAGAGGCGCAGCTGCCAGACCCG
GCCATCGAGGACCAGGGTGGGGAGTACGTGCAGCCATGCTGAGCAAGTACGCGGCTGTGTGCGTGCCG
TGCCCTGGCTACGGCACCAGAACCAACTATCATCTGGTAGATGCGGACGGCCACGTGACCTTCACT
GAGCGTAGCATGATGGACAAGGACCTCTCCACTGGGAGACCAGAACCTATGAGTTCACACTGCAGAGC
AGCGGACCGACGCGTACGCGGCCGCTCGAG - GFP Tag - GTTTAAAC
```



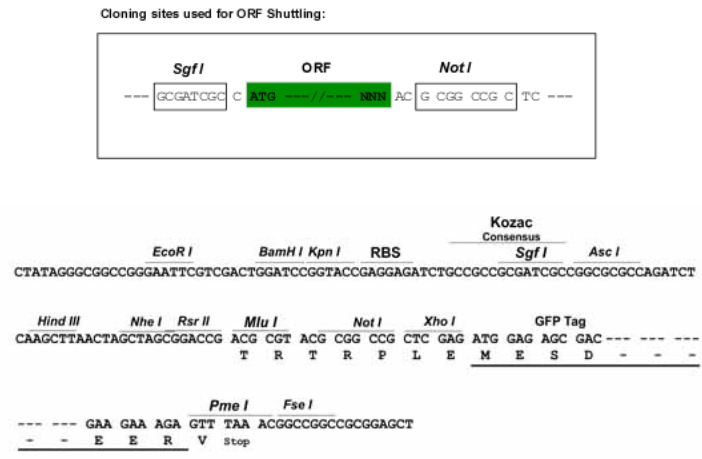
[View online »](#)

Protein Sequence: >Peptide sequence encoded by RG237097
 Blue=ORF Red=Cloning site Green=Tag(s)

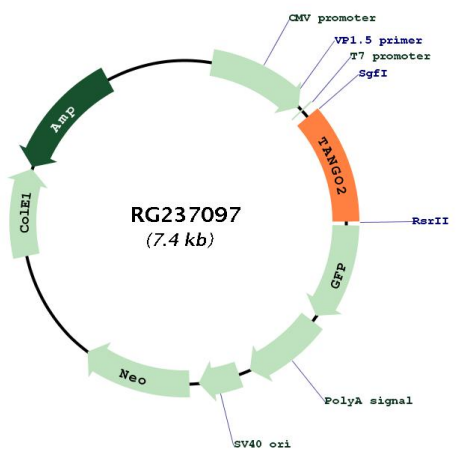
MCIIFKFDPRPVSKNAYRLILAA NRDEFYSRPSKLADFWGNNEILSGLDMEEGKEGGTWLGISTRGK
 LAAL TNYLQPQLDWQARGRGELVTHFL TTDVDSL SYLKKVSMEGHLYNGFNLIAADLSTAKGDVICYYG
 NRGEPDPIVLTPGTYGLSNALLETPWRKLCFGKQLFLEAVERSQUALPKDVLIASLLDVLNNEEAQLPDP
 AIEDQGGEEYVQPMLSKYAAVCVRCPGYGTRTNTIILVDADGHVTFTERSMDKDL SHWETRITYEFTLQS
 SGPTRTRPLEMESDESGLPAMEIECRITGTLNGVEFELVGGEGTPEQGRMTNKMKSTKGALTFSPYLL
 SHVMGYGFYHFGTYP SGYENPFLHAINNGGYTNTRIEKYEDGGVLHVSFSYRYEAGRVI GDFKVMGTGF
 PEDSVIFTDKIIRSNATVEHLHPMGDNDLDGSFTRTFLRDGGYSSVVD SHMHFKSAIHPSILQNGGP
 MFAFRRVEEDHSNTELGIVEYQHAFKTPDADAGEERV

Restriction Sites: SgfI-NotI

Cloning Scheme:



Plasmid Map:



ACCN: NM_001283106

ORF Size:	828 bp
OTI Disclaimer:	The molecular sequence of this clone aligns with the gene accession number as a point of reference only. However, individual transcript sequences of the same gene can differ through naturally occurring variations (e.g. polymorphisms), each with its own valid existence. This clone is substantially in agreement with the reference, but a complete review of all prevailing variants is recommended prior to use. More info
OTI Annotation:	This clone was engineered to express the complete ORF with an expression tag. Expression varies depending on the nature of the gene.
Components:	The ORF clone is ion-exchange column purified and shipped in a 2D barcoded Matrix tube containing 10ug of transfection-ready, dried plasmid DNA (reconstitute with 100 ul of water).
RefSeq:	NM_001283106.2
RefSeq Size:	2463 bp
RefSeq ORF:	831 bp
Locus ID:	128989
UniProt ID:	Q6ICL3
Cytogenetics:	22q11.21
MW:	31.4 kDa
Gene Summary:	This gene belongs to the transport and Golgi organization family, whose members are predicted to play roles in secretory protein loading in the endoplasmic reticulum. Depletion of this gene in Drosophila S2 cells causes fusion of the Golgi with the ER. In mouse tissue culture cells, this protein co-localizes with a mitochondrially targeted mCherry protein and displays very low levels of co-localization with Golgi and peroxisomes. Allelic variants of this gene are associated with rhabdomyolysis, metabolic crises with encephalopathy, and cardiac arrhythmia. [provided by RefSeq, Apr 2016]