

Product datasheet for **RG237067**

CLK2 (NM_001294339) Human Tagged ORF Clone

Product data:

Product Type:	Expression Plasmids
Product Name:	CLK2 (NM_001294339) Human Tagged ORF Clone
Tag:	TurboGFP
Symbol:	CLK2
Mammalian Cell Selection:	Neomycin
Vector:	pCMV6-AC-GFP (PS100010)
E. coli Selection:	Ampicillin (100 ug/mL)
ORF Nucleotide Sequence:	>RG237067 representing NM_001294339. Blue=ORF Red=Cloning site Green=Tag(s)

```
GCTCGTTTAGTGAACCGTCAGAATTTTGTAAACGACTCACTATAGGGCGCCGGGAATTCGTCGACTG
GATCCGGTACCGAGGAGATCTGCCGCCGCGATCGCC
ATGTTTGACTGGTTTGACTACCATGGCCACATGTGTATCTCCTTTGAGCTTCTGGGCCTTAGCACCTTC
GATTTCTCAAAGACAACAACACTACCTGCCCTACCCCATCCACCAAGTGCGCCACATGGCCTTCCAGCTG
TGCCAGGCTGTCAAGTTCCTCCATGATAACAAGCTGACACATACAGACCTCAAGCCTGAAAATATTCTG
TTTGTGAATTCAGACTATGAGCTCACCTACAACCTAGAGAAGAAGCGAGATGAGCGCAGTGTGAAGAGC
ACAGCTGTGCGGGTGGTAGACTTTGGCAGTGCCACCTTTGACCATGAGCACCATAGCACCATTGTCTCC
ACTCGCCATTACCGAGCACCAGAAGTCATCCTTGAGTTGGCTGGTCACAGCCTTGTGATGTGGAGT
ATAGGCTGCATCATCTTTGAATACTATGTGGGATTCACCCTCTTCCAGACCCATGACAACAGAGAGCAT
CTAGCCATGATGAAAAGGATCTTGGTCTATCCCTTCCCGATGATCCGAAAAGACAAGAAAGCAGAAA
TATTTTTACCGGGTGCCTGGATTGGGATGAGAACACATCAGCTGGGCGCTATGTTTCGTGAGAACTGC
AAACCGCTGCGCGGTATCTGACCTCAGAGGCAGAGGAACACCACCAGCTCTTCGATCTGATTGAAAGC
ATGCTAGAGTATGAACCAGCTAAGCGGCTGACCTTGGGTGAAGCCCTTCAGCATCCTTTCTCGCCCGC
CTTCGGGCTGAGCCGCCAACAAGTTGTGGGACTCCAGTCGGGATATCAGTCGG
ACGCGTACGCGGCCGCTCGAG - GFP Tag - GTTTAAAC
```



[View online »](#)

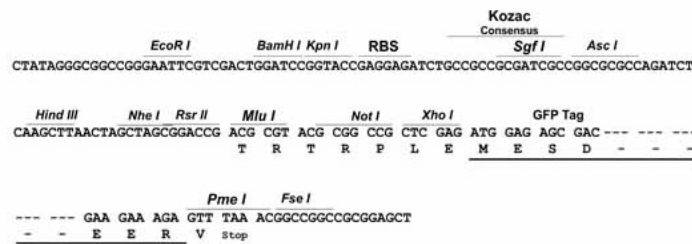
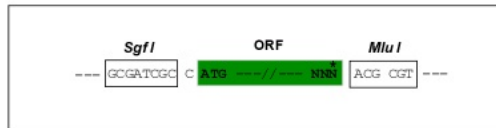
Protein Sequence: >Peptide sequence encoded by RG237067
 Blue=ORF Red=Cloning site Green=Tag(s)

MFDWFDYHGHMCISFELLGLSTFDLKDNNYPYPIHQVRHMAFQLCQAVKFLHDNKLTHDLKPENIL
 FVNSDYELTYNLEKKRDRERSVKSTAVRVVDFGSATFDHEHHSTIVSTRHYRAPEVILELGSQPCDVWS
 IGCIIFEYVGF TLFQTHDNREHLAMMERILGPISRMIRKTRKQKYFYRGRLDWIDENTSAGRYVRENC
 KPLRRYL TSEAEHHQLFDLIESMLEYEPKRLTLGEALQHPFFARLRAEPPNKLWDSSRDISR
 TRTRPLEMESDESGLPAMEIECRITGTLNGVEFELVGGGEGTPEQGRMTNKMKSTKGALTFSPYLLSHV
 MGYGFYHFGTYPSTYENPFLHAINNGGYTNTRIEKYEDGGVLHVSFSYRYEAGRVIGDFKVMGTGFPED
 SVIFTDKIIRS NATVEHLHPMGDNDLDGSFTRTFSLRDGGYSSVVD SHMHFKSAIHPSILQNGGPMFA
 FRRVEEDHSNTELGIVEYQHAFKTPDADAGEERV

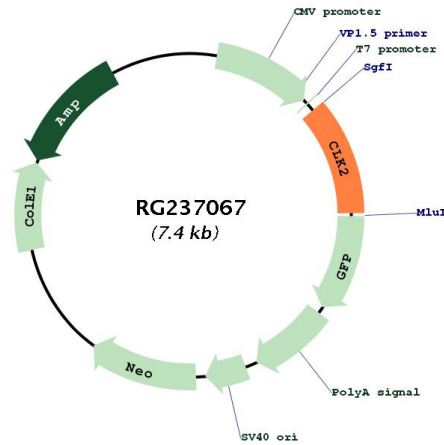
Restriction Sites: SgfI-MluI

Cloning Scheme:

Cloning sites used for ORF Shuttling:



Plasmid Map:



ACCN: NM_001294339

ORF Size:	813 bp
OTI Disclaimer:	The molecular sequence of this clone aligns with the gene accession number as a point of reference only. However, individual transcript sequences of the same gene can differ through naturally occurring variations (e.g. polymorphisms), each with its own valid existence. This clone is substantially in agreement with the reference, but a complete review of all prevailing variants is recommended prior to use. More info
OTI Annotation:	This clone was engineered to express the complete ORF with an expression tag. Expression varies depending on the nature of the gene.
Components:	The ORF clone is ion-exchange column purified and shipped in a 2D barcoded Matrix tube containing 10ug of transfection-ready, dried plasmid DNA (reconstitute with 100 ul of water).
RefSeq:	NM_001294339.2
RefSeq Size:	2115 bp
RefSeq ORF:	816 bp
Locus ID:	1196
UniProt ID:	P49760
Cytogenetics:	1q22
Protein Families:	Druggable Genome, Protein Kinase
MW:	32.8 kDa
Gene Summary:	This gene encodes a dual specificity protein kinase that phosphorylates serine/threonine and tyrosine-containing substrates. Activity of this protein regulates serine- and arginine-rich (SR) proteins of the spliceosomal complex, thereby influencing alternative transcript splicing. Chromosomal translocations have been characterized between this locus and the PAFAH1B3 (platelet-activating factor acetylhydrolase 1b, catalytic subunit 3 (29kDa)) gene on chromosome 19, resulting in the production of a fusion protein. Note that this gene is distinct from the TELO2 gene (GeneID:9894), which shares the CLK2 alias, but encodes a protein that is involved in telomere length regulation. There is a pseudogene for this gene on chromosome 7. Alternative splicing results in multiple transcript variants. [provided by RefSeq, Jun 2014]