

Product datasheet for **RG237040**

TCP11L2 (NM_001286262) Human Tagged ORF Clone

Product data:

Product Type:	Expression Plasmids
Product Name:	TCP11L2 (NM_001286262) Human Tagged ORF Clone
Tag:	TurboGFP
Symbol:	TCP11L2
Mammalian Cell Selection:	Neomycin
Vector:	pCMV6-AC-GFP (PS100010)
E. coli Selection:	Ampicillin (100 ug/mL)
ORF Nucleotide Sequence:	>RG237040 representing NM_001286262. Blue=ORF Red=Cloning site Green=Tag(s)

```
GCTCGTTTAGTGAACCGTCAGAATTTTGTAAACGACTCACTATAGGGCGGCCGGGAATTCGTCGACTG
GATCCGGTACCGAGGAGATCTGCCGCCGCGATCGCC
ATGCCCTTCAATGGCGAGAAGCAGTGTGTGGGAGAGGACCAGCCAAGCGATTCTGATTCTTCCCGGTTT
TCCGAAAGCATGGCTTCGCTCAGTGACTATGAATGCTCCAGGCAGAGCTTTGCAAGTGACTCCTCCAGC
AAATCCAGCTCTCCTGCTTCAACAAGCCCTCCAAGGTTGTAACATTTGATGAAGTGATGGCTACAGCA
AGGAACCTATCAAACCTTGACTCTTGCTCATGAGATTGCTGTAATGAGAACTTTCAATTGAAACAAGAG
GCTCTCCAGAAAAGAGTTTGGCTGGTCGAGTGAAGCACATTGTTACCAGGCCTTCTGGGACGTCTTG
GATTCAGAACTAAATGCTGACCCTCTGAGTTTGAACATGCCATCAAACCTTTTGAAGAAAATCAGAGAG
ATTCTTCTCTTTTTCTCACTCCCGGTGGCAACCGGCTTCGCAACCAAATCTGTGAAGTTTTGGACACA
GACCTCATTAGGCAGCAGGCTGAGCACAGTGTGTTGACATCCAAGGCCTGGCCAACTATGTCATCAGT
ACGATGGGAAAGCTGTGTGCTCCCGTGCAGATAATGATATCAGAGAGTTAAAGGCTACTGGCAACATC
GTGGAGGTGCTGAGACAAATATTCCATGCTCCTGGACCTCATGCAAATGGACATGGCCAATTTTACAATT
ATGAGTCTCAGACCGCACCTTCAACGCCAGTTGGTGAATATGAGAGAACCAAGTTCCAGGAAATTTTG
GAAGAACTCCAAGAAAAGCCGAGGTTGCAGGTGCCTCA
ACGCGTACGCGGCCGCTCGAG - GFP Tag - GTTTAAAC
```



[View online »](#)

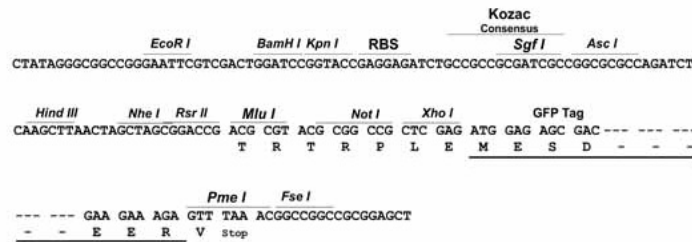
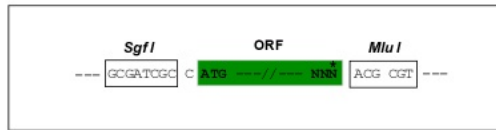
Protein Sequence: >Peptide sequence encoded by RG237040
 Blue=ORF Red=Cloning site Green=Tag(s)

MPFNGEKQCVGEDQPSDSDSSRFSESMASLSDYECSRQSFASDSSSKSSSPASTSPPRVVFDEVMATA
 RNL SNL TLAHEIAVNENFQLKQEALPEKSLAGRVKHIVHQAFWDVLDSELNADPPEFEHAIKLFEEIRE
 ILLSFLTPGGNRLRNQICEVLDLDIRQQAHSVAVDIQGLANYVISTMGKLCAPVRDNDIRELKATGNI
 VEVLRQIFHVLDLMQMDMANFTIMSLRPHLQRQLVEYERTKFQEILEETPRKAEVAGAS
 TRTRPLEMESDESGLPAMEIECRITGTLNGVEFELVGGEGTPEQGRMTNKMSTKGALTFSPYLLSHV
 MGYGFYHFGTYPSGYENPFLHAINNGGYTNTRIEKYEDGGVLHVSFSYRYEAGRVIGDFKVMGTGFPEP
 SVIFTDKIIRSNAIVEHLHPMGDNDLDGSFTRTFSLRDGGYSSVVD SHMHFKSAIHPSILQNGGPMFA
 FRRVEEDHSNTELGIVEYQHAFKTPDADAGEERV

Restriction Sites: SgfI-MluI

Cloning Scheme:

Cloning sites used for ORF Shuttling:



ACCN: NM_001286262

ORF Size: 798 bp

OTI Disclaimer: The molecular sequence of this clone aligns with the gene accession number as a point of reference only. However, individual transcript sequences of the same gene can differ through naturally occurring variations (e.g. polymorphisms), each with its own valid existence. This clone is substantially in agreement with the reference, but a complete review of all prevailing variants is recommended prior to use. [More info](#)

OTI Annotation: This clone was engineered to express the complete ORF with an expression tag. Expression varies depending on the nature of the gene.

Components: The ORF clone is ion-exchange column purified and shipped in a 2D barcoded Matrix tube containing 10ug of transfection-ready, dried plasmid DNA (reconstitute with 100 ul of water).

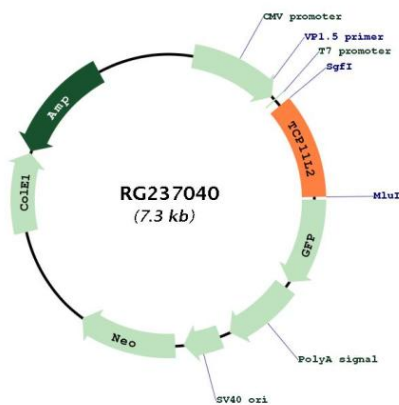
RefSeq: [NM_001286262.2](#)

RefSeq Size: 1525 bp

RefSeq ORF: 801 bp

Locus ID: 255394
 UniProt ID: [Q8N4U5](#)
 Cytogenetics: 12q23.3
 Protein Families: Druggable Genome
 MW: 30.3 kDa

Product images:



Circular map for RG237040