

Product datasheet for **RG237033**

TSSC4 (NM_001297661) Human Tagged ORF Clone

Product data:

Product Type:	Expression Plasmids
Product Name:	TSSC4 (NM_001297661) Human Tagged ORF Clone
Tag:	TurboGFP
Symbol:	TSSC4
Mammalian Cell Selection:	Neomycin
Vector:	pCMV6-AC-GFP (PS100010)
E. coli Selection:	Ampicillin (100 ug/mL)
ORF Nucleotide Sequence:	>RG237033 representing NM_001297661. Blue=ORF Red=Cloning site Green=Tag(s)

```
GCTCGTTTAGTGAACCGTCAGAATTTTGTAAACGACTCACTATAGGGCGGCCGGGAATTCGTCGACTG
GATCCGGTACCGAGGAGATCTGCCGCCGCGATCGCC
ATGGCTGAGGCAGGAACAGGCCTCCTCCAGCCACGGTGCAGCCATTCCATCTGAGAGGCATGAGCTCC
ACCTTCTCCCAGCGCAGCCGTGACATCTTTGACTGCCTGGAGGGGGCGCCAGACGGGCTCCATCCTCT
GTGGCCACACCAGCATGAGTGACAACGGAGGCTTCAAGCGGCCCTAGCGCCCTCAGGCCGGTCTCCA
GTGGAAGGCTGGGCAGGGCCATCGGAGCCCTGCCTACCAAGGGTGCCTCCGGTCCCCGACTACGTG
GCACACCCCGAGCGCTGGACCAAGTACAGCCTGGAAGATGTGACCGAGGTCAGCGAGCAGAGCAATCAG
GCCACCGCCCTGGCCTTCTGGGCTCCCAGAGCCTGGCTGCCCCACTGACTGCGTGTCTCCTTCAAC
CAGGATCCCTCCAGCTGTGGGGAGGGGAGGGTCACTTTCACCAAACAGTCCGAGGGTGAAGCCAGA
CACGAGAGGAAGAGGGTCTGGGAAGGTGGGAGAGCCAGGCAGGGCGGCCCTTGGGAATCCTGCCACA
GACAGGGGCGAGGGCCCTGTGGAGCTGGCCATCTGGCCGGGCCGGGAGCCAGAGGCTGAGGAGTGG
GGCAGCCACCATGGAGGCTGCAGGAGGTGGAGGCACTGTGAGGGTCTGTCCACAGTGGGTCTGTGCCA
GGTCTCCCGCGGTGAAACTGTTGGCTTCCATGGCAGCAGGAAGCGGAGTCGAGACCACTTCCGGAAC
AAGAGCAGCAGCCCCGAGGACCCAGGTGCTGAGGTC
ACGCGTACGCGGCCGCTCGAG - GFP Tag - GTTTAAAC
```



[View online »](#)

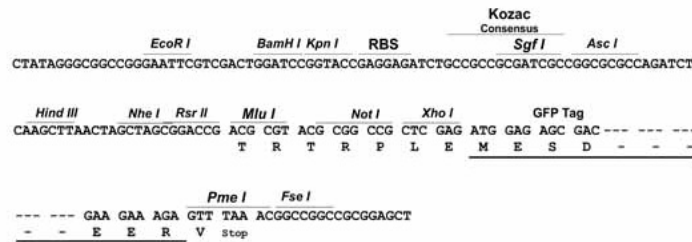
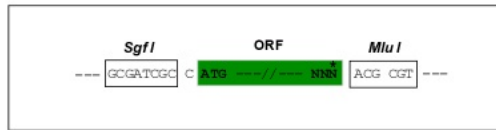
Protein Sequence: >Peptide sequence encoded by RG237033
 Blue=ORF Red=Cloning site Green=Tag(s)

MAEAGTGLLPATVQPFHLRGMSSSTFSQRSRDIFDCLEGAARRAPSSVAHTSMSDNGGFKRPLAPSGRSP
 VEGLGRAHRSPASPRVPPVDYVAHPERWTKYSLEDVTEVSEQSNQATALAFLGSQLAAPTDCVSSFN
 QDPSSCGEGRVIFTKPVRGVEARHERKRVLGVGEPGRGGLGNPATDRGEGPVELAHLAGPGSPEAEW
 GSHHGGLQEVEALSGSVHSGSVPLPPVETVGFHGSRKRSRDHFRNKSSSPEDPGAEV
 TRTRPLEMESDESGLPAMEIECRITGTLNGVEFELVGGGEGTPEQGRMTNKMSTKGALTFSPYLLSHV
 MGYGFYHFGTYPSGYENPFLHAINNGGYTNTRIEKYEDGGVLHVSFSYRYEAGRVIGDFKVMGTGFPE
 SVIFTDKIIRSNAIVEHLHPMGDNDLDGSFTRTFSLRDGGYSSVVDSHMHFKSAIHPSILQNGGPMFA
 FRRVEEDHSNTELGIVEYQHAFKTPDADAGEERV

Restriction Sites: SgfI-MluI

Cloning Scheme:

Cloning sites used for ORF Shuttling:



ACCN: NM_001297661

ORF Size: 795 bp

OTI Disclaimer: The molecular sequence of this clone aligns with the gene accession number as a point of reference only. However, individual transcript sequences of the same gene can differ through naturally occurring variations (e.g. polymorphisms), each with its own valid existence. This clone is substantially in agreement with the reference, but a complete review of all prevailing variants is recommended prior to use. [More info](#)

OTI Annotation: This clone was engineered to express the complete ORF with an expression tag. Expression varies depending on the nature of the gene.

Components: The ORF clone is ion-exchange column purified and shipped in a 2D barcoded Matrix tube containing 10ug of transfection-ready, dried plasmid DNA (reconstitute with 100 ul of water).

RefSeq: [NM_001297661.2](#)

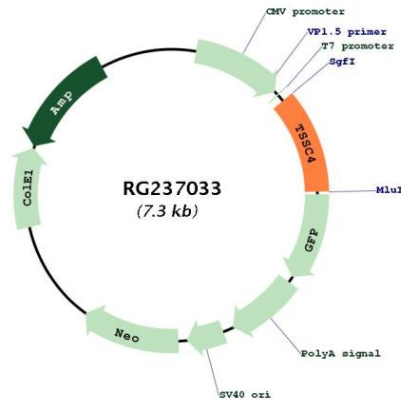
RefSeq Size: 1557 bp

RefSeq ORF: 798 bp

Locus ID: 10078
UniProt ID: [Q9Y5U2](#)
Cytogenetics: 11p15.5
Protein Families: Druggable Genome
MW: 28.4 kDa

Gene Summary: This gene is one of several tumor-suppressing subtransferable fragments located in the imprinted gene domain of 11p15.5, an important tumor-suppressor gene region. Alterations in this region have been associated with the Beckwith-Wiedemann syndrome, Wilms tumor, rhabdomyosarcoma, adrenocortical carcinoma, and lung, ovarian, and breast cancer. This gene is located among several imprinted genes; however, this gene, as well as the pan-hematopoietic expression gene (PHEMX), escapes imprinting. This gene may play a role in malignancies and disease that involve this region. Several transcript variants encoding two different isoforms have been found for this gene. [provided by RefSeq, Jul 2014]

Product images:



Circular map for RG237033