

## Product datasheet for **RG237031**

### **MKRN1 (NM\_001291663) Human Tagged ORF Clone**

#### Product data:

Product Type:	Expression Plasmids
Product Name:	MKRN1 (NM_001291663) Human Tagged ORF Clone
Tag:	TurboGFP
Symbol:	MKRN1
Synonyms:	RNF61
Mammalian Cell Selection:	Neomycin
Vector:	pCMV6-AC-GFP (PS100010)
E. coli Selection:	Ampicillin (100 ug/mL)
ORF Nucleotide Sequence:	>RG237031 representing NM_001291663. Blue=ORF Red=Cloning site Green=Tag(s)

```
GCTCGTTTAGTGAACCGTCAGAATTTTGTAAACGACTCACTATAGGGCGCCGGGAATTCGTCGACTG
GATCCGGTACCGAGGAGATCTGCCGCCGCGATCGCC
ATGCATGGGGTTTGAAGGAAGGAGACAAGTGTGCTACTCGCATGACCTCTCTGACAGTCCGTATAGT
GTAGTGTGCAAGTATTTTCAGCGAGGGTACTGTATTTATGGAGACCGCTGCAGATATGAACATAGCAAA
CCATTGAAACAGGAAGAAGCAACTGCTACAGAGCTAACTACAAAGTCATCCCTTGCTGCTCCTCAAGT
CTCTCATCGATAGTTGGACCACTTGTGAAATGAATACAGGCGAAGCTGAGTCAAGAAATCAAACCTT
GCAACTGTAGGAGCAGGTTGAGGACTGGGTGAATGCTATTGAGTTTGTCTGGGCAACCTACTGT
GGCCGACTGCGCCTTCTGCACTGAAGCACCCCTGCAGGGCTCAGTGACCAAGGAAGAATCAGAGAAA
GAGCAAACCGCCGTGGAGACAAAGAAGCAGCTGTGCCCTATGCTGCAGTGGGAGAGTGGCGATACGGG
GAGAACTGTGTATCTCCACGGAGATTCTGTGACATGTGTGGGCTGCAGGTCCTGCATCCAATGGAT
GCTGCCAGAGATCGCAGCATATCAAAATCGTGCATTGAGGCCATGAGAAGGACATGGAGCTCTCATTT
GCCGTGCAGCGCAGCAAGGACATGGTGTGTGGGATCTGCATGGAGGTGGTCTATGAGAAAGCCAACCCC
AGTGAGCGCCGCTTCGGGATCCTCTCAACTGCAACCACCTACTGTCTCAAGTGCATTCGCAAGTGG
AGGAGTGCTAAGCAATTTGAGAGCAAGATCATAAAG
ACGCGTACGCGGCCGCTCGAG - GFP Tag - GTTTAAAC
```



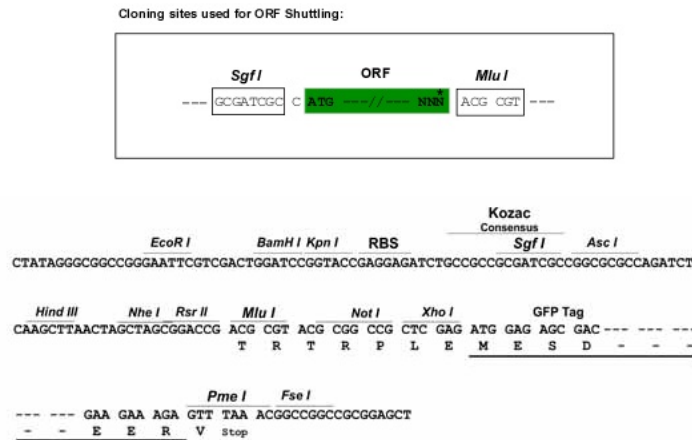
[View online »](#)

**Protein Sequence:** >Peptide sequence encoded by RG237031  
 Blue=ORF Red=Cloning site Green=Tag(s)

MHGVCKEGDNCRYSDDLSDSPYSVVCKYFQRGYCIYGDRCRYEHSKPLKQEEATATELTTKSSLAASS  
 LSSIVGPLVEMNTGEAESRNSNFATVAGSEWDVNAIEFVPGQPYCGRTAPSCTEAPLQGSVTKEESEK  
 EQTAVETKKQLCPYAAVGECRYGENCVYLHGDSCDMCGLQVLHPMDAAQRSQHIKSCIEAHEKDMELSF  
 AVQRKDMVCGICMEVVYEKANPSERRFGLSNCNHTYCLKCIKRWRSKQFESKIIK  
 TRTRPLEMESDESGLPAMEIECRITGTLNGVEFELVGGGEGTPEQGRMTNKMKSTKGALTFSPYLLSHV  
 MGYGFYHFGTYPSTYENPFLHAINNGGYTNTRIEKYEDGGVLHVSFSYRYEAGRVIGDFKVMGTGFPEP  
 SVIFTDKIIRSNAIVEHLHPMGDNDLDGSFTRTFSLRDGGYSSVVDSDMHFKSAIHPSILQNGGPMFA  
 FRRVEEDHSNTELGIVEYQHAFKTPDADAGEERV

**Restriction Sites:** SgfI-MluI

**Cloning Scheme:**



**ACCN:** NM\_001291663

**ORF Size:** 795 bp

**OTI Disclaimer:** The molecular sequence of this clone aligns with the gene accession number as a point of reference only. However, individual transcript sequences of the same gene can differ through naturally occurring variations (e.g. polymorphisms), each with its own valid existence. This clone is substantially in agreement with the reference, but a complete review of all prevailing variants is recommended prior to use. [More info](#)

**OTI Annotation:** This clone was engineered to express the complete ORF with an expression tag. Expression varies depending on the nature of the gene.

**Components:** The ORF clone is ion-exchange column purified and shipped in a 2D barcoded Matrix tube containing 10ug of transfection-ready, dried plasmid DNA (reconstitute with 100 ul of water).

**RefSeq:** [NM\\_001291663.1](#), [NP\\_001278592.1](#)

**RefSeq Size:** 1848 bp

**RefSeq ORF:** 798 bp

Locus ID: 23608

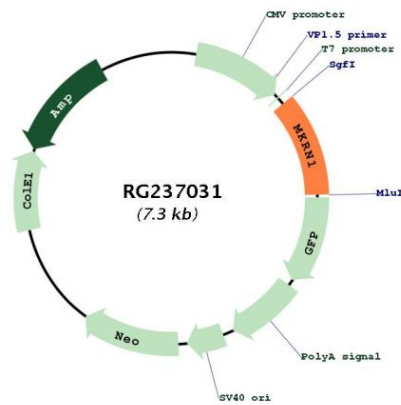
Cytogenetics: 7q34

Protein Families: Druggable Genome

MW: 30 kDa

**Gene Summary:** This gene encodes a protein that belongs to a novel class of zinc finger proteins. The encoded protein functions as a transcriptional co-regulator, and as an E3 ubiquitin ligase that promotes the ubiquitination and proteasomal degradation of target proteins. The protein encoded by this gene is thought to regulate RNA polymerase II-catalyzed transcription. Substrates for this protein's E3 ubiquitin ligase activity include the capsid protein of the West Nile virus and the catalytic subunit of the telomerase ribonucleoprotein. This protein controls cell cycle arrest and apoptosis by regulating p21, a cell cycle regulator, and the tumor suppressor protein p53. Pseudogenes of this gene are present on chromosomes 1, 3, 9, 12 and 20, and on the X chromosome. Alternative splicing results in multiple transcript variants encoding different isoforms. [provided by RefSeq, Apr 2014]

**Product images:**



Circular map for RG237031