

Product datasheet for **RG237019**

ZCCHC17 (NM_001282566) Human Tagged ORF Clone

Product data:

Product Type:	Expression Plasmids
Product Name:	ZCCHC17 (NM_001282566) Human Tagged ORF Clone
Tag:	TurboGFP
Symbol:	ZCCHC17
Synonyms:	HSPC251; pNO40; PS1D
Mammalian Cell Selection:	Neomycin
Vector:	pCMV6-AC-GFP (PS100010)
E. coli Selection:	Ampicillin (100 ug/mL)
ORF Nucleotide Sequence:	>RG237019 representing NM_001282566. Blue=ORF Red=Cloning site Green=Tag(s)

```
GCTCGTTTAGTGAACCGTCAGAATTTTGTAAACGACTCACTATAGGGCGCCGGGAATTCGTCGACTG
GATCCGGTACCGAGGAGATCTGCCGCCGCGATCGCC
ATGAGGAAGAACGGGTGGTGGCTGCCTGAGTCTGGAGGCGACGCCCTCGTTGTGCAGTCTGAACCTG
CCCTTCTCAGCTGAGGGTGTGACAGCAAGGGTGGGAGGCGGGCCCGAGTCCCAGCTGTGGTTGCT
ATGGTGACAGACTATGGGCCTTTATCAAAATCCAGGCTGTCGGAAGCAAGGTCTGGTCCATCGAACT
CATATGCATCCTGTCCGGTGGATAAGCCCTCTGAGATAGTAGATGTTGGAGATAAAGTGTGGGTGAAG
CTTATTGGCCGAGAGATAAAAATGATAGAATAAAAGTATCCCTCTCCATGAAGTTGTCAATCAAGGG
ACTGGAAAGACCTTGATCCCAACAATGTTATCATTGAGCAAGAAGAGAGGCGGAGCGCATCCTTCCAG
GATTACACTGGGCAAGATCACCTTGAGGCTGTCTTGAACACTACCTGCAAGAAGTGTGGCTGTAAA
GGCCACTTTGCAAAAGATTGTTTCATGCAACCAGGTGGGACTAAATACTCTCTGATACCTGATGAGGAA
GAGGAAAAGGAAGAGGCAAAAGTCAGCAGAGTTTGAGAAGCCTGACCTACAAGGAATCCTTCTAGAAAA
AGAAAGAAGGAGAAGAAGAAAAAGAAACATAGAGATAGGAAGTCATCTGACTCTGACAGCTCAGACTCT
GAGAGTGATACAGGCAAGAGGGCAAGGCACACATCAAAGACAGCAAGGCAGCAAAGAAGAAGAAAAAG
AAGAAGAAGCACAAAGAAGAAGCACAAAGGAG
ACGCGTACGCGGCCGCTCGAG - GFP Tag - GTTTAAAC
```



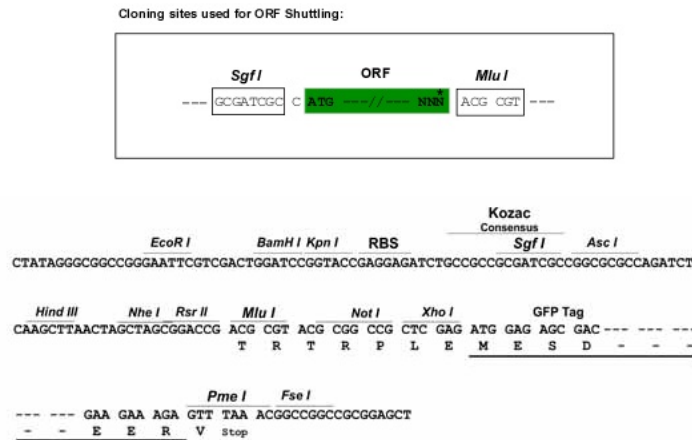
[View online »](#)

Protein Sequence: >Peptide sequence encoded by RG237019
 Blue=ORF Red=Cloning site Green=Tag(s)

MRKNGVGGCL SLEATPRLCSLNL PFS AEGADSKGWEAGPESPAVVAMVTDY GAFIKIPGCRKQGLVHRT
 HMSSCRVDKPSEIVDVGDKVWVKLIGREMKNDRIKVSLSMKVVNQTGKDLDPNNVIEQEERRRSFQ
 DYTQKITLEAVLNTTCKKCGCKGHFAKDCFMQPGGTYSLIPDEEEEEKAEKSAEFKPDPTRNPSRK
 RKKEKKKKKHRDRKSSDSDSSESDTGKRARHTSKDSKAAKKKKKKKKKKHKKHKE
 TRTRPLEMESDESGLPAMEIECRITGTLNGVEFELVGGGEGTPEQGRMTNKMSTKGALTFSPYLLSHV
 MGYGFYHFGTYPSGYENPFLHAINNGGYTNTRIEKYEDGGVLHVSFSYRYEAGRVIGDFKVMGTGFPED
 SVIFTDKIIRS NATVEHLHPMGDNDLDGSFTRTFSLRDGGYSSVVD SHMHFKSAIHPSILQNGGPMFA
 FRRVEEDHSNTELGIVEYQHAFKTPDADAGEERV

Restriction Sites: SgfI-MluI

Cloning Scheme:



ACCN: NM_001282566

ORF Size: 789 bp

OTI Disclaimer: The molecular sequence of this clone aligns with the gene accession number as a point of reference only. However, individual transcript sequences of the same gene can differ through naturally occurring variations (e.g. polymorphisms), each with its own valid existence. This clone is substantially in agreement with the reference, but a complete review of all prevailing variants is recommended prior to use. [More info](#)

OTI Annotation: This clone was engineered to express the complete ORF with an expression tag. Expression varies depending on the nature of the gene.

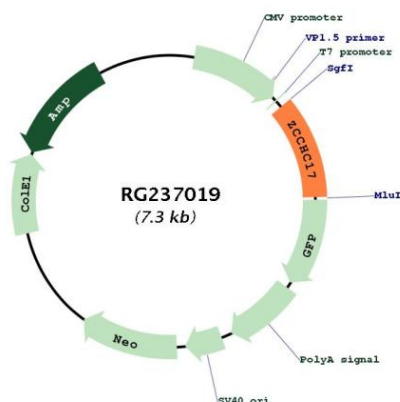
Components: The ORF clone is ion-exchange column purified and shipped in a 2D barcoded Matrix tube containing 10ug of transfection-ready, dried plasmid DNA (reconstitute with 100 ul of water).

RefSeq: [NM_001282566.1](#), [NP_001269495.1](#)

RefSeq Size: 1652 bp

RefSeq ORF: 792 bp

Locus ID: 51538
 UniProt ID: [Q9NP64](#)
 Cytogenetics: 1p35.2
 MW: 30 kDa

Product images:


Circular map for RG237019