

Product datasheet for **RG237006**

Chimaerin 2 (CHN2) (NM_001293081) Human Tagged ORF Clone

Product data:

Product Type:	Expression Plasmids
Product Name:	Chimaerin 2 (CHN2) (NM_001293081) Human Tagged ORF Clone
Tag:	TurboGFP
Symbol:	CHN2
Synonyms:	ARHGAP3; BCH; CHN2-3; RHOGAP3
Mammalian Cell Selection:	Neomycin
Vector:	pCMV6-AC-GFP (PS100010)
E. coli Selection:	Ampicillin (100 ug/mL)
ORF Nucleotide Sequence:	>RG237006 representing NM_001293081. Blue=ORF Red=Cloning site Green=Tag(s)

```
GCTCGTTTAGTGAACCGTCAGAATTTGTAAACGACTCACTATAGGGCGCCGGGAATTCGTCGACTG
GATCCGGTACCGAGGAGATCTGCCGCCGCGATCGCC
ATGCGAGTCACCTATCGTGGTCTCTGGCACCCAGTCCACACGTTCCGAGGCCCACTGGTGTGAATAT
TGTGCCAATTTTCATGTGGGGCTCATCGCCCAAGGGTCCGGTGCTCAGACTGTGGATTGAACGTACAC
AAACAGTGTTCCAAGCACGTTCCAATGACTGCCAACCTGATCTCAAGAGGATCAAGAAAGTGTACTGT
TGTGACCTCACAACACTTGTGAAGGCTCACAACACTCAGAGACCCATGGTGGTAGACATATGCATTCCG
GAAATTGAAGCAAGAGGATTAATAATCGGAAGGCCCTTACAGAGTCTCTGGTTCACTGAACACATTGAA
GATGTCAAATGGCATTGACAGAGATGGTAAAAGGCCGATATATCTGCCAATGTCTATCCAGACATA
AACATCATCACTGGAGCCCTAAACTGTATTTAGAGACTTACCCATCCCTGTCATCACATATGATACC
TATTCCAAATTTATAGATGCAGCAAAAATCTCCAATGCAGATGAGAGGCTGGAAGCCGCTCATGAAGTG
CTGATGCTGCTGCCTCTGCCACTATGAAACCCTCCGGTACCTAATGATCCACCTCAAAAAGGTTACT
ATGAATGAAAAGACAATTTTCATGAATGCAGAAAATCTGGGGATCGTGTTGGGCCCACTCTGATGAGG
CCCCCTGAGGACAGCACCTGACCACCTGCATGATATGCCGTACCAAAAGCTGATTGTGCAGATTTTA
ATAGAAAACGAAGACGTTTTATTTC
ACGCGTACGCGGCCGCTCGAG - GFP Tag - GTTAAAC
```



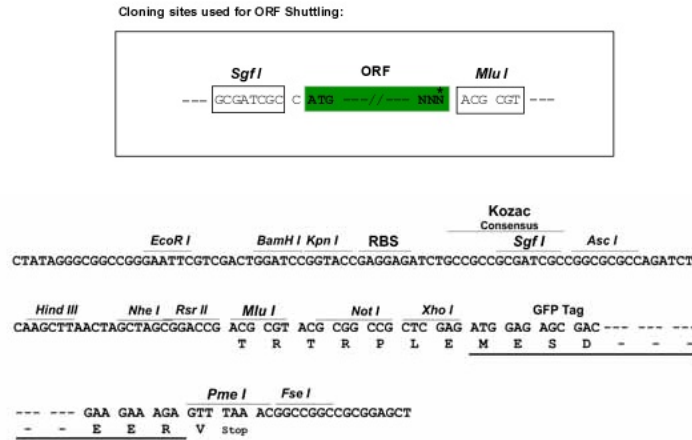
[View online »](#)

Protein Sequence: >Peptide sequence encoded by RG237006
 Blue=ORF Red=Cloning site Green=Tag(s)

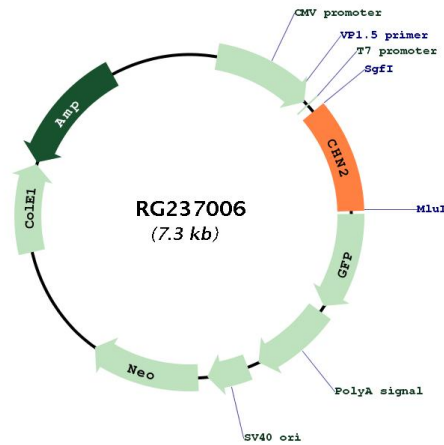
MRVTYRGLWHPVHTFRGPHWCEYCANFMWGLIAQGVRCSDCGLNVHKQCSKHVPNDCQPDLKRIKKVYC
 CDLTTLVKAHNTQRPMVVDICIREIEARGLKSEGLYRVSGFTEHIEDVKMAFDRDGEKADISANVYPDI
 NIITGALKLYFRDLPPIPVITYDYTSKFIIDAAKISNADERLEAVHEVLMMLPPAHYETLRYLMIHLKKVT
 MNEKDNFMNAENLGI VFGPTLMRPPEDSTLTLHDMRYQKLIVQIL IENEDVLF
 TRTRPLEMESDESGLPAMEIECRITGTLNGVEFELVGGGEGTPEQGRMTNKMKSTKGALTFSPYLLSHV
 MGYGFYHFGTYP SGYENPFLHAINNGGYTNTRIEKYEDGGVLHVSFSYRYEAGRVIGDFKVMGTGFPED
 SVIFTDKIIRS NATVEHLHPMGDNDLDGSFTRTFSLRDGGYSSVVD SHMHFKSAIHPSILQNGGPMFA
 FRRVEEDHSNTELGIVEYQHAFKTPDADAGEERV

Restriction Sites: SgfI-MluI

Cloning Scheme:



Plasmid Map:



ACCN: NM_001293081

ORF Size:	783 bp
OTI Disclaimer:	The molecular sequence of this clone aligns with the gene accession number as a point of reference only. However, individual transcript sequences of the same gene can differ through naturally occurring variations (e.g. polymorphisms), each with its own valid existence. This clone is substantially in agreement with the reference, but a complete review of all prevailing variants is recommended prior to use. More info
OTI Annotation:	This clone was engineered to express the complete ORF with an expression tag. Expression varies depending on the nature of the gene.
Components:	The ORF clone is ion-exchange column purified and shipped in a 2D barcoded Matrix tube containing 10ug of transfection-ready, dried plasmid DNA (reconstitute with 100 ul of water).
RefSeq:	NM_001293081.1 , NP_001280010.1
RefSeq Size:	2530 bp
RefSeq ORF:	786 bp
Locus ID:	1124
Cytogenetics:	7p14.3
MW:	30.6 kDa
Gene Summary:	This gene encodes a guanosine triphosphate (GTP)-metabolizing protein that contains a phorbol-ester/diacylglycerol (DAG)-type zinc finger, a Rho-GAP domain, and an SH2 domain. The encoded protein translocates from the cytosol to the Golgi apparatus membrane upon binding by diacylglycerol (DAG). Activity of this protein is important in cell proliferation and migration, and expression changes in this gene have been detected in cancers. A mutation in this gene has also been associated with schizophrenia in men. Alternative transcript splicing and the use of alternative promoters results in multiple transcript variants. [provided by RefSeq, May 2014]