

Product datasheet for **RG236997**

MBD3 (NM_001281454) Human Tagged ORF Clone

Product data:

Product Type:	Expression Plasmids
Product Name:	MBD3 (NM_001281454) Human Tagged ORF Clone
Tag:	TurboGFP
Symbol:	MBD3
Mammalian Cell Selection:	Neomycin
Vector:	pCMV6-AC-GFP (PS100010)
E. coli Selection:	Ampicillin (100 ug/mL)
ORF Nucleotide Sequence:	>RG236997 representing NM_001281454. Blue=ORF Red=Cloning site Green=Tag(s)

```
GCTCGTTTAGTGAACCGTCAGAATTTTGTAAACGACTCACTATAGGGCGGCCGGGAATTCGTCGACTG
GATCCGGTACCGAGGAGATCTGCCGCCGCGATCGCC
ATGGAGCGGAAGAGCCCGAGCGGGAAGAAGTCCCGCAGCAAGCCGCAGCTGGCGGCTACCTGGGCGGC
TCCATGGACCTGAGCACCTTCGACTTCCGCACGGGCAAGATGCTGATGAGCAAGATGAACAAGAGCCGC
CAGCGCGTGCGCTACGACTCCTCCAACCAAGGTCAAGGGCAAGCCCGACCTGAACACGGCGCTGCCCGTG
CGCCAGACGGCGTCCATCTTCAAGCAGCCGGTGACCAAGATTACCAACCACCCAGCAACAAGGTCAAG
AGCGACCCGCAGAAGGCGGTGGACCAGCCGCGCCAGCTCTTCTGGGAGAAGAAGCTGAGCGGCTGAAC
GCCTTCGACATTGCTGAGGAGTGGTCAAGACCATGGACCTCCCAAGGGCCTGCAGGGGTGGGACCT
GGCTGCACGGATGAGACGCTGCTGTCGGCCATCGCCAGCGCCCTGCACACTAGCACCATGCCCATCACG
GGACAGCTCTCGGCCCGCTGGAGAAGAACCCCGCGTATGGCTCAACACCACGCAGCCCTGTGCAAAA
GCCTTCATGGTGACCGACGAGGACATCAGGAAGCAGGAAGAGCTGGTGCAGCAGGTGCGGAAGCGGCTG
GAGGAGGCGTGATGGCCGACATGCTGGCGCACGTGGAGGAGCTGGCCCGTGACGGGGAGGCGCCGCTG
GACAAGGCTGCGCTGAGGACGACGACGAGGAAGACGAGGAGGAGGAGGAGGAGGAGGCCGACCCGGAC
CCGGAGATGGAGCACGTC
ACGCGTACGCGGCCGCTCGAG - GFP Tag - GTTTAAAC
```



[View online »](#)

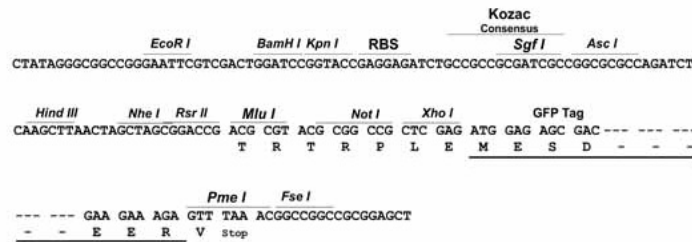
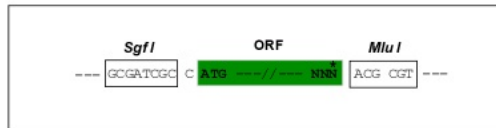
Protein Sequence: >Peptide sequence encoded by RG236997
 Blue=ORF Red=Cloning site Green=Tag(s)

MERKSPSGKKFRSKPQLARYLGGSDLSTDFRTGKMLMSKMNKSQRQVRVYDSSNQVKGKPDNLALPV
 RQTASIFKQPVTKITNHPNKNKSDPQKAVDQPRQLFWEKKLSGLNAFDIAEELVKTMDLPKGLQGVGP
 GCTDETLLSAIASALHTSTMPITGQLSAAVEKNPGVWLNNTQPLCKAFMVTDEDIRKQEELVQVQRKRL
 EEALMADMLAHVEELARDGEAPLDKACAEDDDEEEEEEEEPDPPEMEHV
 TRTRPLEMESDESGLPAMEIECRITGTLNGVEFELVGGEGTPEQGRMTNKMSTKGALTFSPYLLSHV
 MGYGFYHFGTYPSGYENPFLHAINNGGYTNTRIEKYEDGGVLHVSFSYRYEAGRVIGDFKVMGTGFPEP
 SVIFTDKIIRSNAIVEHLHPMGDNDLDGSFTRTFSLRDGGYSSVVDSHMHFKSAIHPSILQNGGPMFA
 FRRVEEDHSNTELGIVEYQHAFKTPDADAGEERV

Restriction Sites: Sgfl-MluI

Cloning Scheme:

Cloning sites used for ORF Shuttling:



ACCN: NM_001281454

ORF Size: 777 bp

OTI Disclaimer: The molecular sequence of this clone aligns with the gene accession number as a point of reference only. However, individual transcript sequences of the same gene can differ through naturally occurring variations (e.g. polymorphisms), each with its own valid existence. This clone is substantially in agreement with the reference, but a complete review of all prevailing variants is recommended prior to use. [More info](#)

OTI Annotation: This clone was engineered to express the complete ORF with an expression tag. Expression varies depending on the nature of the gene.

Components: The ORF clone is ion-exchange column purified and shipped in a 2D barcoded Matrix tube containing 10ug of transfection-ready, dried plasmid DNA (reconstitute with 100 ul of water).

RefSeq: [NM_001281454.2](#)

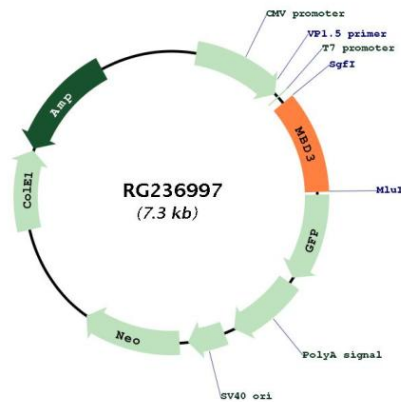
RefSeq Size: 2417 bp

RefSeq ORF: 780 bp

Locus ID: 53615
UniProt ID: [O95983](#)
Cytogenetics: 19p13.3
Protein Families: Druggable Genome, Transcription Factors
MW: 29.5 kDa

Gene Summary: DNA methylation is the major modification of eukaryotic genomes and plays an essential role in mammalian development. This gene belongs to a family of nuclear proteins which are characterized by the presence of a methyl-CpG binding domain (MBD). The encoded protein is a subunit of the NuRD, a multisubunit complex containing nucleosome remodeling and histone deacetylase activities. Unlike the other family members, the encoded protein is not capable of binding to methylated DNA. The protein mediates the association of metastasis-associated protein 2 with the core histone deacetylase complex. Alternative splicing results in multiple transcript variants of this gene. [provided by RefSeq, Jul 2013]

Product images:



Circular map for RG236997