

## Product datasheet for **RG236989**

### GRAP2 (NM\_001291826) Human Tagged ORF Clone

#### Product data:

Product Type:	Expression Plasmids
Product Name:	GRAP2 (NM_001291826) Human Tagged ORF Clone
Tag:	TurboGFP
Symbol:	GRAP2
Synonyms:	GADS; GRAP-2; GRB2L; GRBLG; GrbX; Grf40; GRID; GRPL; Mona; P38
Mammalian Cell Selection:	Neomycin
Vector:	pCMV6-AC-GFP (PS100010)
E. coli Selection:	Ampicillin (100 ug/mL)
ORF Nucleotide Sequence:	>RG236989 representing NM_001291826. Blue=ORF Red=Cloning site Green=Tag(s)

```
GCTCGTTTAGTGAACCGTCAGAATTTGTAAACGACTCACTATAGGGCGCCGGGAATTCGTCGACTG
GATCCGGTACCGAGGAGATCTGCCGCCGCGATCGCC
ATGGGCAAGGAGGTTGGCTTCTTCATCATCCGGGCCAGCCAGAGCTCCCCAGGGGACTTCTCCATCTCT
GTCAGGCATGAGGATGACGTTCAACACTTCAAGGTCATGCGAGACAACAAGGTAATTACTTTCTGTGG
ACTGAGAAGTTTCCATCCCTAAATAAGCTGGTAGACTACTACAGGACAAATTCATCTCCAGACAGAAG
CAGATCTTCTTAGAGACAGAACCCGAGAAGACCAGGGTCACCGGGCAACAGCCTGGACCGGAGGTCC
CAGGGAGGCCACACCTCAGTGGGGCTGTGGGAGAAGAAATCCGACCTTCGATGAACCGGAAGCTGTCC
GATCACCCCGACCCCTCCCCTGCAGCAGCACCAGCACCAGCCACAGCCTCCGCAATATGCCCCAGCG
CCCCAGCAGCTGCAGCAGCCCCACAGCAGCGATATCTGCAGCACCACCATTTCCACCAGGAACGCCGA
GGAGGCAGCCTTGACATAAATGATGGGCATTGTGGCACCAGGCTTGGGCAGTGAAATGAATGCGGCCCTC
ATGCATCGGAGACACACAGACCCAGTGCAGCTCCAGGCGGCAGGGCGAGTGCAGTGGGCCCGGGCGCTG
TATGACTTTGAGGCCCTGGAGGATGACGAGCTGGGGTTCCACAGCGGGGAGGTGGTGGAGGTCTGGAT
AGCTCAAACCATCTGGTGGACCGCCGCTGCACAACAAGCTGGGCCTTTCCTGCCAACTACGTG
GCACCCATGACCCGA
ACGCGTACGCGGCCGCTCGAG - GFP Tag - GTTAAAC
```



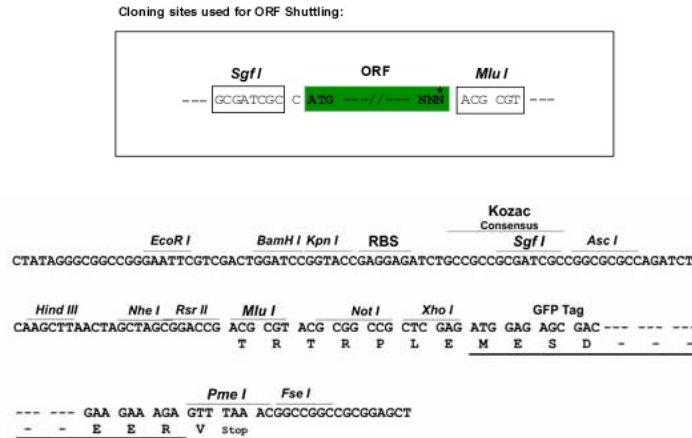
[View online »](#)

**Protein Sequence:** >Peptide sequence encoded by RG236989  
 Blue=ORF Red=Cloning site Green=Tag(s)

MGKEVGGFFIIRASQSSPGDFISIVRHEDDVQHFVMDNKGNYFLWTEKFPNKLVDYYRTNSISRQK  
 QIFLRDRTRTDQGHGRNSLDRRSQGGPHLSGAVGEEIRPSMNRKLSHPPTLPLQQHQHPQPQYAPA  
 PQQLPQPPQQRYLQHHHFHQERRGSLDINDGHCCTGLGSEMNAALMHRRHDPVQLQAAGRVRWARAL  
 YDFEALEDDELGFHSGEVVEVLDSNPSWWTGRLHNKLG LFPANYVAPMTR  
 TRTRPLEMESDESGLPAMEIECRITGTLNGVEFELVGGGEGTPEQGRMTNKMSTKGALTFSPYLLSHV  
 MGYGFYHFGTYPSGYENPFLHAINNGGYTNTRIEKYEDGGVLHVSFSYRYEAGRVIIGDFKVMGTGFPED  
 SVIFTDKIIRS NATVEHLHPMGDNDLDGSFTRTFSLRDGGYSSVVD SHMHFKSAIHPSILQNGGPMFA  
 FRRVEEDHSNTELGIVEYQHAFKTPDADAGEERV

**Restriction Sites:** SgfI-MluI

**Cloning Scheme:**



**ACCN:** NM\_001291826

**ORF Size:** 774 bp

**OTI Disclaimer:** The molecular sequence of this clone aligns with the gene accession number as a point of reference only. However, individual transcript sequences of the same gene can differ through naturally occurring variations (e.g. polymorphisms), each with its own valid existence. This clone is substantially in agreement with the reference, but a complete review of all prevailing variants is recommended prior to use. [More info](#)

**OTI Annotation:** This clone was engineered to express the complete ORF with an expression tag. Expression varies depending on the nature of the gene.

**Components:** The ORF clone is ion-exchange column purified and shipped in a 2D barcoded Matrix tube containing 10ug of transfection-ready, dried plasmid DNA (reconstitute with 100 ul of water).

**RefSeq:** [NM\\_001291826.2](#)

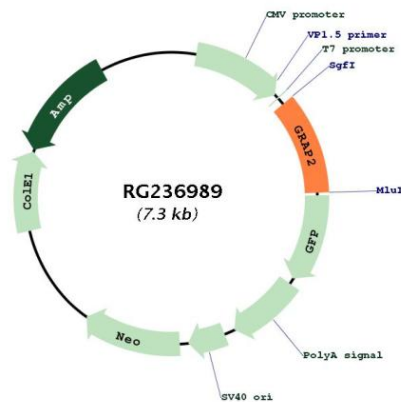
**RefSeq Size:** 3436 bp

**RefSeq ORF:** 777 bp

**Locus ID:** 9402  
**Cytogenetics:** 22q13.1  
**Protein Families:** Druggable Genome  
**Protein Pathways:** T cell receptor signaling pathway  
**MW:** 30.1 kDa

**Gene Summary:** This gene encodes a member of the GRB2/Sem5/Drk family. This member is an adaptor-like protein involved in leukocyte-specific protein-tyrosine kinase signaling. Like its related family member, GRB2-related adaptor protein (GRAP), this protein contains an SH2 domain flanked by two SH3 domains. This protein interacts with other proteins, such as GRB2-associated binding protein 1 (GAB1) and the SLP-76 leukocyte protein (LCP2), through its SH3 domains. Multiple alternatively spliced transcript variants encoding distinct isoforms have been found for this gene. [provided by RefSeq, Apr 2014]

### Product images:



Circular map for RG236989