

## Product datasheet for **RG236982**

### **C11orf54 (NM\_001286071) Human Tagged ORF Clone**

#### Product data:

Product Type:	Expression Plasmids
Product Name:	C11orf54 (NM_001286071) Human Tagged ORF Clone
Tag:	TurboGFP
Symbol:	C11orf54
Synonyms:	PTD012; PTOD012
Mammalian Cell Selection:	Neomycin
Vector:	pCMV6-AC-GFP (PS100010)
E. coli Selection:	Ampicillin (100 ug/mL)
ORF Nucleotide Sequence:	>RG236982 representing NM_001286071. Blue=ORF Red=Cloning site Green=Tag(s)

```
GCTCGTTTAGTGAACCGTCAGAATTTTGTAAACGACTCACTATAGGGCGCCGGGAATTCGTCGACTG
GATCCGGTACCGAGGAGATCTGCCGCCGCGATCGCC
ATGGCTTGCTGCTGAGTTTTCTTTTCATGTACCAAGTCTTGAAGAGCTTGCTGGAGTTATGCAGAAGGGG
TAAAAGATAACTTTGCTGATGTCCAGGTCTCTGTAGTTGATTGCCCTGATTTGACTAAGGAACCCTTT
ACCTTTCCTGTAAAAGGCATCTGTGGGAAACTAGAATTGCAGAAGTTGGAGGTGTCCTTACTTATTG
CCTTTGTAACCAAAAAAAGTTTATGATCTGAATAAAATTGCAAAGAAATCAAGCTGCCTGGAGCC
TTTATTCTTGAGCAGGAGCAGGTCCATTTCAGACTCTCGGGTTCAATTCTGAGGTAATTGAGGTGAAA
GCCAAAAGAAGAACTGGACCACTTAACCTTTGTGACTTGTATGAGAGAGACCCTGGAAAAACATTATGGA
AATAAGCCTATAGGAATGGGAGTACTTTCATAATTCAGAAGGGAAAAGTGAAGTCTCACATTATGCCT
GCAGAATTTTCTCCTGCCCTTGAACCTCTGATGAAGAAGTGAATAAATGGTTGCATTTTATGAAATG
AAAGCTCCTTTGGTTTGTCTACCAAGTTTTGTCTCCAGAGACCCAGGTTTGATTGCGACTGGAGCAC
ACTCATTTTTTATGTCGTCATGGAGAAGGTGGACACTACCATTATGACACTACTCCAGATATAGTGGAA
TATCTGGATACTTCTTACCTGCAGAGTTTCTCTATCGCATTGATCAACCAAAAGAGACGCATTCAATT
GGGCGAGAT
ACGCGTACGCGGCCGCTCGAG - GFP Tag - GTTTAAAC
```



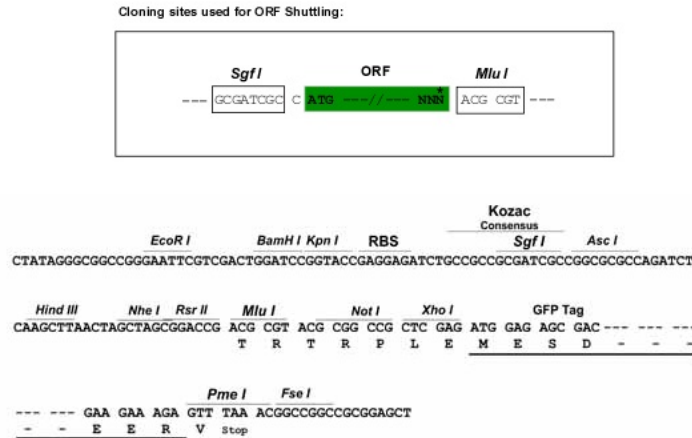
[View online »](#)

**Protein Sequence:** >Peptide sequence encoded by RG236982  
 Blue=ORF Red=Cloning site Green=Tag(s)

MACAEFSFHVPSLEELAGVMQKGLKDNFADVQVSVVDCPDLTKEPFTFPVKIGICGKTRIAEVGGVPYLL  
 PLVNQKKVYDLNKAKEIKLPGAFILGAGAGPFQTLGFNSEVIEVKAKRRRTGPLNFVTCMRETLEKHYG  
 NKPIGMGGTFIIQKGVKSHIMPAEFSSCPLNSDEEVNKLWLFYEMKAPLVCLPVFVSRDPGFDLRLEH  
 THFFSRHGEAGHYDTPDIVEYLGFLPAEFLYRIDQPKETHSIGRD  
 TRTRPLEMESDESGLPAMEIECRITGTLNGVEFELVGGGEGTPEQGRMTNKMKSTKGALTFSPYLLSHV  
 MGYGFYHFGTYPSGYENPFLHAINNGGYTNTRIEKYEDGGVLHVSFSYRYEAGRVIGDFKVMGTGFPEP  
 SVIFTDKIIRSNAIVEHLHPMGDNDLDGSFTRTFSLRDGGYSSVVDSHMHFKSAIHPSILQNGGPMFA  
 FRRVEEDHSNTELGIVEYQHAFKTPDADAGEERV

**Restriction Sites:** SgfI-MluI

**Cloning Scheme:**



**ACCN:** NM\_001286071

**ORF Size:** 768 bp

**OTI Disclaimer:** The molecular sequence of this clone aligns with the gene accession number as a point of reference only. However, individual transcript sequences of the same gene can differ through naturally occurring variations (e.g. polymorphisms), each with its own valid existence. This clone is substantially in agreement with the reference, but a complete review of all prevailing variants is recommended prior to use. [More info](#)

**OTI Annotation:** This clone was engineered to express the complete ORF with an expression tag. Expression varies depending on the nature of the gene.

**Components:** The ORF clone is ion-exchange column purified and shipped in a 2D barcoded Matrix tube containing 10ug of transfection-ready, dried plasmid DNA (reconstitute with 100 ul of water).

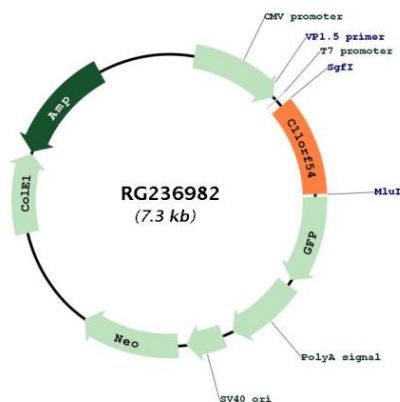
**RefSeq:** [NM\\_001286071.1](#), [NP\\_001273000.1](#)

**RefSeq Size:** 2417 bp

**RefSeq ORF:** 771 bp

Locus ID:	28970
UniProt ID:	<a href="#">Q9H0W9</a>
Cytogenetics:	11q21
MW:	29.1 kDa
Gene Summary:	Exhibits ester hydrolase activity on the substrate p-nitrophenyl acetate.[UniProtKB/Swiss-Prot Function]

### Product images:



Circular map for RG236982