

Product datasheet for **RG236981**

PRAS40 (AKT1S1) (NM_001278160) Human Tagged ORF Clone

Product data:

Product Type:	Expression Plasmids
Product Name:	PRAS40 (AKT1S1) (NM_001278160) Human Tagged ORF Clone
Tag:	TurboGFP
Symbol:	PRAS40
Synonyms:	Lobe; PRAS40
Mammalian Cell Selection:	Neomycin
Vector:	pCMV6-AC-GFP (PS100010)
E. coli Selection:	Ampicillin (100 ug/mL)
ORF Nucleotide Sequence:	>RG236981 representing NM_001278160. Blue=ORF Red=Cloning site Green=Tag(s)

```
GCTCGTTTAGTGAACCGTCAGAATTTTGTAAACGACTCACTATAGGGCGGCCGGGAATTCGTCGACTG
GATCCGGTACCGAGGAGATCTGCCGCCGCGATCGCC
ATGGCGTCGGGGCGCCCCGAGGAGCTGTGGGAGGCCGTGGTGGGGCCGCTGAGCGCTTCCGGGCCCCG
ACTGGCACGGAGCTGGTGTCTGACCGCGGCCCGCCGCCACCACCCCGCCGGGCCCTGTGCCTAT
GCTGCCCATGGTCGAGGAGCCCTGGCGGAGGCAGCGGCCGTTGCCTCCACGACATCGCACTGGCCAC
AGGGCTGCCACTGCTGCTCGGCCTCCTGCGCCCCACCAGCACCACGCCACCCAGTCCCACACCCAGC
CCACCCCGGCCTACCCTGGCCAGAGAGGACAACGAGGAGGACGAGGATGAGCCCACAGAGACAGAGACC
TCCGGGGAGCAGCTGGGCATTAGTGATAATGGAGGGCTCTTTGTGATGGATGAGGACGCCACCCTCCAG
GACCTTCCCCCTTCTGTGAGTCAGACCCCGAGAGTACAGATGATGGCAGCCTGAGCGAGGAGACCCCC
GCCGGCCCCCCCACCTGCTCAGTGCCCCAGCCTCAGCCCTACCCACACAGCAGTACGCCAAGTCCCTG
CCTGTGTCTGTGCCCGTCTGGGGCTTCAAGGAGAAGAGGACAGAGGCGCGGTTCATCAGATGAGGAGAAT
GGGCCGCCCTTTCGCCCGACCTGGACCGCATCGCGGCGAGCATGCGCGCGCTGGTGTGCGAGAGGCC
GAGGACACCCAGGTCTTCGGGGACCTGCCACGGCCGCGGCTTAACACCAGCGACTCCAGAAGCTGAAG
CGGAAATAT
ACGCGTACGCGGCCGCTCGAG - GFP Tag - GTTTAAAC
```



[View online »](#)

Protein Sequence: >Peptide sequence encoded by RG236981
Blue=ORF Red=Cloning site Green=Tag(s)

MASGRPEELWEAVVGAERFRARTGTEL VLLTAAPPPPPRPGPCAYAAHGRGALAEAARRCLHDIALAH
 RAATAARPPAPPAPQPPSPTSPRRPTLAREDNEDEDEPTE TETSGEQLGISDNGGLFVMDDEDATLQ
 DLPPFCESDPESTDGSLSEETPAGPPTCSVPPASALPTQYAKSLPVSVPVWGFKEKRTEARSSDEEN
 GPPSSPDLRIAASMRALVLEAEDTQVFGDLPRPRLNTSDFQKLKRKY
TRTRPLEMESDESGLPAMEIECRITGTLNGVEFELVGGGEGTPEQGRMTNKMKSTKGALTFSPYLLSHV
MGYGFYHFGTYPSGYENPFLHAINNGGYTNTRIEKYEDGGVLHVSFSYRYEAGRVIGDFKVMGTGFPE
SVIFTDKIIRSNAIVEHLHPMGDNDLDGSFTRTFSLRDGGYSSVVDSHMHFKSAIHPSILQNGGPMFA
FRRVEEDHSNTELGIVEYQHAFKTPDADAGEERV

Restriction Sites: SgfI-MluI

Cloning Scheme:



ACCN: NM_001278160

ORF Size: 768 bp

OTI Disclaimer: The molecular sequence of this clone aligns with the gene accession number as a point of reference only. However, individual transcript sequences of the same gene can differ through naturally occurring variations (e.g. polymorphisms), each with its own valid existence. This clone is substantially in agreement with the reference, but a complete review of all prevailing variants is recommended prior to use. [More info](#)

OTI Annotation: This clone was engineered to express the complete ORF with an expression tag. Expression varies depending on the nature of the gene.

Components: The ORF clone is ion-exchange column purified and shipped in a 2D barcoded Matrix tube containing 10ug of transfection-ready, dried plasmid DNA (reconstitute with 100 ul of water).

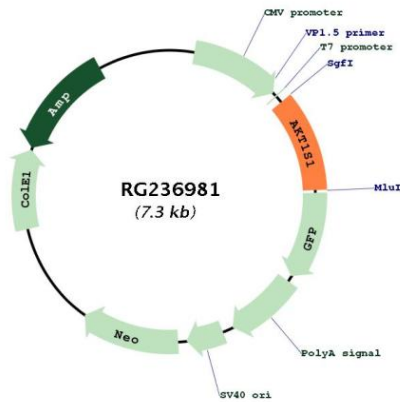
RefSeq: [NM_001278160.1](#), [NP_001265089.1](#)

RefSeq Size: 1849 bp

RefSeq ORF: 771 bp

Locus ID: 84335
UniProt ID: [Q96B36](#)
Cytogenetics: 19q13.33
MW: 27.4 kDa
Gene Summary: AKT1S1 is a proline-rich substrate of AKT (MIM 164730) that binds 14-3-3 protein (see YWHAH, MIM 113508) when phosphorylated (Kovacina et al., 2003 [PubMed 12524439]).[supplied by OMIM, Mar 2008]

Product images:



Circular map for RG236981