

## Product datasheet for **RG236965**

### **RAB3IP (NM\_001278402) Human Tagged ORF Clone**

#### Product data:

Product Type:	Expression Plasmids
Product Name:	RAB3IP (NM_001278402) Human Tagged ORF Clone
Tag:	TurboGFP
Symbol:	RAB3IP
Synonyms:	RABIN3; RABIN8
Mammalian Cell Selection:	Neomycin
Vector:	pCMV6-AC-GFP (PS100010)
E. coli Selection:	Ampicillin (100 ug/mL)
ORF Nucleotide Sequence:	>RG236965 representing NM_001278402. Blue=ORF Red=Cloning site Green=Tag(s)

```
GCTCGTTTAGTGAACCGTCAGAATTTTGTAAACGACTCACTATAGGGCGCCGGGAATTCGTCGACTG
GATCCGGTACCGAGGAGATCTGCCGCCGCGATCGCC
ATGGTGAGAGAAGCAAATATCAAGCAGGCAACAGCAGAAAAACAGCTAAAAGAAGCACAAGGAAAAATT
GATGTACTTCAAGCTGAAGTAGCTGCATTGAAGACACTTGTATTGTCCAGTTCTCCAACATCACCTACG
CAGGAGCCTTTGCCAGGTGAAAGACACCTTTTAAAAAGGGGCATACAAGAAATAAAGCACAAGCAGT
GCTATGAGTGGCAGTCATCAGGACCTCAGTGTGATACAGCCAATTGTAAAAGACTGCAAAGAGGCTGAC
TTATCCTTGATAATGAATTCGATTGTGAAGGATGAGCCACAATGGACAGGACGTGCCTTTCTTA
GACAAAATCTACCAGGAAGATATCTTTCCATGTTAACATTCTCAAAAAGTGAGTTGGCTTCAGCTGTT
CTGGAGGCTGTGGAAAACAATACTCTAAGCATTGAACCAGTGGGATTACAACCTATCCGGTTTGTGAAA
GCTTCTGCAGTTGAATGCGGAGGACCAAAAAAATGTGCTCTCACTGGCCAGAGTAAGTCCTGTAACAC
AGAATTAATTAGGGGACTCAAGCAACTATTATTATTTCTCCTTTTGCAGATACAGGATCACTTCT
GTATGTAACCTTTTTTACATACATTTCGATACATTTCAGCAGGACTCGTGAACAGCAGGATGTTGATCAG
ATGTTTTGGGAGGTTATGCAGTTGAGAAAAGAGATGTCATTGGCAAAGCTGGGTTATTTCAAAGAGGAA
CTC
ACGCGTACGCGGCCGCTCGAG - GFP Tag - GTTTAAAC
```



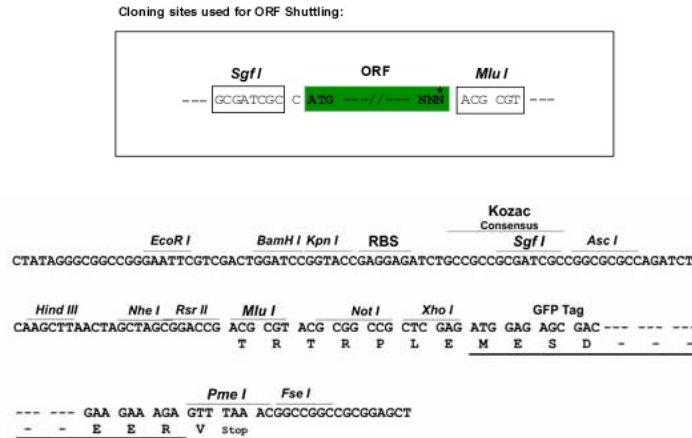
[View online »](#)

**Protein Sequence:** >Peptide sequence encoded by RG236965  
 Blue=ORF Red=Cloning site Green=Tag(s)

MVREANIKQATAEKQLKEAQGKIDVLQAEVAALKTLVLSPTSPTQEPLPGGKTPFKKGHTRNKSTSS  
 AMSSGSHQDL SVIQPIVKDCKEADLSLYNEFRLWKDEPTMDRTCPLFDKIYQEDIFPLTFKSSELASAV  
 LEAVENNTLSIEPVGLQPIRFVKASAVECGGPKKCALTGQSKSCKHRIKLGSSNYYYISPFRCRYRITS  
 VCNFFTYIRYIQQLVKQQDQVDFWVEMQLRKEMSLAKLGYFKEEL  
 TRTRPLEMESDESGLPAMEIECRITGTLNGVEFELVGGGEGTPEQGRMTNKMKSTKGALTFSPYLLSHV  
 MGYGFYHFGTYPSGYENPFLHAINNGGYTNTRIEKYEDGGVLHVSFSYRYEAGRVIGDFKVMGTGFPEP  
 SVIFTDKIIIRSNAVHLPMDNDLDGSFTRTFSLRDGGYSSVVDSHMHFKSAIHPSILQNGGPMFA  
 FRRVEEDHSNTELGIVEYQHAFKTPDADAGEERV

**Restriction Sites:** SgfI-MluI

**Cloning Scheme:**



**ACCN:** NM\_001278402

**ORF Size:** 762 bp

**OTI Disclaimer:** The molecular sequence of this clone aligns with the gene accession number as a point of reference only. However, individual transcript sequences of the same gene can differ through naturally occurring variations (e.g. polymorphisms), each with its own valid existence. This clone is substantially in agreement with the reference, but a complete review of all prevailing variants is recommended prior to use. [More info](#)

**OTI Annotation:** This clone was engineered to express the complete ORF with an expression tag. Expression varies depending on the nature of the gene.

**Components:** The ORF clone is ion-exchange column purified and shipped in a 2D barcoded Matrix tube containing 10ug of transfection-ready, dried plasmid DNA (reconstitute with 100 ul of water).

**RefSeq:** [NM\\_001278402.1](#), [NP\\_001265331.1](#)

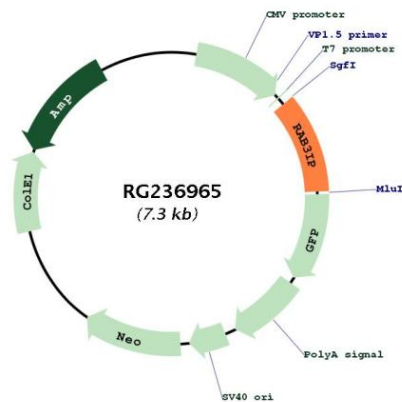
**RefSeq Size:** 8781 bp

**RefSeq ORF:** 765 bp

**Locus ID:** 117177  
**UniProt ID:** [Q96QF0](#)  
**Cytogenetics:** 12q15  
**MW:** 28.6 kDa

**Gene Summary:** Guanine nucleotide exchange factor (GEF) which may activate RAB8A and RAB8B. Promotes the exchange of GDP to GTP, converting inactive GDP-bound Rab proteins into their active GTP-bound form. Mediates the release of GDP from RAB8A and RAB8B but not from RAB3A or RAB5. Modulates actin organization and promotes polarized transport of RAB8A-specific vesicles to the cell surface. Together with RAB11A, RAB8A, the exocyst complex, PARD3, PRKCI, ANXA2, CDC42 and DNMBP promotes transcytosis of PODXL to the apical membrane initiation sites (AMIS), apical surface formation and lumenogenesis.[UniProtKB/Swiss-Prot Function]

### Product images:



Circular map for RG236965