

Product datasheet for **RG236960**

n-Myc (MYCN) (NM_001293231) Human Tagged ORF Clone

Product data:

Product Type:	Expression Plasmids
Product Name:	n-Myc (MYCN) (NM_001293231) Human Tagged ORF Clone
Tag:	TurboGFP
Symbol:	n-Myc
Synonyms:	bHLHe37; MODED; N-myc; NMYC; ODED
Mammalian Cell Selection:	Neomycin
Vector:	pCMV6-AC-GFP (PS100010)
E. coli Selection:	Ampicillin (100 ug/mL)
ORF Nucleotide Sequence:	>RG236960 representing NM_001293231. Blue=ORF Red=Cloning site Green=Tag(s)

```
GCTCGTTTAGTGAACCGTCAGAATTTTGTAAACGACTCACTATAGGGCGGCCGGGAATTCGTGACTG
GATCCGGTACCGAGGAGATCTGCCGCCGCGATCGCC
ATGCGGGGGCTCCTGGAACTGTGTTGGAGCCGAGCAAGCGCTAGCCAGGCGCAAGCGGCACAGACT
GTAGCCATCCGAGGACACCCCGCCCCCGGCCACCCGGAGACACCCGCGCAGAATCGCTCCGGAT
CCCCTGCAGTCGGCGGGAGATGATGAAGATGATGAAGAGGAAGATGAAGAGGAAGAAATCGACGTGGTC
ACTGTGGAGAAGCGGCTTCTCCTCCAACACCAAGGCTGTCACCACATTCACCATCACTGTGCGTCCC
AAGAACGCAGCCCTGGGTCCCGGAGGGCTCAGTCCAGCGAGCTGATCCTCAAACGATGCCTTCCCATC
CACCAGCAGCACAATATGCCGCCCCCTCTCCCTACGTGGAGAGTGAGGATGCACCCCCACAGAAGAAG
ATAAAGAGCGAGGCGTCCCACGTCCGCTCAAGAGTGTCATCCCCCAAAGGCTAAGAGCTTGAGCCCC
CGAAACTCTGACTCGGAGGACAGTGAGCGTCGCAGAAACCACAACATCCTGGAGCGCCAGCGCCGCAAC
GACCTTCGGTCCAGCTTTCTCACGCTCAGGGACCACGTGCCGGAGTTGGTAAAGAATGAGAAGGCCGCC
AAGGTGGTCATTTTGA AAAAGGCCACTGAGTATGTCCACTCCCTCCAGGCCGAGGAGCACCAGCTTTTG
CTGAAAAGGAAAAATTGCAGGCAAGACAGCAGCAGTTGCTAAAGAAAATTGAACACGCTCGGACTTGC
ACGCGTACGCGGCCGCTCGAG - GFP Tag - GTTTAAAC
```



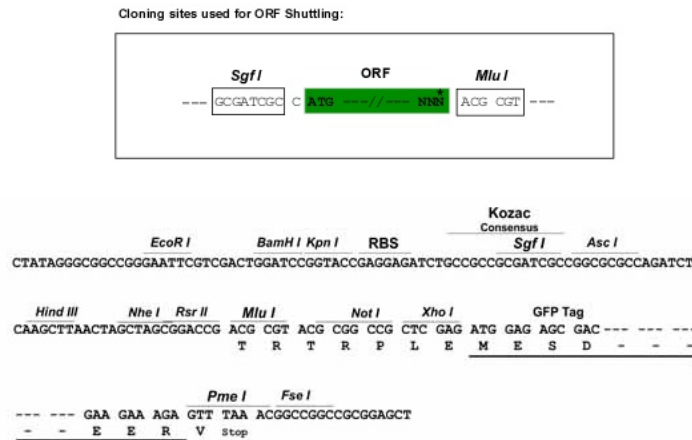
[View online »](#)

Protein Sequence: >Peptide sequence encoded by RG236960
 Blue=ORF Red=Cloning site Green=Tag(s)

MRGAPGNCVGAEQALARRKRAQTVAIRGHPRPPGPPGDTRAESPDPDPLQSAGDDEDEDEEIDVV
 TVEKRRSSNTKAVTTFITVVRPKNAALGPGRAQSSSELILKRCLPIHQQHNYAAPSPYVESEDAPPQKK
 IKSEASPRPLKSVIPPKAKSLSPRNSDSEDSERRRNHNILRQRNDLRSFSLTRDHPVPELVKNEKAA
 KVVILKKATEYVHSLQAEEHQLLLEKEKLQARQQQLLKKIEHARTC
 TRTRPLEMESDESGLPAMEIECRITGTLNGVEFELVGGGEGTPEQGRMTNKMKSTKGALTFSPYLLSHV
 MGYGFYHFGTYPSTYENPFLHAINNGGYTNTRIEKYEDGGVLHVSFSYRYEAGRVIGDFKVMGTGFPED
 SVIFTDKIIRSNTVEHLHPMGDNDLDGSFTRTFSLRDGGYSSVVDSHMHFKSAIHPSILQNGGPMFA
 FRRVEEDHSNTELGIVEYQHAFKTPDADAGEERV

Restriction Sites: SgfI-MluI

Cloning Scheme:



ACCN: NM_001293231

ORF Size: 759 bp

OTI Disclaimer: The molecular sequence of this clone aligns with the gene accession number as a point of reference only. However, individual transcript sequences of the same gene can differ through naturally occurring variations (e.g. polymorphisms), each with its own valid existence. This clone is substantially in agreement with the reference, but a complete review of all prevailing variants is recommended prior to use. [More info](#)

OTI Annotation: This clone was engineered to express the complete ORF with an expression tag. Expression varies depending on the nature of the gene.

Components: The ORF clone is ion-exchange column purified and shipped in a 2D barcoded Matrix tube containing 10ug of transfection-ready, dried plasmid DNA (reconstitute with 100 ul of water).

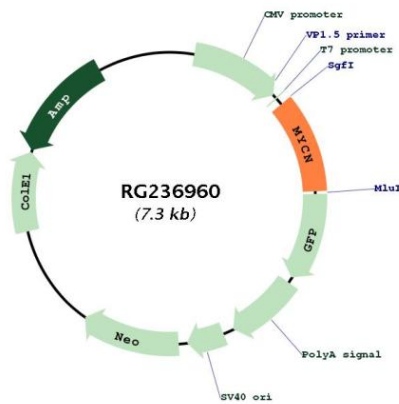
RefSeq: [NM_001293231.2](#)

RefSeq Size: 1829 bp

RefSeq ORF: 762 bp

Locus ID: 4613
UniProt ID: [P04198](#)
Cytogenetics: 2p24.3
Protein Families: Druggable Genome, Transcription Factors
MW: 28.8 kDa
Gene Summary: This gene is a member of the MYC family and encodes a protein with a basic helix-loop-helix (bHLH) domain. This protein is located in the nucleus and must dimerize with another bHLH protein in order to bind DNA. Amplification of this gene is associated with a variety of tumors, most notably neuroblastomas. Multiple alternatively spliced transcript variants encoding different isoforms have been found for this gene. [provided by RefSeq, Jun 2014]

Product images:



Circular map for RG236960