

Product datasheet for **RG236959**

LMCD1 (NM_001278234) Human Tagged ORF Clone

Product data:

Product Type: Expression Plasmids
Product Name: LMCD1 (NM_001278234) Human Tagged ORF Clone
Tag: TurboGFP
Symbol: LMCD1
Mammalian Cell Selection: Neomycin
Vector: pCMV6-AC-GFP (PS100010)
E. coli Selection: Ampicillin (100 ug/mL)
ORF Nucleotide Sequence: >RG236959 representing NM_001278234.
 Blue=ORF Red=Cloning site Green=Tag(s)

```
GCTCGTTTAGTGAACCGTCAGAATTTTGTAAACGACTCACTATAGGGCGGCCGGGAATTCGTCGACTG
GATCCGGTACCGAGGAGATCTGCCGCCGCGATCGCC
ATGTTTGGGATGCAAGGGGACGTGTTCCGGCTTCGAGCCACATTCATGGAGGGACTGCAGTACATGGAG
CTCATCCCAAGGAGAAGCAGCCAGTGACAGGCACAGAGGGTGCCTTTTACCGCCGCCGACGCTCATG
CACCAGCTCCCATCTATGACCAGGATCCCTCGCGCTGCCGTGGACTTTTGGAGAATGAGTTGAACTG
ATGGAAGAATTTGTCAAGCAATAAAGAGCGAGGCCCTCGGCGTGGGAGAAGTGGCCCTCCCGGGGACG
GGTGGCTTGCCCAAGGAGGAGGGGAAGCAGCAGGAAAAGCCAGAGGGGGCAGAGACCAGTCTGCTACC
ACCAACGGCAGTCTCAGTGACCCGTCCTCAAGAAGTGAATACGCTGCGAGCTCTGCAAGGGAGCGGCC
CCTCCTGACAGCCCGTGGTCTACTCGGACAGGGCAGGCTACAACAAGCAGTGGCACCCACCTGCTTTT
GTGTGTGCCAAGTCTCCGAGCCGCTGGTGGACCTCATCTACTTCTGGAAGGATGGTGCACCCTGGTGC
GGCCGCCATTACTGCGAGAGTCTGCGGCCCGGTGCTCCGGCTGCGATGAGATAATTCGCTGAGGAC
TACCAGCGTGTGGAAGATCTGGCCTGGCACCGAAAGCACTTTGTCTGTGAGGGTTGTGAGCAGTCTG
AGCGGCCGGGCGTACATCGTCACCAAGGGTCAGCTTCTGTGCCAACTTGACGCAAGTCCAACCGCTCC
ACGCGTACGCGGCCGCTCGAG - GFP Tag - GTTTAAAC
```

Protein Sequence: >Peptide sequence encoded by RG236959
 Blue=ORF Red=Cloning site Green=Tag(s)

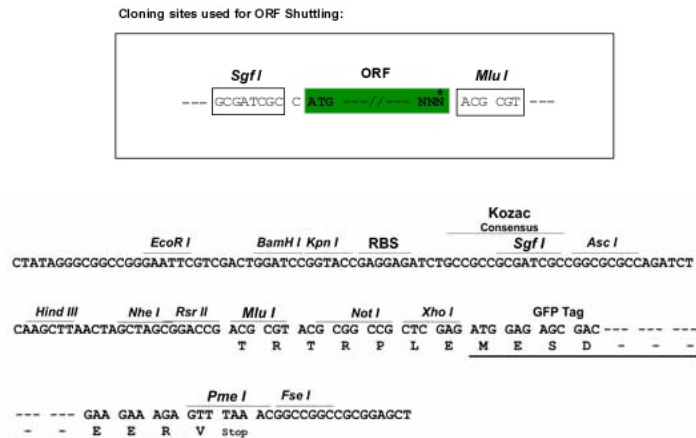
```
MFGMQGDVFLRATFMEGLQYMELIPKEKQPVVTGTEGAFYRRRQLMHQLPIYDQDPSRCRGLLENELKL
MEEFVKQYKSEALGVGEVALPGQGGLPKEEGKQEQEPEGAETTAATTNGSLSDPSKEVEYVCELCKGAA
PPDSPVVYSDRAGYNKQWHPTCFVCAKCEPLVDLIYFWKDGAPWCGRHYCESLRPRCSGCEIIFAED
YQRVEDLAWHRKHFVCEGCEQLLSGRAYIVTKGQLLCPCTCSKRS
TRTRPLEMESDESGLPAMEIECRITGTLNGVEFELVGGEGTPEQGRMTNKMSTKGALTFSPYLLSHV
MGYGFYHFGTYPSTYENPFLHAINNGGYTNTRIEKYEDGGVLHVSFSYRYEAGRVIGDFKVMGTGFPE
SVIFTDKIIRSNAIVEHLHPMGDNDLDGSFTRTFSLRDGGYSSVVDSDHMHFKSAIHPSILQNGGPMFA
FRRVEEDHSNTELGIVEYQHAFKTPDADAGEERY
```



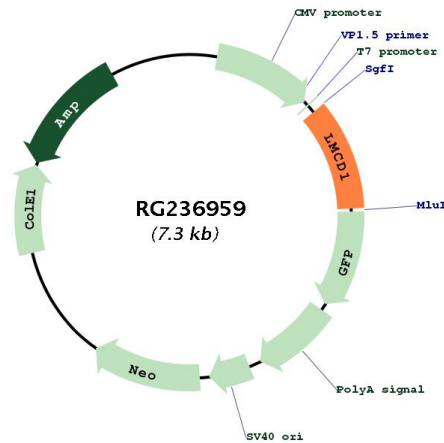
[View online >](#)

Restriction Sites: SgfI-MluI

Cloning Scheme:



Plasmid Map:



ACCN: NM_001278234

ORF Size: 759 bp

OTI Disclaimer: The molecular sequence of this clone aligns with the gene accession number as a point of reference only. However, individual transcript sequences of the same gene can differ through naturally occurring variations (e.g. polymorphisms), each with its own valid existence. This clone is substantially in agreement with the reference, but a complete review of all prevailing variants is recommended prior to use. [More info](#)

OTI Annotation: This clone was engineered to express the complete ORF with an expression tag. Expression varies depending on the nature of the gene.

Components:	The ORF clone is ion-exchange column purified and shipped in a 2D barcoded Matrix tube containing 10ug of transfection-ready, dried plasmid DNA (reconstitute with 100 ul of water).
RefSeq:	<u>NM_001278234.1, NP_001265163.1</u>
RefSeq Size:	1501 bp
RefSeq ORF:	762 bp
Locus ID:	29995
UniProt ID:	<u>Q9NZU5</u>
Cytogenetics:	3p25.3
MW:	29 kDa
Gene Summary:	This gene encodes a member of the LIM-domain family of zinc finger proteins. The encoded protein contains an N-terminal cysteine-rich domain and two C-terminal LIM domains. The presence of LIM domains suggests involvement in protein-protein interactions. The protein may act as a co-regulator of transcription along with other transcription factors. Alternate splicing results in multiple transcript variants of this gene. [provided by RefSeq, May 2013]