

Product datasheet for **RG236943**

TGIF (TGIF1) (NM_001278686) Human Tagged ORF Clone

Product data:

Product Type:	Expression Plasmids
Product Name:	TGIF (TGIF1) (NM_001278686) Human Tagged ORF Clone
Tag:	TurboGFP
Symbol:	TGIF
Synonyms:	HPE4; TGIF
Mammalian Cell Selection:	Neomycin
Vector:	pCMV6-AC-GFP (PS100010)
E. coli Selection:	Ampicillin (100 ug/mL)
ORF Nucleotide Sequence:	>RG236943 representing NM_001278686. Blue=ORF Red=Cloning site Green=Tag(s)

```
GCTCGTTTGTGAAACCGTCAGAAATTTGTAATACGACTCACTATAGGGCGGCCGGGAATTCGTCGACTG
GATCCGGTACCGAGGAGATCTGCCGCCGCGATCGCC
RCATGGTTCTAGCGCAGAGCCGGGTGTCTGCCGGGTGGGCTCCCCGATTGTTCCGGCTCCGGCGGGG
GCGGCTCTGATTCCTTTCCATGGCCCGCTCCACCCCGGAATCCGCAGTGCTCCTTTCCACGGCTT
TTCTGGCGTCCCCCGACTCTCCCGGGCACTTTGGCCTACCTTCCCCCAGCGCCGTGGTCTCCTCGG
CGACCCCTCTGCGCTCCTGGGGTCTCCTGCGCCCCCTCCTCCACCGCGCGCTGCCACAGCCGC
GTGCCCTCTCCAGGAGCTGGGACCAAGGCTGGGCCCGCCGCGCATCGGTGGAACTTCCGCGGT
CCCCATCCAGGGCGCACAGGTCAGCTCCTCGCGCCGACTCCTGAAAACAATGAAAGGTATTGTTG
CAGCATCTGGCAGTGAGACTGAGGATGAGGACAGCATGGACATTCCTTTGGACCTTTCTTCATCCGCTG
GCTCAGGAAGAGAAGGAGAAGGGCAACCTACCAAGGAGTCTGTGCAGATTCTTCGGGATTGGCTGT
ATGAGCACCGTTACAATGCCTATCCTTCAGAGCAAGAAAAAGCGTTGCTGTCCAGCAAAACACACCTGT
CTACGCTACAGGTCTGTAAGTGGTTCATCAACGCCCGCCGAGGCTCCTCCCTGACATGCTGAGAAAAGG
ATGGCAAAGATCCAAATCAGTTCACAATTTCCCGCCGTGGGGCCAAGATTTCTGAAACGAGCTCTGTGG
AGTCCGTGATGGGCATCAAAAATTTCATGCCAGCTCTAGAGGAGACCCCATTTTCATTCTGTACAGCTG
GGCAAACCCCAACCCTAGGGAGGCCACTGTCTCCTAAGCCGTCATCCCCGGGATCAGTTTGGCTCGTC
CATCAGTGATCTGCCATACCACTGTGACTGCATTGAAAGATGTCCCTTTCTCTCTGCCAGTCGGTCCG
GTGTGGGACAAAACACAGATATACAGCAGATAGCGGCCAAAACCTTACAGACACTCTCTCATGTACC
CAGAGGACACTTGTAATCTGGACCAAGTACGAATACACAGAGTGGTCTTTTCAACACTCCTCCCCCTA
CTCCACCGGACCTCAACCAGGACTTCAGTGGATTTAGCTTCTAGTGGATGTTGCACTCAAACGGGCTG
CAGAGATGGAGCTTCAGGCAAACTTACAGCT
ACGCGTACGCGGCCGCTCGAG - GFP Tag - GTTTAAAC
```



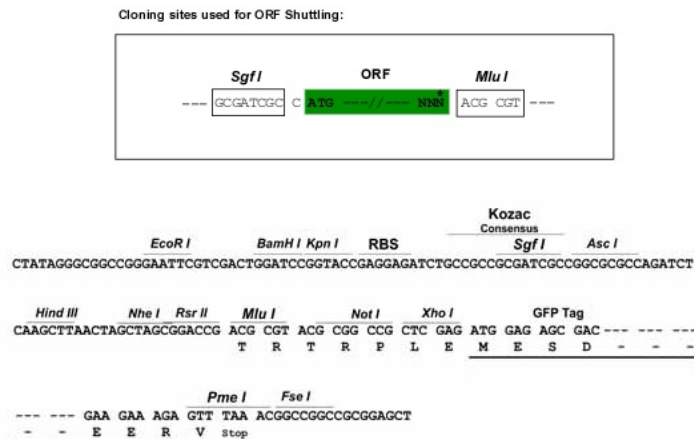
[View online »](#)

Protein Sequence: >Peptide sequence encoded by RG236943
 Blue=ORF Red=Cloning site Green=Tag(s)

XWF*RRAGCLPGWAPRIVRAPAGAALIPFHGPPPTPGIRSAPFPRLFWRPPDSPAALWPTFPQRRGPPWR
 PPLRSWGPPAPPLLHRRAAHSRVSPRSWGPRLGPAGRIGGNFRGPHRAHRVQLLGADSWKQ*KVLLQH
 LAVRLMRMTAWTFPWTFLHPLAQAREGEGATYPRSLCRFFGIGCMSTVMPILQSKKKRCCPSKHTCLR
 YRSVTGSSTPAAGSSLTC*ERMAKIQISSQFPAVGPFRFLKRALWSP*WASKTSCQL*RRPHFIPVQLGQTQP
 *GGHCLLSRHRDQFWLVHQ*SAIPL*LH*KMSLSLSASRSVWDKTQIYSR*RPKTSQTPLSCTQRTL VNLDQV
 RIHRVVFSTLLPLLHRTSTRTSVDFSF*WMLHSNGLQRWSFRQNLQ
 TRTRPLEMESDESGLPAMEIECRITGTLNGVEFELVGGEGTPEQGRMTNKMSTKGALTFSPYLLSHV
 MGYGFYHFGTYPSTYENPFLHAINNGGYTNRIEKYEDGGVLHVSFSYRYEAGRVIGDFKVMGTGFPED
 SVIFTDKIIRSNATVEHLHPMGDNDLDGSFTRTFSLRDGGYSSVVDSHMHFKSAIHPSILQNGGPMFA
 FRRVEEDHSNTELGIVEYQHAFKTPDADAGEERV

Restriction Sites: SgfI-MluI

Cloning Scheme:



ACCN: NM_001278686

ORF Size: 1211 bp

OTI Disclaimer: The molecular sequence of this clone aligns with the gene accession number as a point of reference only. However, individual transcript sequences of the same gene can differ through naturally occurring variations (e.g. polymorphisms), each with its own valid existence. This clone is substantially in agreement with the reference, but a complete review of all prevailing variants is recommended prior to use. [More info](#)

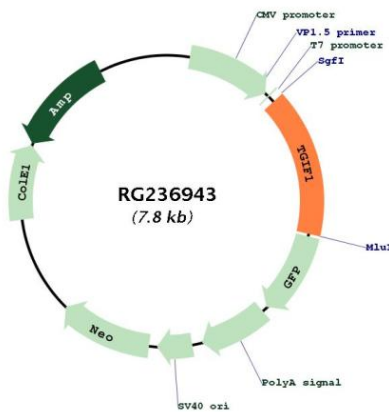
OTI Annotation: This clone was engineered to express the complete ORF with an expression tag. Expression varies depending on the nature of the gene.

Components: The ORF clone is ion-exchange column purified and shipped in a 2D barcoded Matrix tube containing 10ug of transfection-ready, dried plasmid DNA (reconstitute with 100 ul of water).

RefSeq: [NM_001278686.1](#), [NP_001265615.1](#)

RefSeq Size: 1553 bp

RefSeq ORF:	759 bp
Locus ID:	7050
UniProt ID:	Q15583
Cytogenetics:	18p11.31
Protein Families:	Druggable Genome, Stem cell - Pluripotency, Stem cell relevant signaling - TGFb/BMP signaling pathway, Transcription Factors
MW:	45.5 kDa
Gene Summary:	The protein encoded by this gene is a member of the three-amino acid loop extension (TALE) superclass of atypical homeodomains. TALE homeobox proteins are highly conserved transcription regulators. This particular homeodomain binds to a previously characterized retinoid X receptor responsive element from the cellular retinol-binding protein II promoter. In addition to its role in inhibiting 9-cis-retinoic acid-dependent RXR alpha transcription activation of the retinoic acid responsive element, the protein is an active transcriptional co-repressor of SMAD2 and may participate in the transmission of nuclear signals during development and in the adult. Mutations in this gene are associated with holoprosencephaly type 4, which is a structural anomaly of the brain. Alternative splicing has been observed at this locus and multiple splice variants encoding distinct isoforms are described. [provided by RefSeq, Jul 2013]

Product images:


Circular map for RG236943