

Product datasheet for **RG236940**

Methyltransferase like 6 (METTL6) (NM_001301791) Human Tagged ORF Clone

Product data:

Product Type: Expression Plasmids
Product Name: Methyltransferase like 6 (METTL6) (NM_001301791) Human Tagged ORF Clone
Tag: TurboGFP
Symbol: METTL6
Mammalian Cell Selection: Neomycin
Vector: pCMV6-AC-GFP (PS100010)
E. coli Selection: Ampicillin (100 ug/mL)
ORF Nucleotide Sequence: >RG236940 representing NM_001301791.
Blue=ORF Red=Cloning site Green=Tag(s)

```
GCTCGTTTAGTGAACCGTCAGAATTTTGTAAACGACTCACTATAGGGCGGCCGGGAATTCGTCGACTG
GATCCGGTACCGAGGAGATCTGCCGCCGCGATCGCC
ATGGCTCTTTGCAAAGGAAAGGGCTGCAGGCAAGGATTCTCACCTCTGAAGAAGAGGAGAACTGAAA
AGAGACCAAACCTTGGTGTCTGATTTTAAACAGCAGAAATTTGAACAAGAGGCTCAGAAAAATTGGGAT
CTTTTTACAAAAGAAATAGCACTAATTTCTCAAAGACAGACTGGACCACCAGAGAGTTTGAGGAG
CTAAGATCATGTAGAGAGTTTGAAGATCAAAGTTAACAATGCTTGAAGCTGGCTGTGGGGTTGGAAC
TGTTTATCCCACTTTTGAAGAAGATCCGAATATCTTTCCTATGCCTGTGATTTTTCTCCAAGAGCC
ATTGAATATGTTAAGCAAATCCTTTATATGATACAGAAAGATGCAAGGATTCCAGTGTGATCTGACT
AAAGATGATCTTCTGGATCATGTACCGCCAGAGTCTGTGGATGTTGTTATGTTGATATTTGTGCTGTCA
GCTGTTACCTGATAAGATGCACCTTGTCTTACAAAACATTTACAAGTCCATGGCTGCTCTTCAGAG
CTTCGCCAGCCCTGGGACAAGGATGATTTTGCAGTTACCTGGGATCCATGGAGTCTGCTATAAGGCTG
CTTGGAGAAGGCTTGGCAGATGTGCACGAGACCCTGAAACAAGCCCTCTACTGCACAATATTTACCCAG
CACCTGGAAGGCACAGACCTGGCCCTGCCCTTGAAGAGCTCACAAGCCTTCTCTGGTGTGAG
ACGCGTACGCGGCCGCTCGAG - GFP Tag - GTTTAAAC
```

Protein Sequence: >Peptide sequence encoded by RG236940
Blue=ORF Red=Cloning site Green=Tag(s)

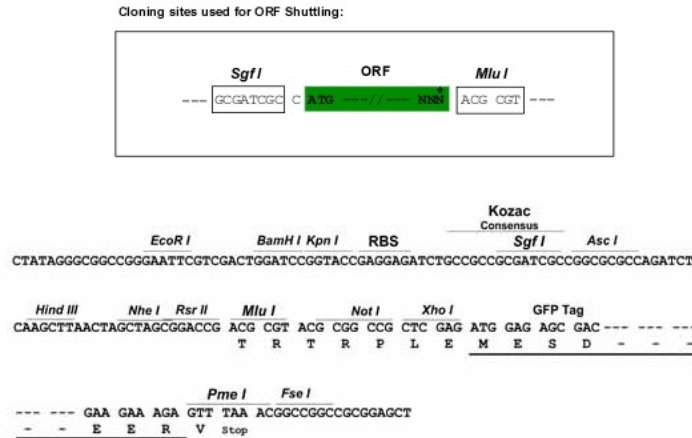
```
MASLQRKGLQARILTSEEEEKLRDQTLVSDFKQKLEQEAQKNWDLFYKRSTNFFKDRHWTTREFEE
LRSCREFEDQKL TMLEAGCGVGNCLFPLLEEDPNI FAYACDFSPRAIEYVKQNPLYDTERCKVFQCDLT
KDDLLDHVPPESVDVVMLIFVL SAVHPDKMHLVLQNIYKCHGCSSEL RQPWDKDDFAVWDPWSPAIRL
LGEGLRHVHETLKQAL YCTIFTQHLEGLDAPALEEL TSLWLCQ
TRTRPLEMESDESGLPAMEIECRITGTLNGVEFELVGGGEGTPEQGRMTNKMKSTKGALTFSPYLLSHV
MGYGFYHFGTYPSTYENPFLHAINNGYTNRIEKYEDGGVLHVSFSYRYEAGRVIGDFKVMGTGFPED
SVIFTDKIIRSNAIVEHLHPMGDNDLDGSFTRTFSLRDGGYSSVVD SHMHFKSAIHPSILQNGGPMFA
FRVEEDHSNTELGIVEYQHAFKTPDADAGEERV
```



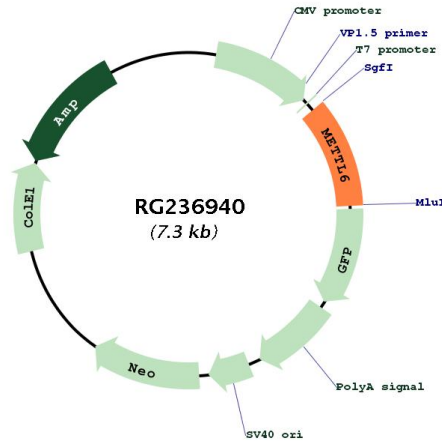
[View online >](#)

Restriction Sites: SgfI-MluI

Cloning Scheme:



Plasmid Map:



ACCN: NM_001301791

ORF Size: 753 bp

OTI Disclaimer: The molecular sequence of this clone aligns with the gene accession number as a point of reference only. However, individual transcript sequences of the same gene can differ through naturally occurring variations (e.g. polymorphisms), each with its own valid existence. This clone is substantially in agreement with the reference, but a complete review of all prevailing variants is recommended prior to use. [More info](#)

OTI Annotation: This clone was engineered to express the complete ORF with an expression tag. Expression varies depending on the nature of the gene.

Components:	The ORF clone is ion-exchange column purified and shipped in a 2D barcoded Matrix tube containing 10ug of transfection-ready, dried plasmid DNA (reconstitute with 100 ul of water).
RefSeq:	<u>NM_001301791.1, NP_001288720.1</u>
RefSeq Size:	1179 bp
RefSeq ORF:	756 bp
Locus ID:	131965
Cytogenetics:	3p25.1
Protein Families:	Druggable Genome
Protein Pathways:	Androgen and estrogen metabolism, Histidine metabolism, Selenoamino acid metabolism, Tyrosine metabolism
MW:	29.8 kDa
Gene Summary:	Probable methyltransferase.[UniProtKB/Swiss-Prot Function]