

Product datasheet for **RG236920**

E2F6 (NM_001278275) Human Tagged ORF Clone

Product data:

Product Type:	Expression Plasmids
Product Name:	E2F6 (NM_001278275) Human Tagged ORF Clone
Tag:	TurboGFP
Symbol:	E2F6
Synonyms:	E2F-6
Mammalian Cell Selection:	Neomycin
Vector:	pCMV6-AC-GFP (PS100010)
E. coli Selection:	Ampicillin (100 ug/mL)
ORF Nucleotide Sequence:	>RG236920 representing NM_001278275. Blue=ORF Red=Cloning site Green=Tag(s)

```
GCTCGTTTAGTGAACCGTCAGAATTTTGTAAACGACTCACTATAGGGCGGCCGGGAATTCGTCGACTG
GATCCGGTACCGAGGAGATCTGCCGCCGCGATCGCC
ATGAATCCTTCTCCATCAAAAATAAGGATTAATTTAGAAGATAATGTACAATATGTGCCATGAGAAAA
GCTCTAAAAGTGAAGAGACCTCGTTTTGATGTATCGCTGGTTATTTAACTCGAAAATTTATGGATCTT
GTCAGATCTGCTCCCGGGGTATTCTTGACTTAAACAAGGTTGCAACGAAACTGGGAGTCCGAAAGCGG
AGAGTGTATGACATACCAATGTCTTAGATGGAATCGACCTCGTTGAAAAGAAATCCAAGAACCATT
AGATGGATAGGATCTGATCTTAGCAATTTGGAGCAGTCCCAACAAAAGAAGCTACAGGAGGAACCT
TCTGACTTATCAGCAATGGAAGATGCTTTGGATGAGTTAATTAAGGATTGTGCTCAGCAGCTGTTTGAG
TTAACAGATGACAAAGAAAATGAAAGACTAGCATATGTGACCTATCAAGACATTCATAGCATTACAGGCC
TTCCATGAACAGATCGTCATTGCAGTTAAAGCTCCAGCAGAAACCAGATTGGATGTTCCAGCTCCCAGA
GAAGACTCTATCAGTGCACATAAGGAGCACCAACGGACCTATCGATGTCTATTTGTGTGAAGTGGAG
CAGGGTCAGACCAGTAACAAAAGGTCTGAAGGTGTCGGGACCTCTTCATCTGAGAGCACTCATCCAGAA
GGCCCTGAGGAAGAAGAAAATCCTCAGCAAAGTGAAGAATTGCTTGAAGTAAGCAAC
ACGCGTACGCGGCCGCTCGAG - GFP Tag - GTTTAAAC
```



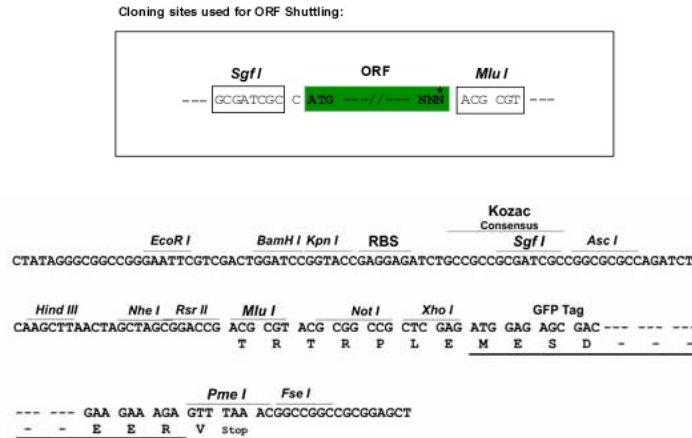
[View online »](#)

Protein Sequence: >Peptide sequence encoded by RG236920
 Blue=ORF Red=Cloning site Green=Tag(s)

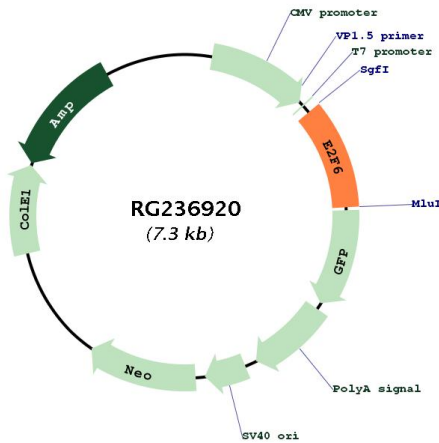
MNPSPSKIRINLEDNVQYVSMRKALKVKRPRFDVSLVYLTRKFMDLVRSAPGGILDLNKVATKLGVRKR
 RYVDITNVLDGIDLVEKKSKNHIRWIGSDL SNFGAVPQQKQLQEELSDL SAMEDALDEL IKDCAQLFE
 LTDDKENERLAYVTYQDIHSIQAFHEQIVIAVKAPAETRLDVPAPREDSITVHIRSTNGPIDVYLCEVE
 QGQTSNKRSEGVGTSSSESTHPEGPEEENPQQSEELLEVS
TRTRPLEMESDESGLPAMEIECRITGTLNGVEFELVGGGEGTPEQGRMTNKMSTKGALTFSPYLLSHV
 MGYGFYHFGTYPSGYENPFLHAINNGGYTNTRIEKYEDGGVLHVSFSYRYEAGRVIGDFKVMGTGFPED
 SVIFTDKIIRSNAIVEHLHPMGDNDLDGSFTRTFSLRDGGYSSVVD SHMHFKSAIHPSILQNGGPMFA
 FRRVEEDHSNTELGIVEYQHAFKTPDADAGEERV

Restriction Sites: SgfI-MluI

Cloning Scheme:



Plasmid Map:



ACCN: NM_001278275

ORF Size:	747 bp
OTI Disclaimer:	The molecular sequence of this clone aligns with the gene accession number as a point of reference only. However, individual transcript sequences of the same gene can differ through naturally occurring variations (e.g. polymorphisms), each with its own valid existence. This clone is substantially in agreement with the reference, but a complete review of all prevailing variants is recommended prior to use. More info
OTI Annotation:	This clone was engineered to express the complete ORF with an expression tag. Expression varies depending on the nature of the gene.
Components:	The ORF clone is ion-exchange column purified and shipped in a 2D barcoded Matrix tube containing 10ug of transfection-ready, dried plasmid DNA (reconstitute with 100 ul of water).
RefSeq:	NM_001278275.1 , NP_001265204.1
RefSeq Size:	3317 bp
RefSeq ORF:	750 bp
Locus ID:	1876
UniProt ID:	O75461
Cytogenetics:	2p25.1
Protein Families:	Transcription Factors
MW:	28.6 kDa
Gene Summary:	This gene encodes a member of a family of transcription factors that play a crucial role in the control of the cell cycle. The protein encoded by this gene lacks the transactivation and tumor suppressor protein association domains found in other family members, and contains a modular suppression domain that functions in the inhibition of transcription. It interacts in a complex with chromatin modifying factors. There are pseudogenes for this gene on chromosomes 22 and X. Alternative splicing results in multiple transcript variants. [provided by RefSeq, May 2013]