

Product datasheet for **RG236907**

TPD52 (NM_001287140) Human Tagged ORF Clone

Product data:

Product Type:	Expression Plasmids
Product Name:	TPD52 (NM_001287140) Human Tagged ORF Clone
Tag:	TurboGFP
Symbol:	TPD52
Synonyms:	D52; hD52; N8L; PC-1; PrLZ
Mammalian Cell Selection:	Neomycin
Vector:	pCMV6-AC-GFP (PS100010)
E. coli Selection:	Ampicillin (100 ug/mL)
ORF Nucleotide Sequence:	>RG236907 representing NM_001287140. Blue=ORF Red=Cloning site Green=Tag(s)

```
GCTCGTTTAGTGAACCGTCAGAATTTGTAAACGACTCACTATAGGGCGCCGGGAATTCGTCGACTG
GATCCGGTACCGAGGAGATCTGCCGCCGCGATCGCC
ATGGATTGTAGAGAGATGGACTTATATGAGGACTACCACTCCCGTTTGATTTTGCAGGAGTGAAC
AAAAGCTATCTCTACTTGTCTCTAGTGAAAATTCATCTCCACCCGGATCACCTACTCTTCAGAAATTT
GGTCTGCTGAGAACAGACCCAGTCCCTGAGGAAGGAGAAGATGTTGCTGCCACGATCAGTGCCACAGAG
ACCCTCTCGAAGAGGAGCAGGAAGAGCTAAGAAGAGAACTTGCAAAGGTAGAAGAAGAAATCCAGACT
CTGTCTCAAGTGTAGCAGCAAAAGAGAAGCATCTAGCAGAGATCAAGCGGAACTTGAATCAATTCT
CTACAGGAACTAAACAGAACATTGCCAAAGGGTGGCAAGACGTGACAGCAACATCTGCTTACAAGAAG
ACATCTGAAACCTTATCCAGGCTGGACAGAAGGCCTCAGCTGCTTTTTGCTCTGTTGGCTCAGTCATC
ACCAAAAAGCTGGAAGATGTAATAATGCAAGCCTTTTACATTCCTTTAGTATACGTTCCATTCAGCAT
TCAATTAGCATGCCTGCTATGAGAACTCCCAACTTTTAAATCATTTGAAGAAAAGTTCGAAAACCTTA
AAGTCTAAAGTAGGGGAACCAAGCCTGCTGGTGGTGATTTTGGAGAAGTCTTGAATTCGGCTGCAAT
GCTAGTGCCACCACCACGGAGCCTCTCCAGAAAAGACACAGGAGAGCCTG
ACGCGTACGCGGCCGCTCGAG - GFP Tag - GTTAAAC
```



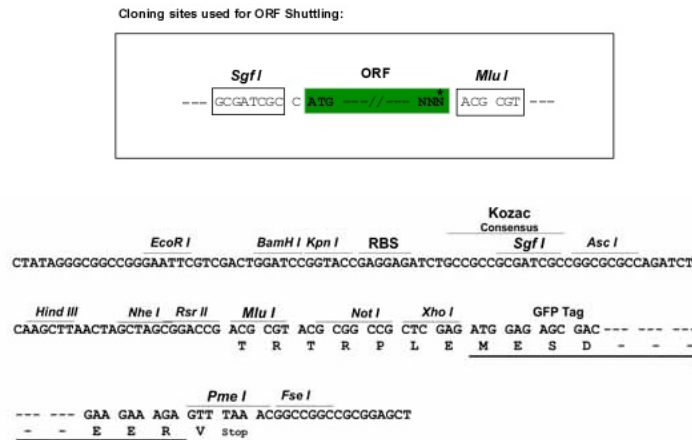
[View online »](#)

Protein Sequence: >Peptide sequence encoded by RG236907
 Blue=ORF Red=Cloning site Green=Tag(s)

MDCREMDLYEDYQSPFFDAGVNSYLYLSPSGNSSPPGSPTLQKFGLLRTPVPEEGEDVAATISATE
 TLSEEEQEELRRELAKVEEIIQTLSQLAAKEKHLAEIKRKLGINSLQELKQNIKQWQDVTATSAYKK
 TSETLSQAGQKASAAFSSVGSVITKKLEDVKLQAFSHSFSIRSIQHSISMPAMRNSPTFKSFEEKVENL
 KSKVGGTKPAGGDFGEVLNSAANASATTEPLPEKTQESL
 TRTRPLEMESDESGLPAMEIECRITGTLNGVEFELVGGGEGTPEQGRMTNKMSTKGALTFSPYLLSHV
 MGYGFYHFGTYPSGYENPFLHAINNGGYTNTRIEKYEDGGVLHVSFSYRYEAGRVIGDFKVMGTGFPED
 SVIFTDKIIRSNAIVEHLHPMGDNDLDGSFTRTFSLRDGGYSSVVDSHMHFKSAIHPSILQNGGPMFA
 FRRVEEDHSNTELGIVEYQHAFKTPDADAGEERV

Restriction Sites: SgfI-MluI

Cloning Scheme:



ACCN: NM_001287140

ORF Size: 741 bp

OTI Disclaimer: The molecular sequence of this clone aligns with the gene accession number as a point of reference only. However, individual transcript sequences of the same gene can differ through naturally occurring variations (e.g. polymorphisms), each with its own valid existence. This clone is substantially in agreement with the reference, but a complete review of all prevailing variants is recommended prior to use. [More info](#)

OTI Annotation: This clone was engineered to express the complete ORF with an expression tag. Expression varies depending on the nature of the gene.

Components: The ORF clone is ion-exchange column purified and shipped in a 2D barcoded Matrix tube containing 10ug of transfection-ready, dried plasmid DNA (reconstitute with 100 ul of water).

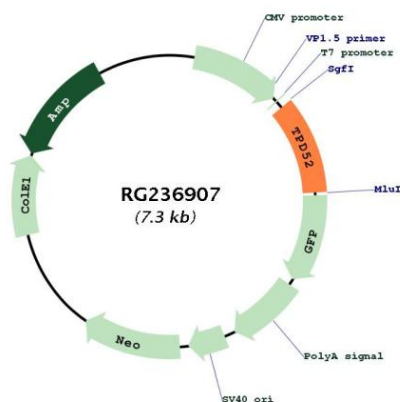
RefSeq: [NM_001287140.2](#)

RefSeq Size: 4382 bp

RefSeq ORF: 744 bp

Locus ID: 7163
 UniProt ID: [P55327](#)
 Cytogenetics: 8q21.13
 MW: 27.4 kDa

Product images:



Circular map for RG236907