

Product datasheet for **RG236902**

SLC25A45 (NM_001278251) Human Tagged ORF Clone

Product data:

Product Type: Expression Plasmids
Product Name: SLC25A45 (NM_001278251) Human Tagged ORF Clone
Tag: TurboGFP
Symbol: SLC25A45
Mammalian Cell Selection: Neomycin
Vector: pCMV6-AC-GFP (PS100010)
E. coli Selection: Ampicillin (100 ug/mL)
ORF Nucleotide Sequence: >RG236902 representing NM_001278251.
Blue=ORF Red=Cloning site Green=Tag(s)

```
GCTCGTTTAGTGAACCGTCAGAATTTTGTAAACGACTCACTATAGGGCGGCCGGAATTCGTCGACTG
GATCCGGTACCGAGGAGATCTGCCGCCGCGATCGCC
ATGGTCAAGATTTACCGCATGAGTCCCTCCTGGGCTTCTCAAGGGAATGAGCTTCCCCATTGCCAGC
ATAGCTGTGGTCAACTCTGTCTGTTTGGGGTCTATAGCAACACCCTGCTGGTGTACAGGCCACCTCC
CACCAGGAGCGGGCGGCCAGCCGCCAGCTACATGCACATCTTCTAGCGGGCTGCACCGGGGGTTC
CTGCAGGCCTACTGTCTGGCTCCTTTGACCTCATCAAAGTCCGGCTACAAAACCAGACAGAGCCAAGG
GCCCAGCCAGGGAGCCCCACCCGGTACCAGGGGCCGCTGACTGTGCAGCCTCCATCTTCCGGGAG
GAGGGGCCCGGGGGCTGTTCCGAGGAGCTGGGCCCTGACGCTGAGGGACACCCCATCGTGGGATC
TACTTCATCACCTATGAAGGGCTGTGCGCCAGTACACACCAGAAGGCCAGAATCCAGCTCAGCCACG
GTGCTGGTGGCAGGGGGCTTTCAGGCATTGCTTCTGGGTGGCAGCCACGCCCTTAGACGTGATCAAG
TCCCGGATGCAGATGGATGGACTGAGACGAGAGTGTACCAGGGGATGCTGGACTGCATGGTGGAGCAGC
ATCCGGCAGGAAGGACTGGGAGTCTTCTCCGGGGGTACCATCAACAGTGCCCGCCTTCCCGTC
AATGCTGCACCTTCTCAGCTACGAATATCTCCTCCGCTGGTGGGGA
ACGCGTACGCGGCCGCTCGAG - GFP Tag - GTTTAAAC
```

Protein Sequence: >Peptide sequence encoded by RG236902
Blue=ORF Red=Cloning site Green=Tag(s)

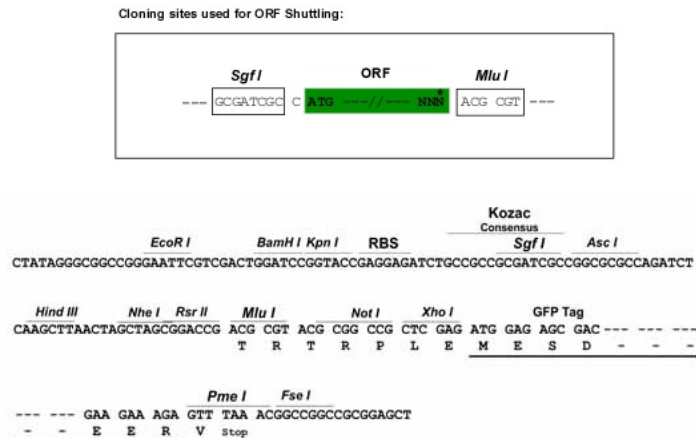
```
MVKIYRHESLLGFFKMSFPIASIAVNSVLFGVYSNTLLVLTATSHQERRAQQPPSYMHIFLAGCTGGF
LQAYCLAPFDLIKVRLQNQTEPRAQPGSPPPRYQGPVHCAASIFREEGPRGLFRGAWALTLRDTPTVGI
YFITYEGLCRQYTPGQNPSSATVLVAGGFAGIASWVAATPLDVIKSRMQMDGLRRRVYQGLMDCMVSS
IRQEGLGVFFRGVTINSARAFPVNAVTFLSYEYLLRWGG
TRTRPLEMESDESGLPAMEIECRITGTLNGVEFELVGGGEGTPEQGRMTNKMSTKGALTFSPYLLSHV
MGYGFYHFGTYPSGYENPFLHAINNGGYNTRIEKYEDGGVLHVSFSYRYEAGRVIGDFKVMGTGFPEL
SVIFTDKIIIRSNAVTEHLHPMGDNDLDGSFTRTFSLRDGGYSSVVDSHMHFKSAIHPSILQNGGPMFA
FRRVEEDHSNTELGIVEYQHAFKTPDADAGEERY
```



[View online >](#)

Restriction Sites: SgfI-MluI

Cloning Scheme:



ACCN: NM_001278251

ORF Size: 738 bp

OTI Disclaimer: The molecular sequence of this clone aligns with the gene accession number as a point of reference only. However, individual transcript sequences of the same gene can differ through naturally occurring variations (e.g. polymorphisms), each with its own valid existence. This clone is substantially in agreement with the reference, but a complete review of all prevailing variants is recommended prior to use. [More info](#)

OTI Annotation: This clone was engineered to express the complete ORF with an expression tag. Expression varies depending on the nature of the gene.

Components: The ORF clone is ion-exchange column purified and shipped in a 2D barcoded Matrix tube containing 10ug of transfection-ready, dried plasmid DNA (reconstitute with 100 ul of water).

RefSeq: [NM_001278251.2](#), [NP_001265180.2](#)

RefSeq Size: 3109 bp

RefSeq ORF: 741 bp

Locus ID: 283130

UniProt ID: [Q8N413](#)

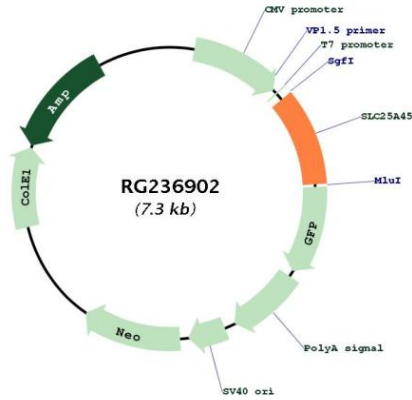
Cytogenetics: 11q13.1

Protein Families: Druggable Genome, Transmembrane

MW: 27.7 kDa

Gene Summary: SLC25A45 belongs to the SLC25 family of mitochondrial carrier proteins (Haitina et al., 2006 [PubMed 16949250]).[supplied by OMIM, Mar 2008]

Product images:



Circular map for RG236902