

Product datasheet for **RG236898**

CCDC90B (NM_001286116) Human Tagged ORF Clone

Product data:

Product Type:	Expression Plasmids
Product Name:	CCDC90B (NM_001286116) Human Tagged ORF Clone
Tag:	TurboGFP
Symbol:	CCDC90B
Synonyms:	MDS011; MDS025
Mammalian Cell Selection:	Neomycin
Vector:	pCMV6-AC-GFP (PS100010)
E. coli Selection:	Ampicillin (100 ug/mL)
ORF Nucleotide Sequence:	>RG236898 representing NM_001286116. Blue=ORF Red=Cloning site Green=Tag(s)

```
GCTCGTTTAGTGAACCGTCAGAATTTGTAAACGACTCACTATAGGGCGCCGGGAATTCGTGACTG
GATCCGGTACCGAGGAGATCTGCCGCCGCGATCGCC
ATGCTCGGAAGTGTGGTCTGTCTGTGAAGAGACCCAGTTTCGTGGGACCACGGTGGCGCTGCCTG
GGAGAGTCTTCACTACCACAACCAAGGAGGGATATGATAGGCGCCAGTGGATAAAGTCTTTAGAA
CAAAGGAAATTAAGTCTTGTATCAGCGTAACTGCTTTATCAAATGTCAGCCTGGATACTATCTATAAGAG
CAAGCAGAAACAATTGTATCAGCGTAACTGCTTTATCAAATGTCAGCCTGGATACTATCTATAAGAG
ATGGTCACTCAAGCTCAACAGGAAATAACAGTACAACAGCTAATGGCTCATTTGGATGCTATCAGGAAA
GACATGGTCATCCTAGAGAAAAGTGAATTTGCAAATCTGAGAGCAGAGAATGAGAAAATGAAAATTGAA
TTAGACCAAGTTAAGCAACAATAATGCATGAAACAGTGAATCAGAGCAGATAATAAAGTGGATATC
AACTTAGAAAAGGAGCAGAGTAACAGATATGTTTACAGATCAAGAAAAGCAACTTATGAAAACAATAACA
GAATTTACAAAAAAGGATACTCAAACAAAAGTATTATTTAGAGACAGTAATAAAGTGGATGAA
ATTGCTTCCTTAAAAAAGTACTGATGGAATCTAACAACTTGAGACAATTCGTTATCTTGCAGCTTCGGTG
TTTACTTGCTGGCAATAGCATTGGGATTTATAGATTCTGGAAG
ACGCGTACGCGGCCGCTCGAG - GFP Tag - GTTAAAC
```



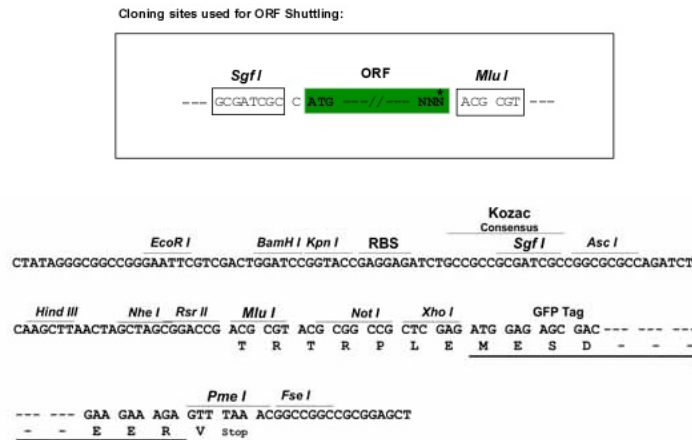
[View online »](#)

Protein Sequence: >Peptide sequence encoded by RG236898
 Blue=ORF Red=Cloning site Green=Tag(s)

MLANCGSVCEETQFRGTTVPALGEFFTTTTKEGYDRRPVDITPLEQRKLTFDTHALVQDLETHGFDKT
 QAETIVSALTALSNVSLDTIYKEMVTAQQEITVQQLMAHLDAIRKDMVILEKSEFANLRAENEMKIE
 LDQVKQLMHETSRIRADNKLDINLERSRVTFDMFTDQEKQLMETTTEFTKKDTQTKSISETSINKIDAE
 IASLKTLMESNKLETIRYLAASVFTCLAIALGFYRFWK
 TRTRPLEMESDESGLPAMEIECRITGTLNGVEFELVGGEGTPEQGRMTNKMSTKGALTFSPYLLSHV
 MGYGFYHFGTYPSGYENPFLHAINNGGYTNTRIEKYEDGGVLHVSFSYRYEAGRVIGDFKVMGTGFPEP
 SVIFTDKIIIRSNAVHHLHPMGDNDLDGSFTRTFSLRDGGYSSVVDSHMHFKSAIHPSILQNGGPMFA
 FRRVEEDHSNTELGIVEYQHAFKTPDADAGEERV

Restriction Sites: SgfI-MluI

Cloning Scheme:



ACCN: NM_001286116

ORF Size: 735 bp

OTI Disclaimer: The molecular sequence of this clone aligns with the gene accession number as a point of reference only. However, individual transcript sequences of the same gene can differ through naturally occurring variations (e.g. polymorphisms), each with its own valid existence. This clone is substantially in agreement with the reference, but a complete review of all prevailing variants is recommended prior to use. [More info](#)

OTI Annotation: This clone was engineered to express the complete ORF with an expression tag. Expression varies depending on the nature of the gene.

Components: The ORF clone is ion-exchange column purified and shipped in a 2D barcoded Matrix tube containing 10ug of transfection-ready, dried plasmid DNA (reconstitute with 100 ul of water).

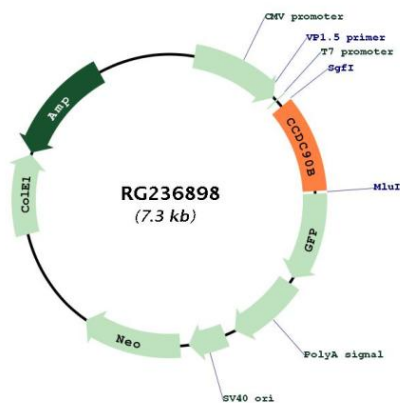
RefSeq: [NM_001286116.1](#), [NP_001273045.1](#)

RefSeq Size: 3791 bp

RefSeq ORF: 738 bp

Locus ID: 60492
UniProt ID: [Q9GZT6](#)
Cytogenetics: 11q14.1
Protein Families: Transmembrane
MW: 28.4 kDa

Product images:



Circular map for RG236898