

Product datasheet for **RG236897**

TMEM116 (NM_001294314) Human Tagged ORF Clone

Product data:

Product Type: Expression Plasmids
Product Name: TMEM116 (NM_001294314) Human Tagged ORF Clone
Tag: TurboGFP
Symbol: TMEM116
Mammalian Cell Selection: Neomycin
Vector: pCMV6-AC-GFP (PS100010)
E. coli Selection: Ampicillin (100 ug/mL)
ORF Nucleotide Sequence: >RG236897 representing NM_001294314.
 Blue=ORF Red=Cloning site Green=Tag(s)

```
GCTCGTTTAGTGAACCGTCAGAATTTTGTAAACGACTCACTATAGGGCGCCGGGAATTCGTCGACTG
GATCCGGTACCGAGGAGATCTGCCGCCGCGATCGCC
ATGAAACACCCAGAGTGGACAGAGCACATCTCCACTGGTGATAGATTACTTGTGCGAGTTTGTCAA
ATGGCCTTTGTTTTCTCAAGCCTGATACCTCTGCTATTGATGACACCTGTATTCTGTCTGGGAAACT
AGTGAATGTTTCCAAAATTCAGTCAGAGCCACAAGTGTATCTTGATGCACTCACCACCATCAGCCATG
GCTGAACCTCCACCTTCTGCCAACACATCTGTCTGTAGCACACTTTATTTTTATGGTATCGCCATTTTC
CTGGGCAGCTTTGTAAGTCAACTGGCTTTCTGGGGAGTGAACAGTGGGCGAGTATTACATTGTGGACCAACGG
AAGTTTGTGAAGTCAACTGGCTTTCTGGGGAGTGAACAGTGGGCGAGTATTACATTGTGGACCAACGG
GTGCGCTTCTACCCAGTGGCCTTCTTTTCTGCTGCTGGGGCCAGCTGCTATTCTAATGATCATAAAGCTG
ACTAAGCCACAGGACACCAAGCTTCACATGGCCCTTTATGTTCTCCAGGCTCTAACGGCAACATCTCAG
GGTCTACTCAACTGTGGAGTATATGGCTGGACGCAGCACAAAATCCACCAACTAAAGCAGGAGGCTCGG
CGTGATGCAGATACCCAGACACCATTATTATGCTCACAGAAGAGATTCTATAGCAGGGGCTTAAATTCA
CTGGAATCCACCCTGACTTTTCTGCCAGTACTTCTACCATTTT
ACGCGTACGCGGCCGCTCGAG - GFP Tag - GTTTAAAC
```

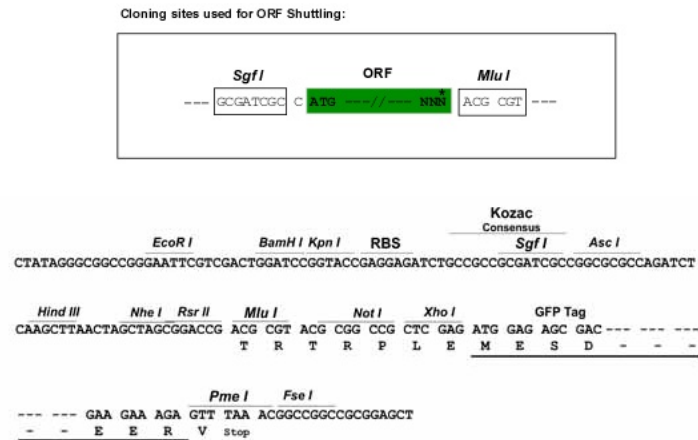
Protein Sequence: >Peptide sequence encoded by RG236897
 Blue=ORF Red=Cloning site Green=Tag(s)

```
MKHTQSGQSTPLVIDYTCRVCQMAFVFSLLIPLLLMTPVFLGNTSECFQNFSSQSHKCILMHSPPSAM
AELPPSANTSVCSTLYFYGIAIFLGSFVLSLLTIMVLLIRAQTL YKKFVKSTGFLGSEQWAVIHIVDQR
VRFYFVAFCCWGPVILMI IKLTKPQDTKLHMLYVLQALTATSQGLLNGVYGTQHKFHQLKQEAR
RDADTQTPLLCSQKRFYSRGLNSLESTLTFPASTIF
TRTRPLEMESDESGLPAMEIECRITGTLNGVEFELVGGEGTPEQGRMTNKMSTKGALTFSPYLLSHV
MGYGFYHFGTYPSTYENPFLHAINNGGYTNRIEKYEDGGVLHVSFSYRYEAGRVIGDFKVMGTGFPEP
SVIFTDKIIIRSNAVVEHLHPMGDNDLDGSFTRTFSLRDGGYSSVVDSDMHFKSAIHPISILQNGGPMFA
FRRVEEDHSNTELGIVEYQHAFKTPDADAGEERY
```



Restriction Sites: SgfI-MluI

Cloning Scheme:



ACCN: NM_001294314

ORF Size: 735 bp

OTI Disclaimer: The molecular sequence of this clone aligns with the gene accession number as a point of reference only. However, individual transcript sequences of the same gene can differ through naturally occurring variations (e.g. polymorphisms), each with its own valid existence. This clone is substantially in agreement with the reference, but a complete review of all prevailing variants is recommended prior to use. [More info](#)

OTI Annotation: This clone was engineered to express the complete ORF with an expression tag. Expression varies depending on the nature of the gene.

Components: The ORF clone is ion-exchange column purified and shipped in a 2D barcoded Matrix tube containing 10ug of transfection-ready, dried plasmid DNA (reconstitute with 100 ul of water).

RefSeq: [NM_001294314.1](#), [NP_001281243.1](#)

RefSeq Size: 1824 bp

RefSeq ORF: 738 bp

Locus ID: 89894

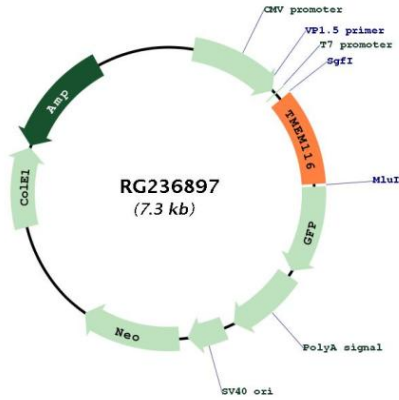
UniProt ID: [Q8NCL8](#)

Cytogenetics: 12q24.12-q24.13

Protein Families: Druggable Genome, Transmembrane

MW: 27.9 kDa

Product images:



Circular map for RG236897