

Product datasheet for **RG236891**

PPCS (NM_001287511) Human Tagged ORF Clone

Product data:

| | |
|---------------------------|--|
| Product Type: | Expression Plasmids |
| Product Name: | PPCS (NM_001287511) Human Tagged ORF Clone |
| Tag: | TurboGFP |
| Symbol: | PPCS |
| Synonyms: | CMD2C |
| Mammalian Cell Selection: | Neomycin |
| Vector: | pCMV6-AC-GFP (PS100010) |
| E. coli Selection: | Ampicillin (100 ug/mL) |
| ORF Nucleotide Sequence: | >RG236891 representing NM_001287511. Blue=ORF Red=Cloning site Green=Tag(s) |

```
GCTCGTTTAGTGAACCGTCAGAATTTTGTAAACGACTCACTATAGGGCGGCCGGGAATTCGTCGACTG
GATCCGGTACCGAGGAGATCTGCCGCCGCGATCGCC
ATGGCGGAAATGGATCCGGTAGCCGAGTCCCCAGCCTCCCGGTGCTGCGCGCTGGGCTGAGGTTATG
GCTCGTTCGCGGCCAGGCTGGGCGCGCAGGGCCGGGGTGGTGTGGTTACGTCAGGCGGCACCAAG
GTCCCACTGGAAGCGCGGCCGGTGCCTTCTGGACAACCTCAGCAGCGGGCGGCGGCTGCAACCTCG
GCCGAGGCTTCTAGCCGCCGGTACGGGCTCCTGTTCTGTATCGCGCTCGCTGCCTTCCCCTAT
GCCACCGCTTCCACCCAGACTTGGCTGTCCGCTCTGCGGCCCTCGGGCCAGCCCTTTCGGGCTTG
CTGAGCCTGGAGGCCGAGGAGAATGCACCTCCGGTTTTGCTGAGGCTCTGAGGACTACCAGGAGGCT
GCGGCTGCAGGCACCTTCTGGCAGTAGAGTTCACCACTTTGGCGGACTATTTGCATCTGTTGCAGGCT
GCGGCCAGGCACTCAATCCGCTAGGCCCTTCTGCGATGTTTTACCTGGCTGCGGCTGTGTCAGATTTT
TATGTTCTGTCTCTGAAATGCCTGAACACAAGATCCAGTCATCTGGGGGCCACTGCAGGAAAAGTT
CAGTTAGAAGACATACTTACCATCTTGAAAAAGAAGAAATCAATCCCCTTGCTACTACAGAAGAACA
CTCTGTTTGGTGCTTATCCAGCCAGCACAGTGAAGACAGGC
ACGCGTACGCGGCCGCTCGAG - GFP Tag - GTTTAAAC
```



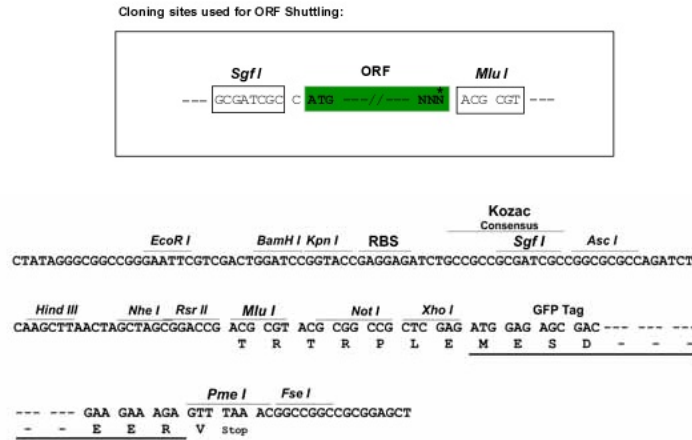
[View online »](#)

Protein Sequence: >Peptide sequence encoded by RG236891
 Blue=ORF Red=Cloning site Green=Tag(s)

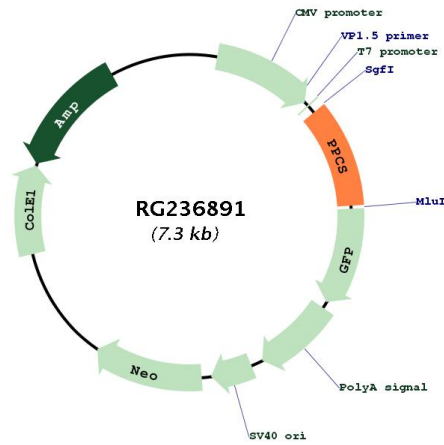
MAEMDPVAEFPQPPGAARWAEVMARFAARLGAQGRVVLVTSGGTVKPLEARPVRFLLDNFSSGRRGATS
 AEAFLAAGYGVFLYRARSAPFYAHRFPQTWLSALRPSGALSGLLSLEAEENALPGFAELRSYQEA
 AAAGTFLAVEFTLADYLHLLQAAAQALNPLGPSAMFYLAAAVSDFYVPVSEMPEHKIQSSGGPLQGV
 QLEDILHHLKEEINPLATTEEQCLVLIPASTVKTG
 TRTRPLEMESDESGLPAMEIECRITGTLNGVEFELVGGEGTPEQGRMTNKMSTKGALTFSPYLLSHV
 MGYGFYHFGTYPSTYENPFLHAINNGGYTNTRIEKYEDGGVLHVSFSYRYEAGRVIGDFKVMGTGFPED
 SVIFTDKIIRSNTAVEHLHPMGDNDLDGSFTRTFSLRDGGYSSVVDSHMHFKSAIHPSILQNGGPMFA
 FRRVEEDHSNTELGIVEYQHAFKTPDADAGEERV

Restriction Sites: SgfI-MluI

Cloning Scheme:



Plasmid Map:



ACCN: NM_001287511

| | |
|--------------------------|--|
| ORF Size: | 732 bp |
| OTI Disclaimer: | The molecular sequence of this clone aligns with the gene accession number as a point of reference only. However, individual transcript sequences of the same gene can differ through naturally occurring variations (e.g. polymorphisms), each with its own valid existence. This clone is substantially in agreement with the reference, but a complete review of all prevailing variants is recommended prior to use. More info |
| OTI Annotation: | This clone was engineered to express the complete ORF with an expression tag. Expression varies depending on the nature of the gene. |
| Components: | The ORF clone is ion-exchange column purified and shipped in a 2D barcoded Matrix tube containing 10ug of transfection-ready, dried plasmid DNA (reconstitute with 100 ul of water). |
| RefSeq: | NM_001287511.1 , NP_001274440.1 |
| RefSeq Size: | 958 bp |
| RefSeq ORF: | 735 bp |
| Locus ID: | 79717 |
| UniProt ID: | Q9HAB8 |
| Cytogenetics: | 1p34.2 |
| Protein Pathways: | Metabolic pathways, Pantothenate and CoA biosynthesis |
| MW: | 26.6 kDa |
| Gene Summary: | Biosynthesis of coenzyme A (CoA) from pantothenic acid (vitamin B5) is an essential universal pathway in prokaryotes and eukaryotes. PPCS (EC 6.3.2.5), one of the last enzymes in this pathway, converts phosphopantothenate to phosphopantothenoylcysteine (Daugherty et al., 2002 [PubMed 11923312]).[supplied by OMIM, Mar 2008] |