

## Product datasheet for **RG236889**

### FAM3A (NM\_001282311) Human Tagged ORF Clone

#### Product data:

|                           |  |
|---------------------------|--|
| Product Type:             | Expression Plasmids  |
| Product Name:             | FAM3A (NM_001282311) Human Tagged ORF Clone                                    |
| Tag:                      | TurboGFP   |
| Symbol:                   | FAM3A  |
| Synonyms:                 | 2.19; DLD; DXS560S; XAP-7  |
| Mammalian Cell Selection: | Neomycin   |
| Vector:                   | pCMV6-AC-GFP (PS100010)  |
| E. coli Selection:        | Ampicillin (100 ug/mL)   |
| ORF Nucleotide Sequence:  | >RG236889 representing NM_001282311.<br>Blue=ORF Red=Cloning site Green=Tag(s) |

```
GCTCGTTTAGTGAACCGTCAGAATTTGTAAACGACTCACTATAGGGCGCCGGGAATTCGTCGACTG
GATCCGGTACCGAGGAGATCTGCCGCCGCGATCGCC
ATGGATCGTGGTCAAGTCCCTCTGGGTGGCCTGGCAGTGGCTTTCCTCGCATCCAGCAACTCTTCAC
CAGCTGGAGTGCAGTGGTCAATCTCGTTCACTGCAACCTCTACCTCCTGGTTCAAGCGATTCTAGT
GCCCCAGCCTCCCGAGTAGCTGAGACTACAGGTCCAGAGAGCTCGGTGACTGCAGCGCCACGGGCCAGG
AAGTACAAGTGTGGCCTGCCCGCCGTCCTGAGGAGCACCTGGCCTTCGCGTGGTCAAGGACAACGTG
GCCAACGTCATTGGGCCAAGATCTGCCTCGAGGACAAGATGCTGATGAGCAGCGTCAAGGACAACGTG
GGCCGCGGGTGAACATCGCCCTGGTGAACGGGTGAGCGGCGAGCTCATCGAGGCCGGCCCTTTGAC
ATGTGGGCGGAGATGTCAACGACCTGTTGAAGTTTATTCGGCCACTGCACGAAGGCACCCCTGGTGTTC
GTGGCATCCTACGACGACCCAGCCACCAAGATGAATGAAGAGACCAGAAAGCTCTTCAGTGAAGTGGC
AGCAGGAACGCCAAGGAGCTGGCCTTCGGGACAGCTGGGTGTTTGTGGGGCCAAGGGTGTGCAGAAC
AAGAGCCCTTTGAGCAGCACGTGAAGAACAGTAAGCACAGCAACAAGTACGAAGGCTGGCCCGAGGCG
CTGGAGATGGAAGGCTGTATCCCGCGGAGAAGCACGGCCAGC
ACGCGTACGCGGCCGCTCGAG - GFP Tag - GTTAAAC
```



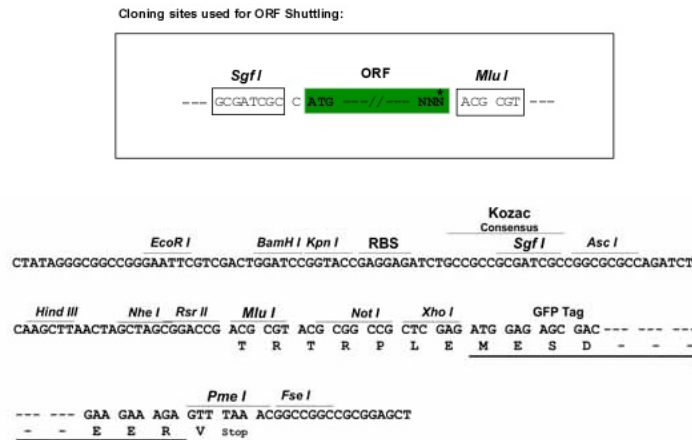
[View online »](#)

**Protein Sequence:** >Peptide sequence encoded by RG236889  
 Blue=ORF Red=Cloning site Green=Tag(s)

MDRGQHPPGWAWQWLSSHATLHQLCSGAI SVHCNLYLLGSSDSSAPASRVAETTGPRESSVTAAPRAR  
 KYKCGLPQPCPEEHLAFRVVSGAANVIGPKICLEDKMLMSSVKDNVGRGLNIALVNGVSGELIARAFD  
 MWAGDVNDLLKFI RPLHEGTLVFVASYDDPATKMNEETRKLSELGSRNAKELAFRDSWVFGAKGVQN  
 KSPFEQHVKNKSNKHSNKYEGWPEALEMEGCIPRRSTAS  
 TRTRPLEMESDESGLPAMEIECRITGTLNGVEFELVGGEGTPEQGRMTNKMSTKGALTFSPYLLSHV  
 MGYGFYHFGTYPSGYENPFLHAINNGGYTNTRIEKYEDGGVLHVSFSYRYEAGRVIGDFKVMGTGFPE  
 SVIFTDKIIRS NATVEHLHPMGDNDLDGSFTRTFSLRDGGYSSVVD SHMHFKSAIHPSILQNGGPMFA  
 FRRVEEDHSNTELGIVEYQHAFKTPDADAGEERV

**Restriction Sites:** SgfI-MluI

**Cloning Scheme:**



**ACCN:** NM\_001282311

**ORF Size:** 732 bp

**OTI Disclaimer:** The molecular sequence of this clone aligns with the gene accession number as a point of reference only. However, individual transcript sequences of the same gene can differ through naturally occurring variations (e.g. polymorphisms), each with its own valid existence. This clone is substantially in agreement with the reference, but a complete review of all prevailing variants is recommended prior to use. [More info](#)

**OTI Annotation:** This clone was engineered to express the complete ORF with an expression tag. Expression varies depending on the nature of the gene.

**Components:** The ORF clone is ion-exchange column purified and shipped in a 2D barcoded Matrix tube containing 10ug of transfection-ready, dried plasmid DNA (reconstitute with 100 ul of water).

**RefSeq:** [NM\\_001282311.2](#)

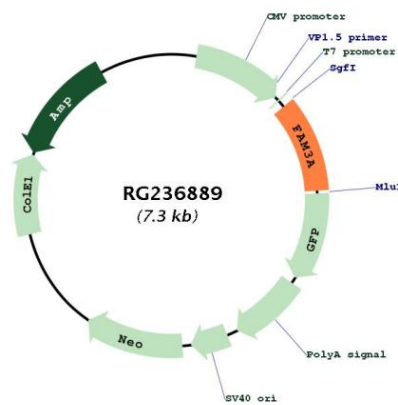
**RefSeq Size:** 1919 bp

**RefSeq ORF:** 735 bp

**Locus ID:** 60343  
**UniProt ID:** [P98173](#)  
**Cytogenetics:** Xq28  
**Protein Families:** Secreted Protein, Transmembrane  
**MW:** 27.2 kDa

**Gene Summary:** This gene encodes a cytokine-like protein. The expression of this gene may be regulated by peroxisome proliferator-activated receptor gamma, and the encoded protein may be involved in the regulation of glucose and lipid metabolism. Alternative splicing results in multiple transcript variants. [provided by RefSeq, Aug 2013]

### Product images:



Circular map for RG236889