

Product datasheet for **RG236881**

ZCCHC17 (NM_001282567) Human Tagged ORF Clone

Product data:

Product Type:	Expression Plasmids
Product Name:	ZCCHC17 (NM_001282567) Human Tagged ORF Clone
Tag:	TurboGFP
Symbol:	ZCCHC17
Synonyms:	HSPC251; pNO40; PS1D
Mammalian Cell Selection:	Neomycin
Vector:	pCMV6-AC-GFP (PS100010)
E. coli Selection:	Ampicillin (100 ug/mL)
ORF Nucleotide Sequence:	>RG236881 representing NM_001282567. Blue=ORF Red=Cloning site Green=Tag(s)

```
GCTCGTTTAGTGAACCGTCAGAATTTGTAAATACGACTCACTATAGGGCGGCCGGGAATTCGTCGACTG
GATCCGGTACCGAGGAGATCTGCCGCCGCGATCGCC
ATGGTGACAGACTATGGGGCCTTTATCAAAATCCAGGCTGTCGGAAGCAAGGTCTGGTCCATCGAACT
CATATGTCATCCTGTCGGGTGGATAAGCCCTCTGAGATAGTAGATGTTGGAGATAAAGTGTGGGTGAAG
CTTATTGGCCGAGAGATGAAAAATGATAGAATAAAAGTATCCCTCTCCATGAAGTTGTCAATCAAGGG
ACTGGGAAAGACCTTGATCCCAACAATGTTATCATTGAGCAAGAAGAGAGGGCGGAGGCGATCCTTCCAG
GATTACACTGGGCAGAAGATCACCTTGAGGCTGTCTTGAACACTACCTGCAAGAAGTGTGGCTGTAAA
GGTAGGGTGAAGCCTCTGCCCTTCCACGTTTCTCTCCTTGTGGATGGACCTTTTCTGGAAGAAGGAG
GCAGCCAGTGCCACTTTGCAAAAGATTGTTTCATGCAACCAGGTGGGACTAAATACTCTCTGATACCT
GATGAGGAAGAGGAAAAGGAAGAGGCAAAAGTCAGCAGAGTTTGAGAAGCCTGACCCTACAAGGAATCCT
TCTAGAAAAAGAAAGAAGGAGAAGAAGAAAAAGAAACATAGAGATAGGAAGTCATCTGACTCTGACAGC
TCAGACTCTGAGAGTGATACAGGCAAGAGGGCAAGGCACACATCAAAAGACAGCAAGGCAGCAAAGAAAG
AAGAAAAAGAAGAAGAAGCACAAGAAGAAGCACAAGGAG
ACGCGTACGCGGCCGCTCGAG - GFP Tag - GTTTAAAC
```



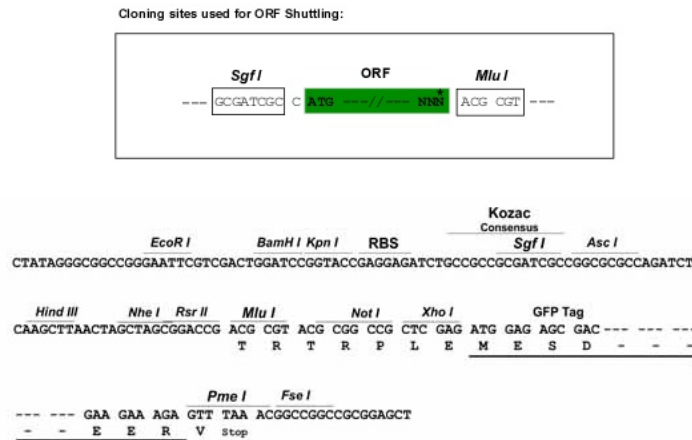
[View online »](#)

Protein Sequence: >Peptide sequence encoded by RG236881
Blue=ORF Red=Cloning site Green=Tag(s)

MVTDYGAFIKIPGCRKQGLVHRTHMSSCRVDPKSEIVDVGDKVWVKLIGREMKNDRIVKLSLSMKVVNQG
 TGKDLDPNNVIEQEERRRRSFQDYTGQKITLEAVLNTTCKKCGCKGRVKPLPFPFRFSPCGWTLFWKKE
 AAQCHF AKDCFMQPGGTYSLIPDEEEEEKEEAKSAEFEKPDPTRNPSRKRRKEKKKKKHRDRKSSDSDS
 SDSESDTGKRARHTSKDSKAAKKKKKKKKHKKKHKE
TRTRPLEMESDESGLPAMEIECRITGTLNGVEFELVGGEGTPEQGRMTNKMSTKGALTFSPYLLSHV
 MGYGFYHFGTYPSGYENPFLHAINNGGYTNTRIEKYEDGGVLHVSFSYRYEAGRVIGDFKVMGTGFPEP
 SVIFTDKIIRSNAIVEHLHPMGDNDLDGSFTRTFSLRDGGYSSVVD SHMHFKSAIHPSILQNGGPMFA
 FRRVEEDHSNTELGIVEYQHAFKTPDADAGEERV

Restriction Sites: SgfI-MluI

Cloning Scheme:



ACCN: NM_001282567

ORF Size: 729 bp

OTI Disclaimer: The molecular sequence of this clone aligns with the gene accession number as a point of reference only. However, individual transcript sequences of the same gene can differ through naturally occurring variations (e.g. polymorphisms), each with its own valid existence. This clone is substantially in agreement with the reference, but a complete review of all prevailing variants is recommended prior to use. [More info](#)

OTI Annotation: This clone was engineered to express the complete ORF with an expression tag. Expression varies depending on the nature of the gene.

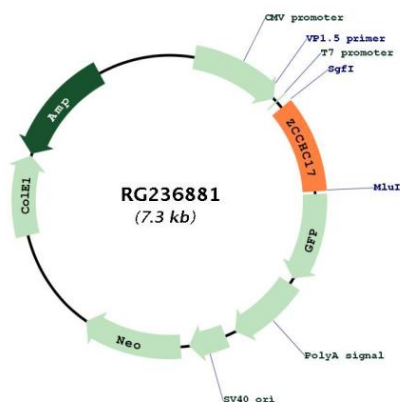
Components: The ORF clone is ion-exchange column purified and shipped in a 2D barcoded Matrix tube containing 10ug of transfection-ready, dried plasmid DNA (reconstitute with 100 ul of water).

RefSeq: [NM_001282567.1](#), [NP_001269496.1](#)

RefSeq Size: 1592 bp

RefSeq ORF: 732 bp

Locus ID: 51538
 UniProt ID: [Q9NP64](#)
 Cytogenetics: 1p35.2
 MW: 28.4 kDa

Product images:


Circular map for RG236881