

## Product datasheet for **RG236876**

### ERCC8 (NM\_001290285) Human Tagged ORF Clone

#### Product data:

Product Type:	Expression Plasmids
Product Name:	ERCC8 (NM_001290285) Human Tagged ORF Clone
Tag:	TurboGFP
Symbol:	ERCC8
Synonyms:	CKN1; CSA; UVSS2
Mammalian Cell Selection:	Neomycin
Vector:	pCMV6-AC-GFP (PS100010)
E. coli Selection:	Ampicillin (100 ug/mL)
ORF Nucleotide Sequence:	>RG236876 representing NM_001290285. Blue=ORF Red=Cloning site Green=Tag(s)

```
GCTCGTTTAGTGAACCGTCAGAATTTTGTAAACGACTCACTATAGGGCGCCGGGAATTCGTCGACTG
GATCCGGTACCGAGGAGATCTGCCGCCGCGATCGCC
ATGGGATACAAATACATTACAATTGGTACTAGAGGACCCAAAGTACAACTTTGTGACTTGAAGTCTGGA
TCCTGTTCTCACATTCTACAGGGTCACAGACAAGAAATATTAGCAGTTTCCTGGTCTCCACGTTATGAC
TATATCTTGGCAACAGCAAGTGCTGACAGTAGAGTAAAATTATGGGATGTGAGAAGAGCATCAGGATGT
TTGATTACTCTTGATCAACATAATGGGAAAAAGTCACAAGCTGTTGAATCAGCAAACACTGCTCATAAT
GGGAAAGTTAATGGCTTATGTTTTACAAGTGATGGACTTCACCTCCTCACTGTTGGTACAGATAATCGA
ATGAGGCTCTGGAATAGTTCCAATGGAGAAAACACACTTGTGAACATGGAAGTTTGTAAACAGT
AAAAAAGGATTGAAATCACTGTCTCCTGTGGCTGCAGTTCAGAAATTTGTTTTGTACCATATGGTAGC
ACCATTGCTGTTTATACAGTTTACTCAGGAGAACAGATAACTATGCTTAAGGGACATTATAAACTGTT
GACTGCTGTGATTTTCACTCAAATTTCCAGGAACTTTATAGTGGTAGCAGAGACTGCAACATTCTGGCT
TGGGTTCCATCCTTATATGAACCACTTCTGATGATGATGAGACTACAACAAAATCACAATTAATCCG
GCCTTTGAAGATGCCTGGAGCAGCAGTGATGAAGAAGGA
ACGCGTACGCGGCCGCTCGAG - GFP Tag - GTTTAAAC
```



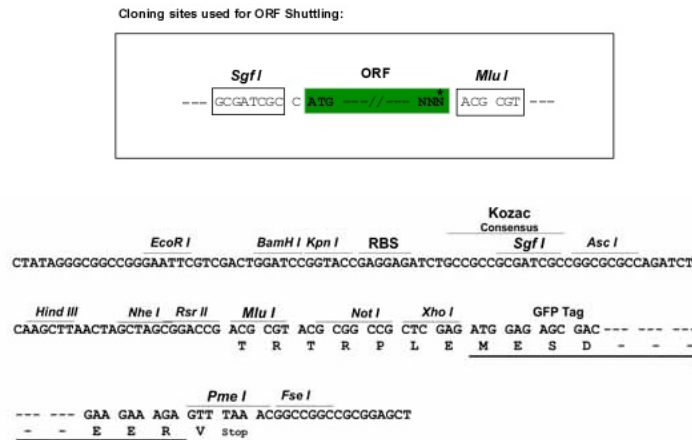
[View online »](#)

**Protein Sequence:** >Peptide sequence encoded by RG236876  
 Blue=ORF Red=Cloning site Green=Tag(s)

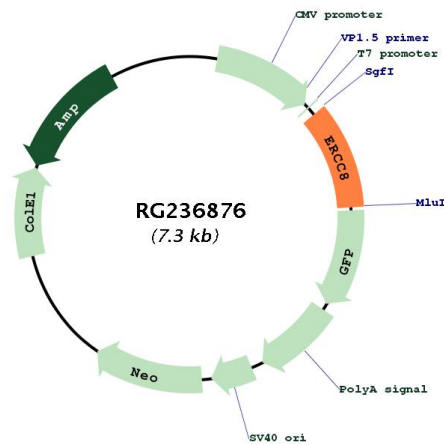
MGYKYITIGTRGPKVQLCDLKSGSCSHILQGHRQEILAVSWSPRDYILATASADSRVKLWDVRRASGC  
 LITLDQHNGKKSQAVESANTAHNGKVNLGFTSDGLHLLTVGTDNRMLWNSSNGENTLVNYGKVCNNS  
 KKGLKFTVSCGCSSEFVFPYGSTIAVYTVYSGEQITMLKGHYKTVDCCVFQSNFQELYSGRDCNILA  
 WVPSLYEPVPDDDETTTKSQLNPAFEDAWSSSDEEG  
 TRTRPLEMESDESGLPAMEIECRITGTLNGVEFELVGGEGTPEQGRMTNKMSTKGALTFSPYLLSHV  
 MGYGFYHFGTYPSGYENPFLHAINNGGYTNTRIEKYEDGGVLHVSFSYRYEAGRVIGDFKVMGTGFPED  
 SVIFTDKIIRSNAIVEHLHPMGDNDLDGSFTRTFSLRDGGYSSVVD SHMHFKSAIHPSILQNGGPMFA  
 FRRVEEDHSNTELGIVEYQHAFKTPDADAGEERV

**Restriction Sites:** SgfI-MluI

**Cloning Scheme:**



**Plasmid Map:**



**ACCN:** NM\_001290285

<b>ORF Size:</b>	729 bp
<b>OTI Disclaimer:</b>	The molecular sequence of this clone aligns with the gene accession number as a point of reference only. However, individual transcript sequences of the same gene can differ through naturally occurring variations (e.g. polymorphisms), each with its own valid existence. This clone is substantially in agreement with the reference, but a complete review of all prevailing variants is recommended prior to use. <a href="#">More info</a>
<b>OTI Annotation:</b>	This clone was engineered to express the complete ORF with an expression tag. Expression varies depending on the nature of the gene.
<b>Components:</b>	The ORF clone is ion-exchange column purified and shipped in a 2D barcoded Matrix tube containing 10ug of transfection-ready, dried plasmid DNA (reconstitute with 100 ul of water).
<b>RefSeq:</b>	<a href="#">NM_001290285.1</a> , <a href="#">NP_001277214.1</a>
<b>RefSeq Size:</b>	1962 bp
<b>RefSeq ORF:</b>	732 bp
<b>Locus ID:</b>	1161
<b>Cytogenetics:</b>	5q12.1
<b>Protein Families:</b>	Druggable Genome, Transcription Factors
<b>Protein Pathways:</b>	Nucleotide excision repair, Ubiquitin mediated proteolysis
<b>MW:</b>	27.3 kDa
<b>Gene Summary:</b>	This gene encodes a WD repeat protein, which interacts with Cockayne syndrome type B (CSB) protein and with p44 protein, a subunit of the RNA polymerase II transcription factor IIH. Mutations in this gene have been identified in patients with hereditary disease Cockayne syndrome (CS). CS cells are abnormally sensitive to ultraviolet radiation and are defective in the repair of transcriptionally active genes. Several transcript variants encoding different isoforms have been found for this gene. [provided by RefSeq, Mar 2014]