

Product datasheet for **RG236869**

BCL7C (NM_001286526) Human Tagged ORF Clone

Product data:

Product Type: Expression Plasmids
Product Name: BCL7C (NM_001286526) Human Tagged ORF Clone
Tag: TurboGFP
Symbol: BCL7C
Mammalian Cell Selection: Neomycin
Vector: pCMV6-AC-GFP (PS100010)
E. coli Selection: Ampicillin (100 ug/mL)
ORF Nucleotide Sequence: >RG236869 representing NM_001286526.
Blue=ORF Red=Cloning site Green=Tag(s)

```
GCTCGTTTAGTGAACCGTCAGAATTTTGTAAACGACTCACTATAGGGCGCCGGGAATTCGTCGACTG
GATCCGGTACCGAGGAGATCTGCCGCCGCGATCGCC
ATGGCCGGCCGGACTGTACGGGCCGAGACCCGGAGCCGGGCCAAGGATGACATCAAGAAGGTGATGGCG
ACCATCGAGAAGGTCCGGAGATGGGAGAAGCGATGGGTGACTGTGGGCGACACTTCCCTTCGTATCTTC
AAGTGGGTGCCAGTGGTGGATCCCCAGGAGGAGAGCGAAGGCCGGCAGGTGGCGGGCAGAGAGATCC
CGTGGCCGGGAACGTCGGGGCAGGGGCCAGTCCCCGAGGGGTGGCCCTCTCATCCTGCTGGATCTT
AATGATGAGAACAGCAACCAGAGTTTCCATTCCGAAGGTTCCCTGCAAAAGGGCAGAGCCAGTCCCT
GGGGCACCCCCAGCCAGCCCTGTGTACCTGCCGACCCAGAAAGGGTCCCTGAGGAGGCT
CAGCCCCACGGCTGGGCCAAGAGAGAGATCCCCGGGGCATAACTGCTGGCAGCACCCAGCAACCCCA
ATGCTGACCAAGGAGGAGCCTGTTCCAGAAGTCTGGAAGCTGAGGATTCGGGAGTGAGAATGACGAGG
AGAGCCCTTACGAGAAGGGGCTGAAGACAGAGCCCTCAGGAGGCTCCTGCCAGGAGGGGCTCCGG
ACAAATGTCCGGCCAGTTCATGGCGGTGCCGGACACCAGAGCTCCCGGGGAGGCAGCAAGGCCCCG
AGGGCACCCAGAACAATCCCCAGGTAAGGGGAGG
ACGCGTACGCGGCCGCTCGAG - GFP Tag - GTTTAAAC
```

Protein Sequence: >Peptide sequence encoded by RG236869
Blue=ORF Red=Cloning site Green=Tag(s)

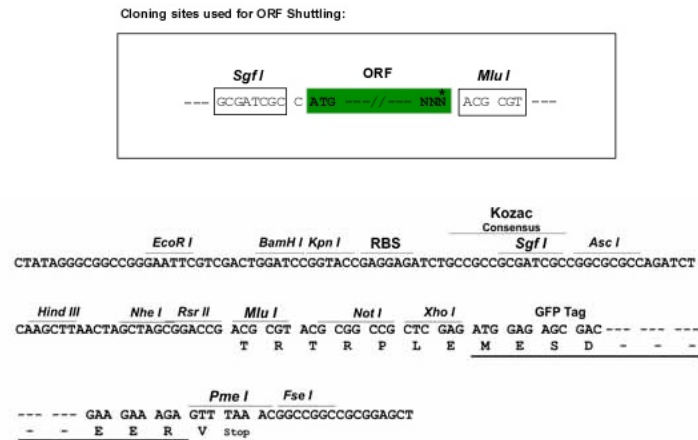
```
MAGRTVRAETRSRAKDDIKVMATIEKVRWKRWVTVGDTSLRIFKWVPVDPQEEERRRAGGGAERS
RGRERRRGASPRGGGLILLDLNDENSQSFHSEGLQKGTSPGGTPQPSRPVSPAGPEGVPEEA
QPPRLGQERDPGGITAGSTDEPPMLTKEEPVPELLEAEDSGVRMTRRALHEKGLKTEPLRLLPRGLR
TNVRPSSMAVPDTRAPGGGSKAPRAPRTIPQGKGR
TRTRPLEMESDESGLPAMEIECRITGTLNGVEFELVGGEGTPEQGRMTNKMSTKGALTFSPYLLSHV
MGYGFYHFGTYPSGYENPFLHAINNGGYTNRIEKYEDGGVLHVSFSYRYEAGRVIGDFKVMGTGFPE
SVIFTDKIIRSNAIVEHLHPMGDNDLDGSFTRTFSLRDGGYSSVVDSHMHFKSAIHPSILQNGGPMFA
FRRVEEDHSNTELGIVEYQHAFKTPDADAGEERY
```



[View online >](#)

Restriction Sites: SgfI-MluI

Cloning Scheme:



ACCN: NM_001286526

ORF Size: 726 bp

OTI Disclaimer: The molecular sequence of this clone aligns with the gene accession number as a point of reference only. However, individual transcript sequences of the same gene can differ through naturally occurring variations (e.g. polymorphisms), each with its own valid existence. This clone is substantially in agreement with the reference, but a complete review of all prevailing variants is recommended prior to use. [More info](#)

OTI Annotation: This clone was engineered to express the complete ORF with an expression tag. Expression varies depending on the nature of the gene.

Components: The ORF clone is ion-exchange column purified and shipped in a 2D barcoded Matrix tube containing 10ug of transfection-ready, dried plasmid DNA (reconstitute with 100 ul of water).

RefSeq: [NM_001286526.2](#)

RefSeq Size: 1998 bp

RefSeq ORF: 729 bp

Locus ID: 9274

UniProt ID: [Q8WUZ0](#)

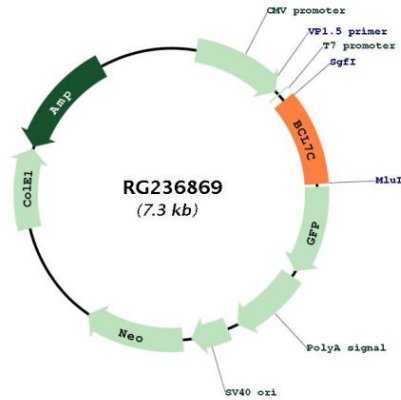
Cytogenetics: 16p11.2

MW: 26.9 kDa

Gene Summary:

This gene is identified by the similarity of its product to the N-terminal region of BCL7A protein. The BCL7A protein is encoded by the gene known to be directly involved in a three-way gene translocation in a Burkitt lymphoma cell line. The function of this gene has not yet been determined. Two transcript variants encoding different isoforms have been found for this gene. [provided by RefSeq, Nov 2013]

Product images:



Circular map for RG236869