

Product datasheet for **RG236857**

CLIC1 (NM_001287594) Human Tagged ORF Clone

Product data:

Product Type:	Expression Plasmids
Product Name:	CLIC1 (NM_001287594) Human Tagged ORF Clone
Tag:	TurboGFP
Symbol:	CLIC1
Synonyms:	CL1C1; CLCNL1; G6; NCC27
Mammalian Cell Selection:	Neomycin
Vector:	pCMV6-AC-GFP (PS100010)
E. coli Selection:	Ampicillin (100 ug/mL)
ORF Nucleotide Sequence:	>RG236857 representing NM_001287594. Blue=ORF Red=Cloning site Green=Tag(s)

```
GCTCGTTTAGTGAACCGTCAGAATTTTGTAAACGACTCACTATAGGGCGGCCGGGAATTCGTCGACTG
GATCCGGTACCGAGGAGATCTGCCGCCGCGATCGCC
ATGGCTGAAGAACAACCGCAGGTCGAATTGTTTCGTGAAGGCTGGCAGTGATGGGGCCAAGATTGGGAAC
TGCCCATCTCCAGAGACTGTTTCATGGTACTGTGGCTCAAGGGAGTCACCTTCAATGTTACCACCGTT
GACACAAAAGGCGGACCGAGACAGTGCAGAAGCTGTGCCAGGGGGCAGCTCCCATCTCTGCTGTAT
GGCACTGAAGTGCACACAGACACCAACAAGATTGAGGAATTTCTGGAGGCAGTGTGTGCCCTCCAGG
TACCCCAAGCTGGCAGCTCTGAACCTGAGTCCAACACAGCTGGGCTGGACATATTTGCCAAATTTTCT
GCCTACATCAAGAATTCAAACCCAGCACTCAATGACAATCTGGAGAAGGGACTCCTGAAAGCCCTGAAG
GTTTTAGACAATTAACATCCCCCTCCAGAAAGTGGATGAAACCAAGTGTGAAGATGAAGGT
GTCTCTCAGAGGAAGTTTTGGATGGCAACGAGCTCACCTGGCTGACTGCAACCTGTTGCCAAAGTTA
CACATAGTACAGGTGGTGTGAAGAAGTACCGGGATTACCATCCCCGAGGCCCTCCGGGGAGTGCAT
CGGTACTTGAGCAATGCCTACGCCCGGGAAGAATTCGTTCCACCTGTCCAGATGATGAGGAGATCGAG
CTCGCCTATGAGCAAGTGGCAAAGGCCCTCAA
ACGCGTACGCGGCCGCTCGAG - GFP Tag - GTTAAAC
```



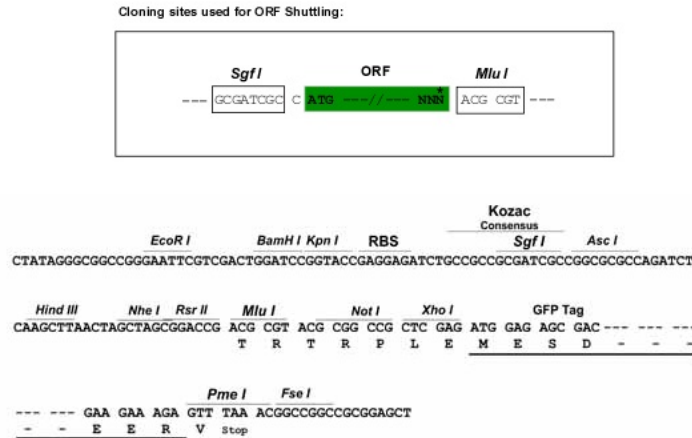
[View online »](#)

Protein Sequence: >Peptide sequence encoded by RG236857
 Blue=ORF Red=Cloning site Green=Tag(s)

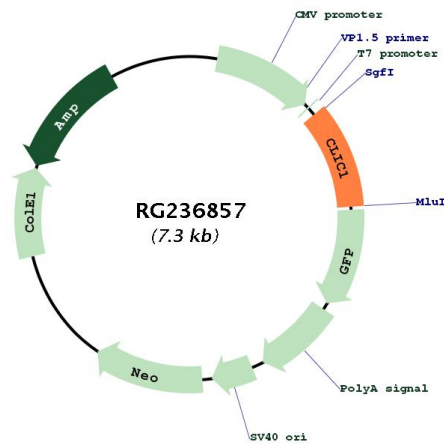
MAEEQPQVELFVKAGSDGAKIGNCPFSQRLFVLWLVKGVTFNVTVDTKRRRETETVQKLCPPGGQLPFLLY
 GTEVHTDNKIEEFLEAVLCPFRYPKLAALNPESNTAGLDIFAKFSAYIKNSPALNDNLEKGLLKALK
 VLDNYLTSPLPEEVDETSAEDEGVSRKFLDGNELTLADCNLLPKLHIVQVVCKYRGTIPEAFRGVH
 RYLSNAYAREEFASCPDDEEIELAYEQVAKALK
 TRTRPLEMESDESGLPAMEIECRITGTLNGVEFELVGGGEGTPEQGRMTNKMSTKGALTFSPYLLSHV
 MGYGFYHFGTYPSTYENPFLHAINNGGYTNTRIEKYEDGGVLHVSFSYRYEAGRVIGDFKVMGTGFPED
 SVIFTDKIIRSNAIVEHLHPMGDNDLDGSFTRTFSLRDGGYSSVVDSTMHFKSAIHPSILQNGGPMFA
 FRRVEEDHSNTELGIVEYQHAFKTPDADAGEERV

Restriction Sites: SgfI-MluI

Cloning Scheme:



Plasmid Map:



ACCN: NM_001287594

ORF Size:	723 bp
OTI Disclaimer:	The molecular sequence of this clone aligns with the gene accession number as a point of reference only. However, individual transcript sequences of the same gene can differ through naturally occurring variations (e.g. polymorphisms), each with its own valid existence. This clone is substantially in agreement with the reference, but a complete review of all prevailing variants is recommended prior to use. More info
OTI Annotation:	This clone was engineered to express the complete ORF with an expression tag. Expression varies depending on the nature of the gene.
Components:	The ORF clone is ion-exchange column purified and shipped in a 2D barcoded Matrix tube containing 10ug of transfection-ready, dried plasmid DNA (reconstitute with 100 ul of water).
RefSeq:	NM_001287594.1 , NP_001274523.1
RefSeq Size:	1111 bp
RefSeq ORF:	726 bp
Locus ID:	1192
UniProt ID:	O00299
Cytogenetics:	6p21.33
Protein Families:	Druggable Genome, Ion Channels: Other
MW:	26.9 kDa
Gene Summary:	Chloride channels are a diverse group of proteins that regulate fundamental cellular processes including stabilization of cell membrane potential, transepithelial transport, maintenance of intracellular pH, and regulation of cell volume. Chloride intracellular channel 1 is a member of the p64 family; the protein localizes principally to the cell nucleus and exhibits both nuclear and plasma membrane chloride ion channel activity. [provided by RefSeq, Jul 2008]