

Product datasheet for **RG236855**

ZCCHC17 (NM_001282568) Human Tagged ORF Clone

Product data:

Product Type:	Expression Plasmids
Product Name:	ZCCHC17 (NM_001282568) Human Tagged ORF Clone
Tag:	TurboGFP
Symbol:	ZCCHC17
Synonyms:	HSPC251; pNO40; PS1D
Mammalian Cell Selection:	Neomycin
Vector:	pCMV6-AC-GFP (PS100010)
E. coli Selection:	Ampicillin (100 ug/mL)
ORF Nucleotide Sequence:	>RG236855 representing NM_001282568. Blue=ORF Red=Cloning site Green=Tag(s)

```
GCTCGTTTAGTGAACCGTCAGAATTTGTAAATACGACTCACTATAGGGCGCCGGGAATTCGTCGACTG
GATCCGGTACCGAGGAGATCTGCCGCCGCGATCGCC
ATGAATTCAGGAAGGCCTGAGACCATGGAAACTTGCCTGCTCTACACTATTTTCCAAGGAGAGGTT
GCTATGGTGACAGACTATGGGCCTTTATCAAAATCCCAGGCTGTCGGAAGCAAGGTCTGGTCCATCGA
ACTCATATGTCATCCTGTCGGGTGGATAAGCCCTCTGAGATAGTAGATGTTGGAGATAAAGTGTGGGTG
AAGCTTATTGGCCGAGAGATGAAAATGATAGAATAAAAGTATCCCTCTCCATGAAGTTGTCAATCAA
GGGACTGGGAAAGACCTTGATCCCAACAATGTTATCATTGAGCAAGAAGAGAGCGGAGGCGATCCCTC
CAGGATTACACTGGGCAGAAGATCACCCCTTGAGGCTGTCTTGAACACTACCTGCAAGAAGTGTGGCTGT
AAAGGCCACTTTGCAAAAGATTGTTTCATGCAACCAGGTGGGACTAAACTCTCTGATACCTGATGAG
GAAGAGGAAAAGGAGGAAAGGCAAAAGTCAGCAGAGTTTGAGAAGCCTGACCCACAAGGAATCCTTCTAGA
AAAAGAAAAGGAGAAGAAGAAAAGAAAACATAGAGATAGGAAGTCATCTGACTCTGACAGCTCAGAC
TCTGAGAGTGATACAGGCAAGAGGGCAAGGCACACATCAAAGACAGCAAGGCAGCAAAGAAGAAGAAA
AAGAAGAAGAAGCACAAGAAGAAGCACAAGGAG
ACGCGTACGCGGCCGCTCGAG - GFP Tag - GTTAAAC
```



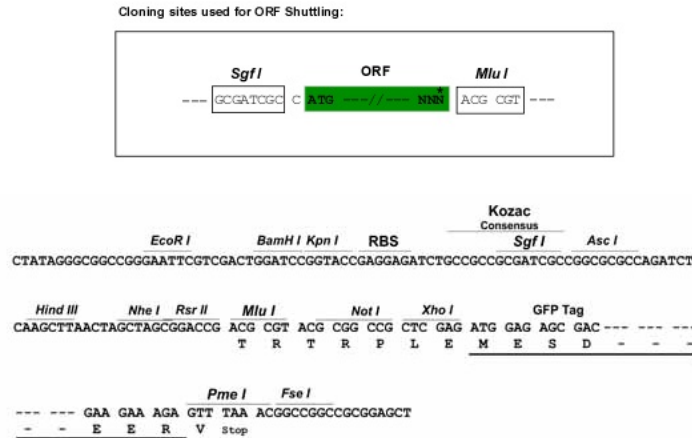
[View online »](#)

Protein Sequence: >Peptide sequence encoded by RG236855
 Blue=ORF Red=Cloning site Green=Tag(s)

MNSGRPETMENLPALYTIHQGEVAMVTDYGAFIKIPGCRKQGLVHRTHMSSCRVDPSEIVDVGDKVWV
 KLIGREMKNDRIVKLSMKVVNQGTGKDLDPNNVIEQEERRRRSFQDYTGQKITLEAVLNTTCKKCGC
 KGHFAKDCFMQPGGTYKSLIPDEEEEEKAAEFKPDPTRNPSRKRKKEKKKKKHRDRKSSDSDSSD
 SESDTGKRARHTSKDKAAAKKKKKKKHKKHKE
 TRTRPLEMESDESGLPAMEIECRITGTLNGVEFELVGGEGTPEQGRMTNKMSTKGALTFSPYLLSHV
 MGYGFYHFGTYPSGYENPFLHAINNGGYTNTRIEKYEDGGVLHVSFSYRYEAGRVIGDFKVMGTGFPE
 SVIFTDKIIRSNAIVEHLHPMGDNDLDGSFTRTFSLRDGGYSSVVD SHMHFKSAIHPSILQNGGPMFA
 FRRVEEDHSNTELGIVEYQHAFKTPDADAGEERV

Restriction Sites: SgfI-MluI

Cloning Scheme:



ACCN: NM_001282568

ORF Size: 723 bp

OTI Disclaimer: The molecular sequence of this clone aligns with the gene accession number as a point of reference only. However, individual transcript sequences of the same gene can differ through naturally occurring variations (e.g. polymorphisms), each with its own valid existence. This clone is substantially in agreement with the reference, but a complete review of all prevailing variants is recommended prior to use. [More info](#)

OTI Annotation: This clone was engineered to express the complete ORF with an expression tag. Expression varies depending on the nature of the gene.

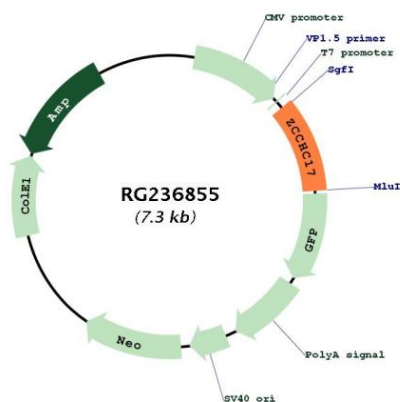
Components: The ORF clone is ion-exchange column purified and shipped in a 2D barcoded Matrix tube containing 10ug of transfection-ready, dried plasmid DNA (reconstitute with 100 ul of water).

RefSeq: [NM_001282568.1](#), [NP_001269497.1](#)

RefSeq Size: 1773 bp

RefSeq ORF: 726 bp

Locus ID: 51538
 UniProt ID: [Q9NP64](#)
 Cytogenetics: 1p35.2
 MW: 27.6 kDa

Product images:


Circular map for RG236855