

Product datasheet for **RG236852**

C6orf89 (NM_001286636) Human Tagged ORF Clone

Product data:

Product Type:	Expression Plasmids
Product Name:	C6orf89 (NM_001286636) Human Tagged ORF Clone
Tag:	TurboGFP
Symbol:	C6orf89
Synonyms:	BRAP; PS1TP5TP1
Mammalian Cell Selection:	Neomycin
Vector:	pCMV6-AC-GFP (PS100010)
E. coli Selection:	Ampicillin (100 ug/mL)
ORF Nucleotide Sequence:	>RG236852 representing NM_001286636. Blue=ORF Red=Cloning site Green=Tag(s)

```
GCTCGTTTAGTGAACCGTCAGAATTTTGTAAACGACTCACTATAGGGCGGCCGGGAATTCGTCGACTG
GATCCGGTACCGAGGAGATCTGCCGCCGCGATCGCC
ATGTCCTTGCCATTGCCAAGAAGTACATGTCAGAAAATAAGGGAGTTCCTCTGCATGGGGGTGATGAA
GACAGACCCTTTCCAGACTTTGACCCCTGGTGGACAAACGACTGTGAGCAGAATGAGTCAGAGCCCAT
CCTGCCAACTGCACTGGCTGTGCCAGAAACACCTGAAGGTGATGCTCCTGGAAGACGCCCAAGGAAA
TTTGAGAGGCTCCATCCACTGGTATCAAGACGGGAAAGCCCTGTTGGAGGAAGAGATTCAGCATTTT
TTGTGCCAGTACCCTGAGGCGACAGAAGGCTTCTCTGAAGGGTTTTTCGCCAAGTGGTGGCCTGCTTT
CCTGAGCGGTGGTTCCCATTTTCTTATCCATGGAGGAGACCTCTGAACAGATCACAAATGTTACGTGAG
CTTTTTCTGTTTTCACTCACCTGCCATTTCCAAAAGATGCCTCTTTAAACAAGTCTCCTTTCTTAC
CCAGAACCTGTTGTGGGGAGTAAGATGCATAAGATGCCTGACCTATTTATCATTGGCAGCGGTGAGGCC
ATGTTGCAGCTCATCCCTCCCTCCAGTGCCGAAGACATTGTCAGTCTGTGGCCATGCCAATAGAGCCA
GGGGATATCGGCTATGTCGACACCACCCACTGGAAGGTCTACGTTATAGCCAGAGGGGTCCAGCCTTTG
GTCATCTGCGATGGAACCGCTTTCTCAGAACTG
ACGCGTACGCGGCCGCTCGAG - GFP Tag - GTTAAAC
```



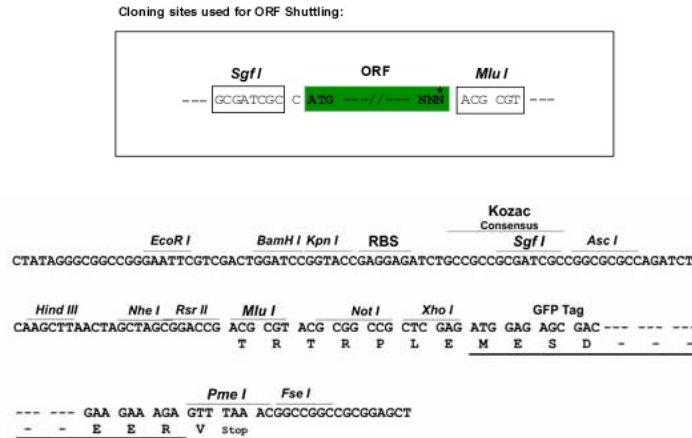
[View online »](#)

Protein Sequence: >Peptide sequence encoded by RG236852
 Blue=ORF Red=Cloning site Green=Tag(s)

MSLP
 IAKKY
 MSENK
 GVPLH
 GGD
 EDRP
 PPDF
 DPWWT
 NDCEQ
 NESE
 PIPAN
 CTGCA
 QKHL
 KVM
 LLED
 APRK
 FERL
 HPLV
 IKTG
 KPLLE
 EEEI
 QHFL
 CQYPE
 ATEGF
 SEGFF
 AKW
 WRCF
 PERW
 FPFY
 PWR
 RPLN
 RNSQ
 MLRE
 LFPV
 FTHL
 PPKD
 ASLN
 KCSF
 LHPE
 PVVGS
 KMHK
 MPDL
 FII
 GSGE
 AMLQ
 LIPF
 QCRR
 HCQS
 VAMP
 IEP
 GDIG
 YVD
 TTHW
 KYV
 VIAR
 GVQ
 PLVIC
 DGTAF
 SEL
 TRTR
 PLEM
 ESDE
 SGLP
 AMEIE
 CRIT
 GTLN
 GVEF
 ELV
 VGGG
 EGTPE
 QGRM
 TNK
 MKST
 KGAL
 TFS
 PYLL
 SHV
 MGYG
 FYHF
 GTYPS
 GYEN
 PFLH
 AINNG
 GYT
 NTRIE
 KYED
 GGV
 LHVS
 FSYR
 YEAG
 RVI
 GDFK
 VMGT
 GFPE
 DSVI
 FTDK
 IIRSN
 ATVE
 HLHP
 MGD
 NDL
 DGSF
 TRTF
 SLRD
 GGY
 SSVV
 DSHM
 HFKA
 SAIH
 PSIL
 QNGG
 PMFA
 FRRV
 EEDH
 SNT
 ELG
 IVEY
 QHAF
 KTPD
 ADAGE
 EERV

Restriction Sites: SgfI-MluI

Cloning Scheme:



ACCN: NM_001286636

ORF Size: 723 bp

OTI Disclaimer: The molecular sequence of this clone aligns with the gene accession number as a point of reference only. However, individual transcript sequences of the same gene can differ through naturally occurring variations (e.g. polymorphisms), each with its own valid existence. This clone is substantially in agreement with the reference, but a complete review of all prevailing variants is recommended prior to use. [More info](#)

OTI Annotation: This clone was engineered to express the complete ORF with an expression tag. Expression varies depending on the nature of the gene.

Components: The ORF clone is ion-exchange column purified and shipped in a 2D barcoded Matrix tube containing 10ug of transfection-ready, dried plasmid DNA (reconstitute with 100 ul of water).

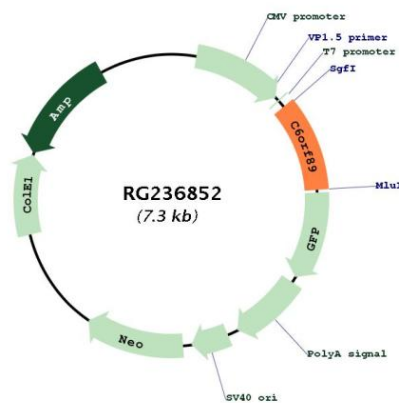
RefSeq: [NM_001286636.2](#)

RefSeq Size: 6931 bp

RefSeq ORF: 726 bp

Locus ID: 221477
UniProt ID: [Q6UWU4](#)
Cytogenetics: 6p21.2
Protein Families: Transmembrane
MW: 28.3 kDa
Gene Summary: Exhibits histone deacetylase (HDAC) enhancer properties (PubMed:23460338). May play a role in cell cycle progression and wound repair of bronchial epithelial cells (PubMed:21857995). [UniProtKB/Swiss-Prot Function]

Product images:



Circular map for RG236852