

Product datasheet for **RG236836**

CD300 (CD300LF) (NM_001289086) Human Tagged ORF Clone

Product data:

Product Type:	Expression Plasmids
Product Name:	CD300 (CD300LF) (NM_001289086) Human Tagged ORF Clone
Tag:	TurboGFP
Symbol:	CD300
Synonyms:	CD300f; CLM-1; CLM1; IgSF13; IREM-1; IREM1; LMIR3; NKIR
Mammalian Cell Selection:	Neomycin
Vector:	pCMV6-AC-GFP (PS100010)
E. coli Selection:	Ampicillin (100 ug/mL)
ORF Nucleotide Sequence:	>RG236836 representing NM_001289086. Blue=ORF Red=Cloning site Green=Tag(s)

```
GCTCGTTTAGTGAACCGTCAGAATTTTGTAAACGACTCACTATAGGGCGCCGGGAATTCGTCGACTG
GATCCGGTACCGAGGAGATCTGCCGCCGCGATCGCC
ATGTGGCTGCCTCAGCTCGACCTCATGAGGGTCATCAGTGCTAAGAGTCAAGGCTACTCCATTGTCACT
CAAATCACCGGTCCAACAACAGTGAATGGCTTGGAGCGGGGCTCCTTGACCGTGCAGTGTGTTTACAGA
TCAGGCTGGGAGACCTACTTGAAGTGGTGGTGTGAGGAGCTATTTGGCGTGACTGCAAGATCCTTGTT
AAAACCAGTGGGTGAGAGCAGGAGGTGAAGAGGGACCGGGTGTCCATCAAGGACAATCAGAAAAACCGC
ACGTTCACTGTGACCATGGAGGATCTCATGAAACTGATGCTGACTTACTGGTGTGGAATTGAGAAA
ACTGAAAATGACCTTGGGGTACAGTTCAGTGACCATGACCCAGCGTGCAGTCTGCCCCACCACG
CCTACCTCCACTACGTTTACAGCACAGTACCCAAGAAGAACTAGCAGCTCCCAACTCTGACCGGC
CACCACCTGGACAACAGGCACAAGCTCCTGAAGCTCAGTGTCTCCTGCCCCTCATCTTACCATATTG
CTGCTGCTTTTGGTGGCCGCTCACTCTTGGCTTGGAGGATGATGAAGTACCAGCAGAAAGGTAAGTCA
GCCCTGGAGGGCGACCTCTGCTATGCAGACCTGACCCTGCAGCTGGCCGGAACCTCCCCGAAAAGGC
TACCACGAAGCTTTCCTCTGCCAGGT
ACGCGTACGCGGCCGCTCGAG - GFP Tag - GTTAAAC
```



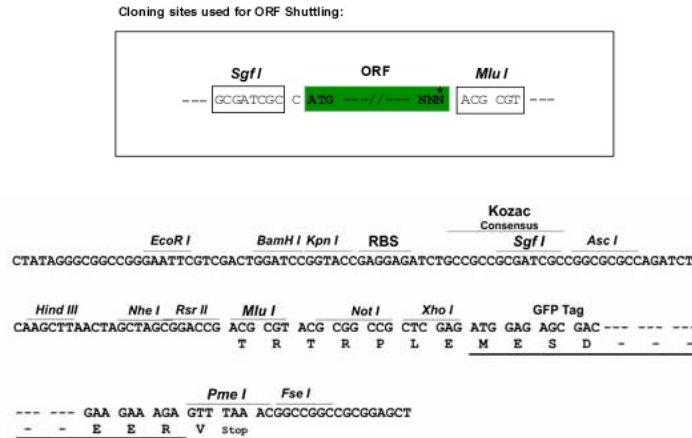
[View online »](#)

Protein Sequence: >Peptide sequence encoded by RG236836
 Blue=ORF Red=Cloning site Green=Tag(s)

MWLPQLDLMRVISAKSQGYSIVTQITGPTTVNGLERGLTVQCVRSGWETYLKWWCRGAIWRDCKILV
 KTSQSEQEVKRDVSIKDNQKNRFTVTMEDLMKTDADTYWCGIEKTGNDLGVTVQVITDPASTPAPTT
 PTSTFTTAPVTQEETSSSPTLTGHHLDRHKLKLSVLLPLIFTILLLLLVAASLLAWRMMKYQQKGTA
 APGGRPLLCRPDPAAGRNLPAGYHEAFLCPG
 TRTRPLEMESDESGLPAMEIECRITGTLNGVEFELVGGGEGTPEQGRMTNKMKSTKGALTFSPYLLSHV
 MGYGFYHFGTYPSGYENPFLHAINNGGYTNTRIEKYEDGGVLHVSFSYRYEAGRVIGDFKVMGTGFPED
 SVIFTDKIIRSNAIVEHLHPMGDNDLDGSFTRTFSLRDGGYSSVVDSHMHFKSAIHPSILQNGGPMFA
 FRRVEEDHSNTELGIVEYQHAFKTPDADAGEERV

Restriction Sites: SgfI-MluI

Cloning Scheme:



ACCN: NM_001289086

ORF Size: 717 bp

OTI Disclaimer: The molecular sequence of this clone aligns with the gene accession number as a point of reference only. However, individual transcript sequences of the same gene can differ through naturally occurring variations (e.g. polymorphisms), each with its own valid existence. This clone is substantially in agreement with the reference, but a complete review of all prevailing variants is recommended prior to use. [More info](#)

OTI Annotation: This clone was engineered to express the complete ORF with an expression tag. Expression varies depending on the nature of the gene.

Components: The ORF clone is ion-exchange column purified and shipped in a 2D barcoded Matrix tube containing 10ug of transfection-ready, dried plasmid DNA (reconstitute with 100 ul of water).

RefSeq: [NM_001289086.2](#)

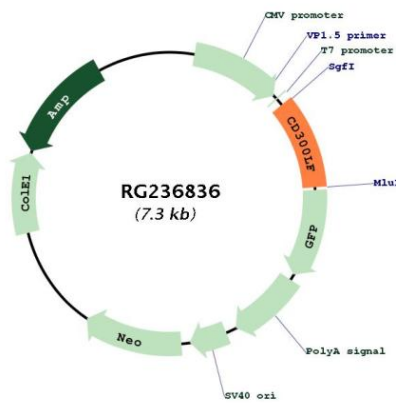
RefSeq Size: 2006 bp

RefSeq ORF: 720 bp

Locus ID: 146722
UniProt ID: [Q8TDQ1](#)
Cytogenetics: 17q25.1
Protein Families: Druggable Genome, Transmembrane
MW: 26.9 kDa

Gene Summary: This gene encodes a member of the CD300 protein family. Members of this family are cell surface glycoproteins with a single IgV-like extracellular domain, and are involved in the regulation of immune response. The encoded protein is an inhibitory receptor. Alternative splicing results in multiple transcript variants. [provided by RefSeq, Jan 2014]

Product images:



Circular map for RG236836